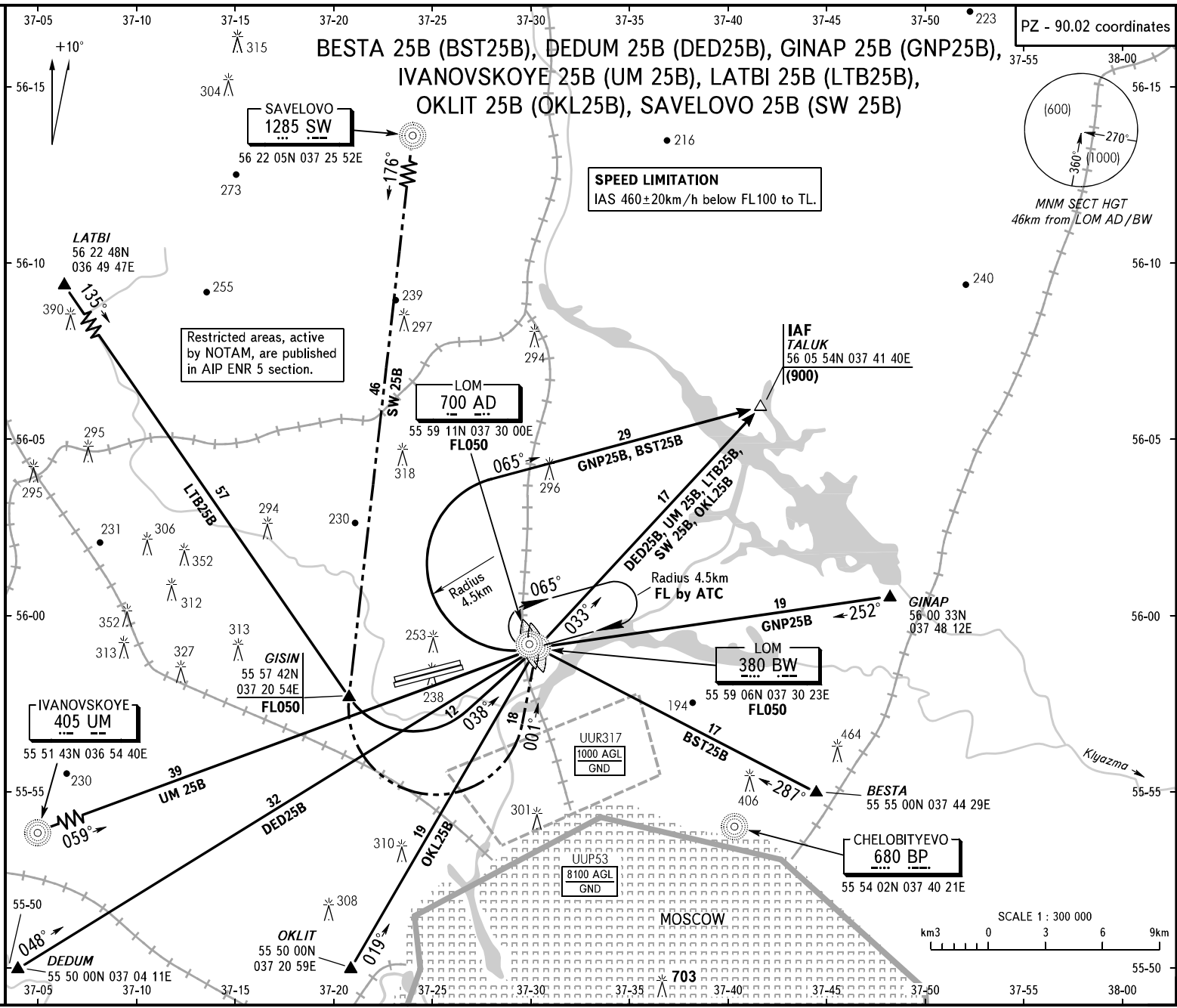


STANDARD ARRIVAL CHART
INSTRUMENT (STAR) - ICAO

TRANSITION
LEVEL: By ATC

MOSCOW, RUSSIA
SHEREMETYEVO
RWY 25L/25R

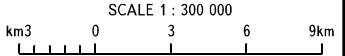
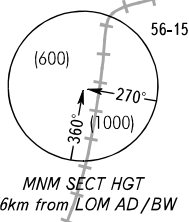


MOSCOW APPROACH
SHEREMETYEVO RADAR
See UUEE-56
118.100

WARNING
All crews shall execute noise abatement
procedures as in accordance with ICAO
Annex 16 and DOC 8168.

Restricted areas, active
by NOTAM, are published
in AIP ENR 5 section.

SPEED LIMITATION
IAS 460±20km/h below FL100 to TL.



BEARINGS AND TRACKS ARE MAGNETIC
ALTITUDES, HEIGHTS AND ELEVATIONS ARE IN METRES
DISTANCES ARE IN KILOMETRES

Federal Air Transport Agency

CHANGE: New chart