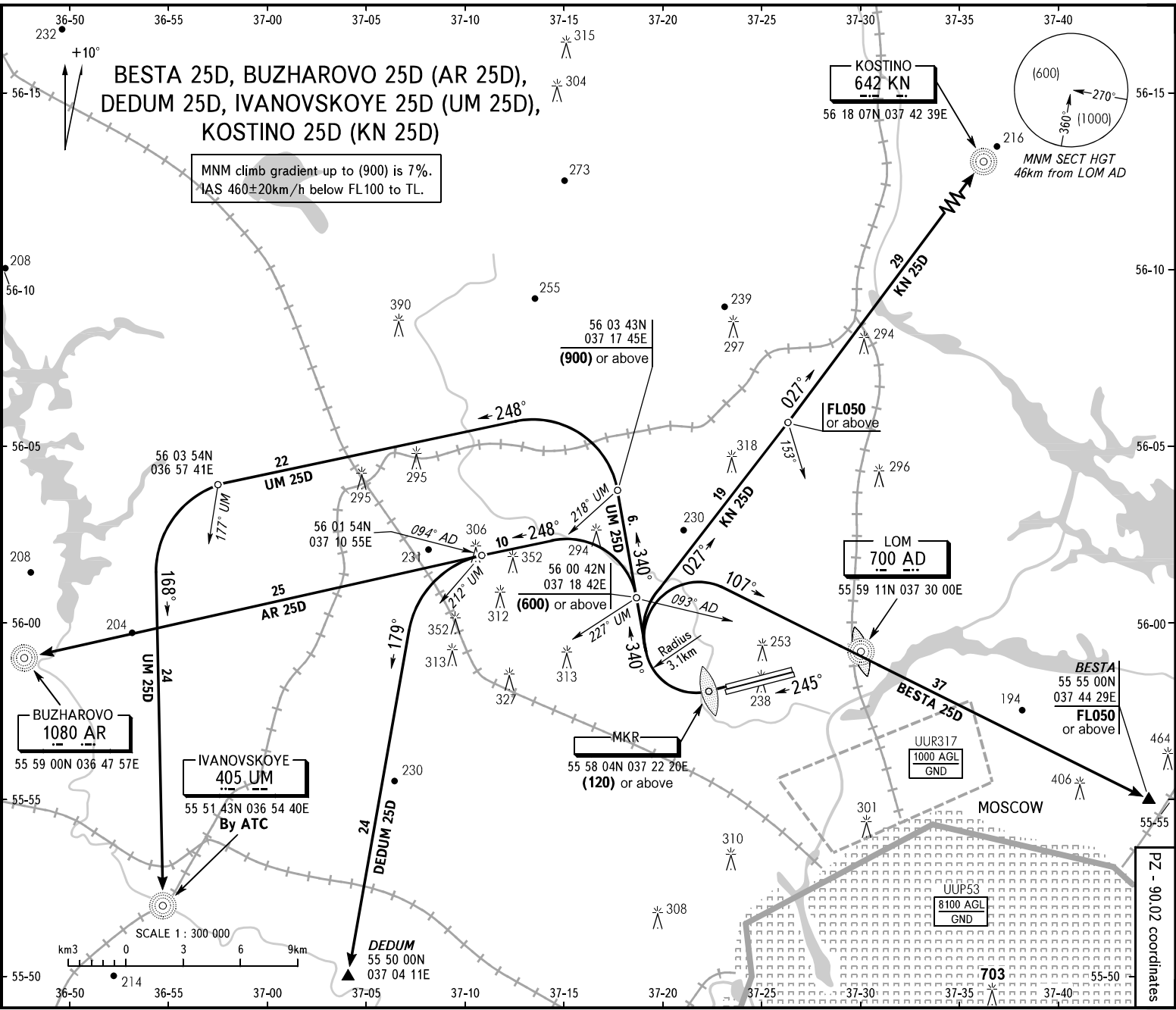


STANDARD DEPARTURE CHART
INSTRUMENT (SID) - ICAO

TRANSITION
HEIGHT : (1000)

MOSCOW, RUSSIA
SHEREMETYEVO
RWY 25R

PZ - 90.02 coordinates

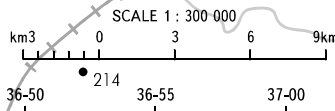


BESTA 25D, BUZHAROVO 25D (AR 25D),
DEDUM 25D, IVANOVSKOYE 25D (UM 25D),
KOSTINO 25D (KN 25D)

MNM climb gradient up to (900) is 7%.
IAS 460±20km/h below FL100 to TL.

SHEREMETYEVO TOWER RMY 07L/25R 131.500
RMY 07R/25L 120.700
RADAR 118.100
APPROACH See UUEE-55
MOSCOW

WARNING:
1. After climbing to (200) immediately contact Sheremetyevo-Radar on 118.100.
2. Initially cleared height of climb after take-off is (900) for all SID.
3. All crews shall execute noise abatement procedures as in accordance with ICAO Annex 16 and DOC 8168.



BEARINGS AND TRACKS ARE MAGNETIC
ALTITUDES, HEIGHTS AND ELEVATIONS ARE IN METRES
DISTANCES ARE IN KILOMETRES

CHANGE: FL, COM