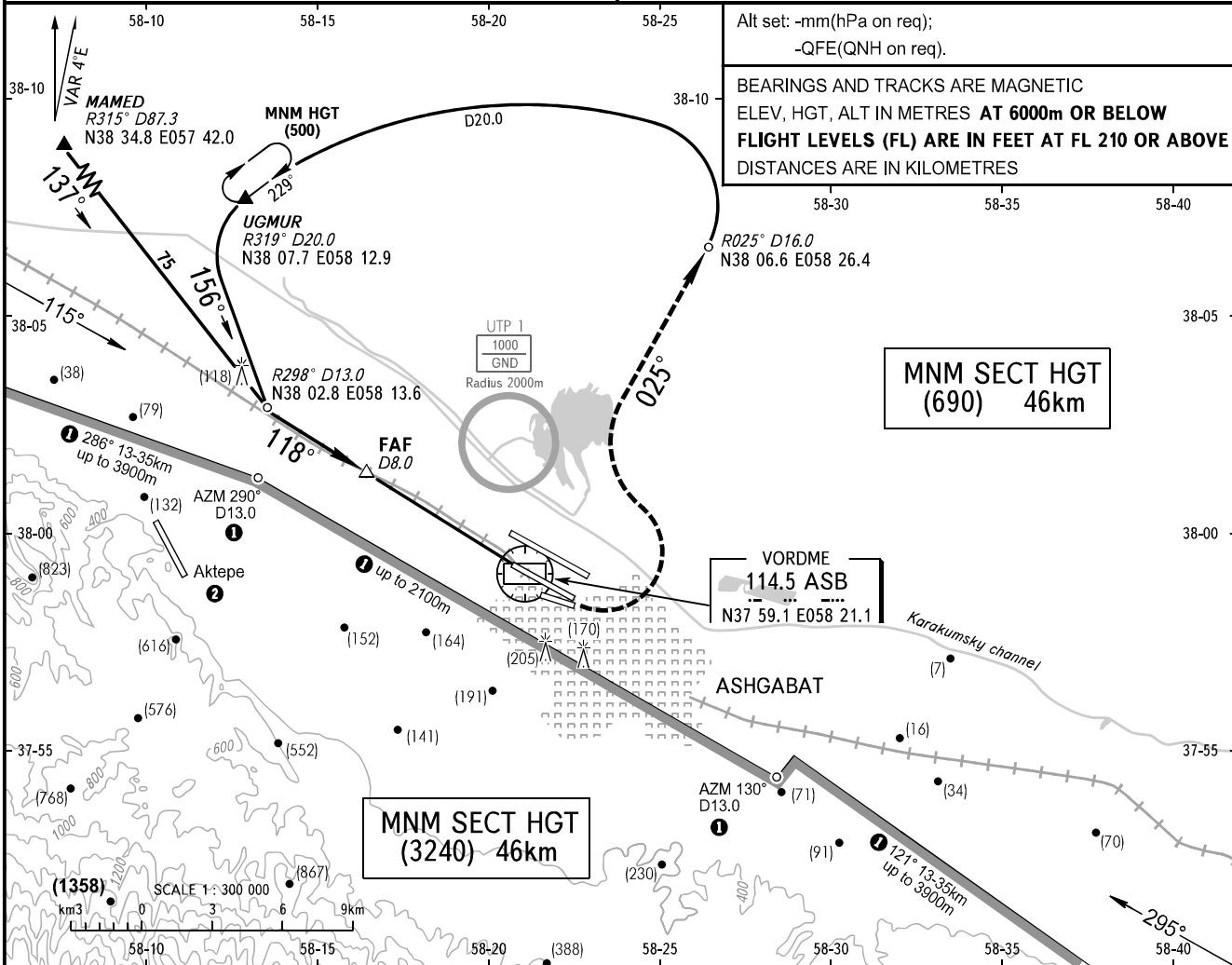


**INSTRUMENT  
APPROACH  
CHART - ICAO**

APPROACH **123.5**  
KRUG **118.7**  
START **120.0**

**ASHGABAT, TURKMENISTAN**  
ASHGABAT  
VORDME RWY 12R

TRANSITION LEVEL: 1500  
TRANSITION HEIGHT: (900)  
AD ELEV: **211.0m**  
THR ELEV: **210.0m**

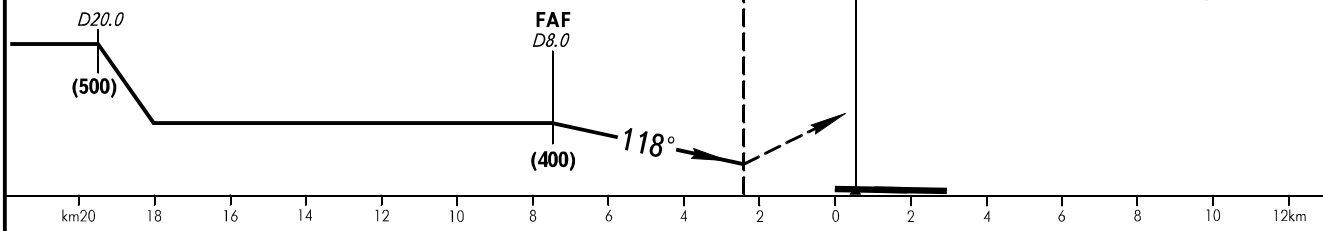


**MNM SECT HGT  
(690) 46km**

**MNM SECT HGT  
(3240) 46km**

ASB DME	HEIGHT
7.0	(350)
6.0	(300)
4.5	(220)
3.0	(140)

**MISSED APPROACH**  
Climb on track 118° to VORDME (300), but not closer than VORDME, turn LEFT to intercept R025° ASB and proceed to join D20.0 ASB arc or as directed by ATC.



OCA/H		A	B	C	D
Straight-in	Approach				
	VORDME	334(124)	334(124)	334(124)	334(124)

① Limiting bearing from geo point N37 58.9 E058 21.6.  
② Attention to the crew! There is Aktepe aerodrome 16km West of ASHGABAT aerodrome, RWY 148°/328°, 2640mX44m.  
TRANSITION LEVEL:  
- 1500 when atmospheric pressure is 733mm mercury column or above;  
- 1800 when atmospheric pressure is less than 733mm mercury column.  
**WARNING**  
When approaching one can see railway lights similar to RWY lights at 100m right of LOM.

GROUND SPEED	km/h	150	180	210	240	270	300	330	360	390	420	450
FAF-THR 7400m	min:s	2.58	2.28	2.07	1.52	1.39	1.29	1.21	1.14	1.08	1.04	0.59
RATE OF DESCENT (Grad 5.2%)	m/s	2.2	2.6	3.1	3.5	3.9	4.4	4.8	5.3	5.7	6.1	6.6

CHANGE: UTP 1