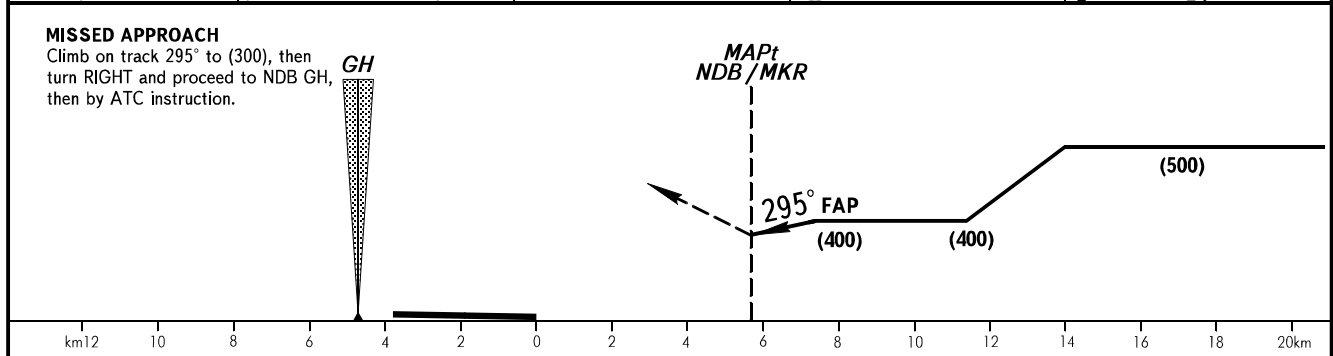
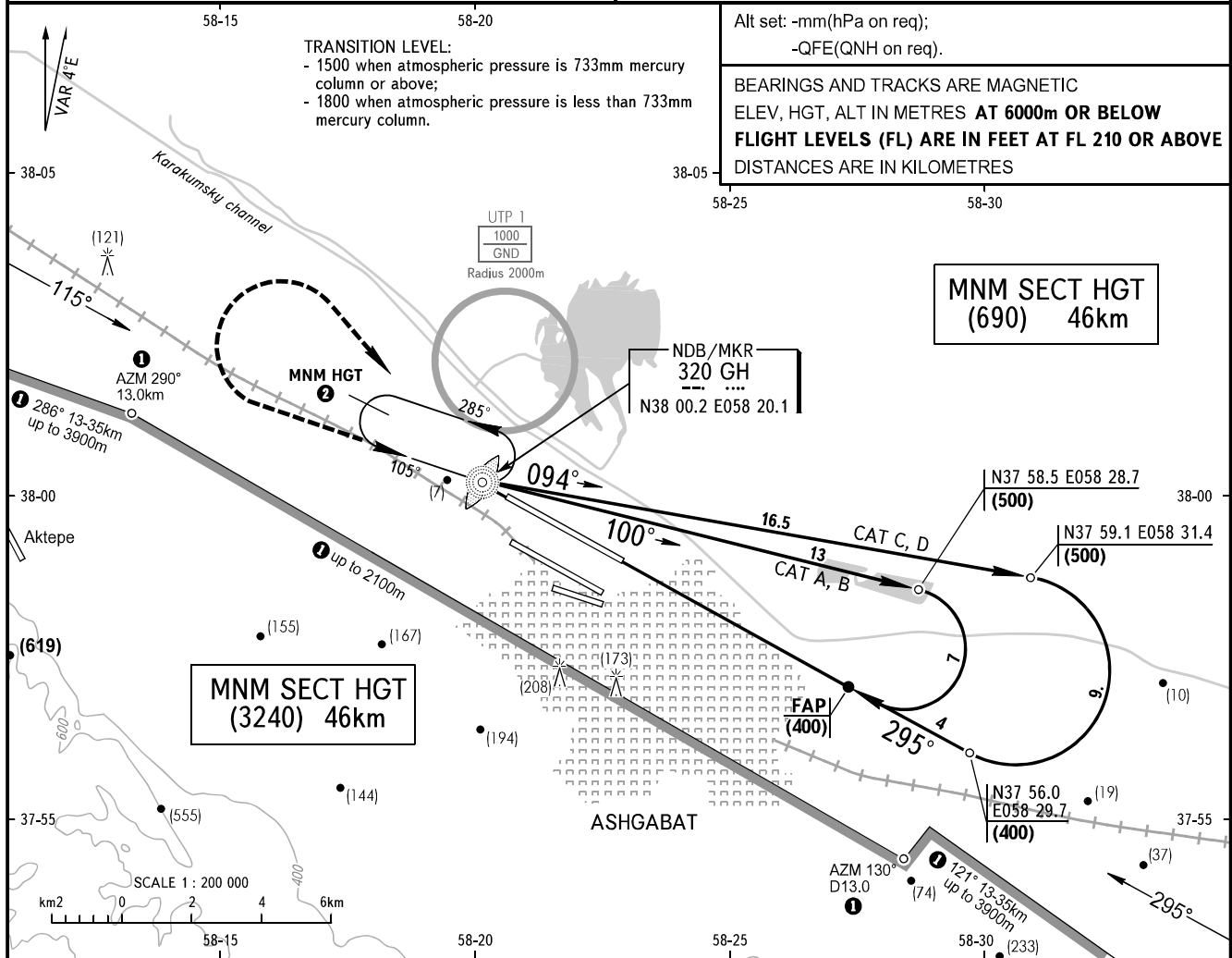


**INSTRUMENT  
APPROACH  
CHART - ICAO**

APPROACH	<b>123.5</b>
KRUG	<b>118.7</b>
START	<b>120.0</b>

**ASHGABAT, TURKMENISTAN**  
ASHGABAT  
NDB/MKR RWY 30R

TRANSITION LEVEL: 1500	AD ELEV: <b>211.0m</b>
TRANSITION HEIGHT: (900)	THR ELEV: <b>207.0m</b>



OCA/H		A	B	C	D								
Straight-in	Approach												
	NDB/MKR	520(313)	520(313)	520(313)	520(313)								
GROUND SPEED		km/h	150	180	210	240	270	300	330	360	390	420	450
FAP-THR 7400m		min:s	2.58	2.28	2.07	1.52	1.39	1.29	1.21	1.14	1.08	1.04	0.59
RATE OF DESCENT (Grad 5.2%)		m/s	2.2	2.6	3.1	3.5	3.9	4.4	4.8	5.3	5.7	6.1	6.6

**1** Limiting bearing from geo point N37 58.9 E058 21.6.  
**2** The minimum FL in the holding area over NDB/MKR GH 320 kHz is equal to transition level.

**WARNING**  
When approaching one can see lights of motor-road leading to the terminal at 360m left of RWY 30R similar to RWY lights but brighter.

CHANGE: UTP 1, HLDG 2