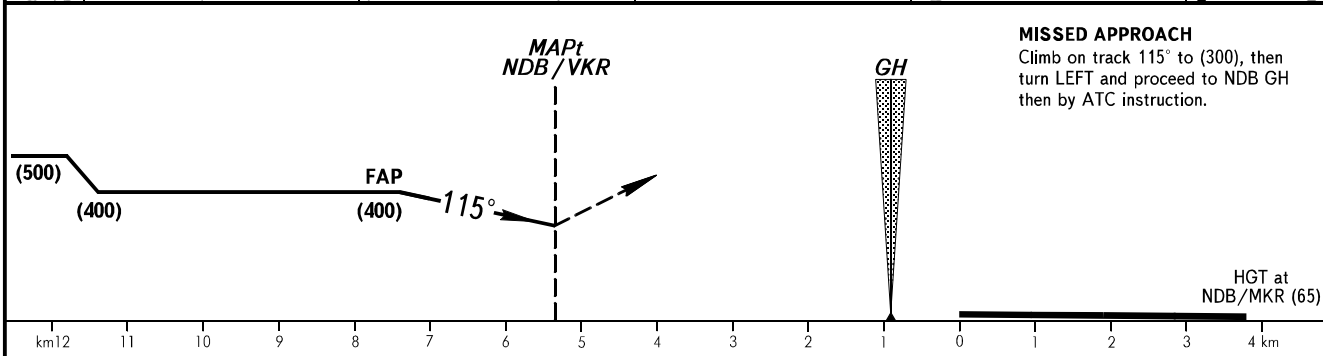
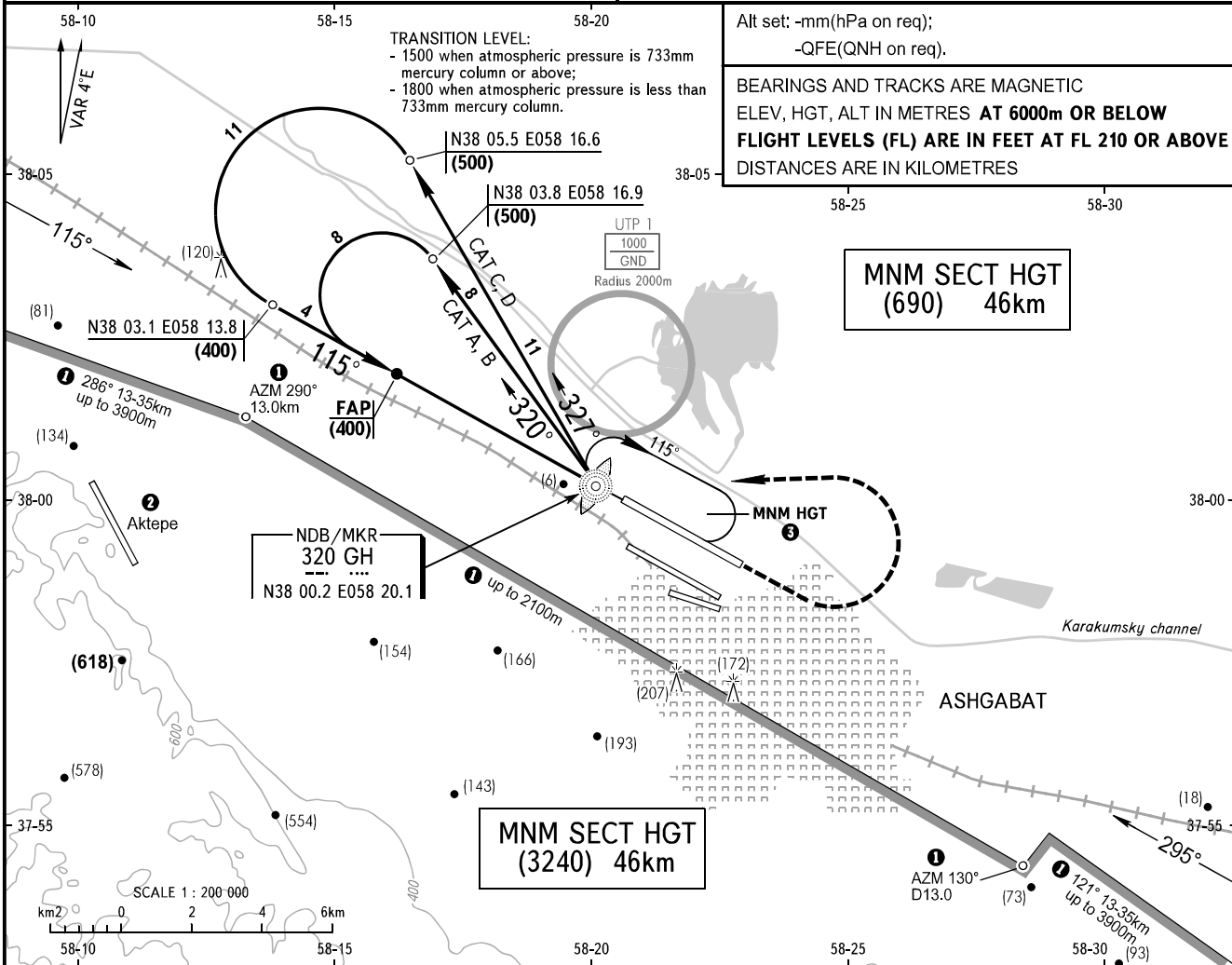


**INSTRUMENT  
APPROACH  
CHART - ICAO**

APPROACH	123.5
KRUG	118.7
START	120.0

**ASHGABAT, TURKMENISTAN**  
ASHGABAT  
NDB/MKR RWY 12L

TRANSITION LEVEL:	1500	AD ELEV:	211.0m
TRANSITION HEIGHT:	(900)	THR ELEV:	208.0m



OCA/H		A	B	C	D							
Straight-in Approach	NDB/MKR	503(295)	503(295)	503(295)	503(295)							
GROUND SPEED	km/h	150	180	210	240	270	300	330	360	390	420	450
FAP-THR 7400m	min:s	2.58	2.28	2.07	1.52	1.39	1.29	1.21	1.14	1.08	1.04	0.59
RATE OF DESCENT (Grad 5.2%)	m/s	2.2	2.6	3.1	3.5	3.9	4.4	4.8	5.3	5.7	6.1	6.6

① Limiting bearing from geo point N37 58.9 E058 21.6.  
② Attention to the crew! There is Aktepe aerodrome 16km West of ASHGABAT aerodrome, RWY 148°/328°, 2640mX44m.  
③ The minimum FL in the holding area over NDB/MKR GH 320 kHz is equal to transition level.

**WARNING**  
When approaching one can see railway lights similar to RWY lights at 100m right of RWY 12R LOM.

CHANGE: UTP 1, HLDG ③