

**INSTRUMENT
APPROACH
CHART - ICAO**

APPROACH **123.5**
KRUG **118.7**
START **120.0**

ASHGABAT, TURKMENISTAN
ASHGABAT
ILS, 2 NDB RWY 30L

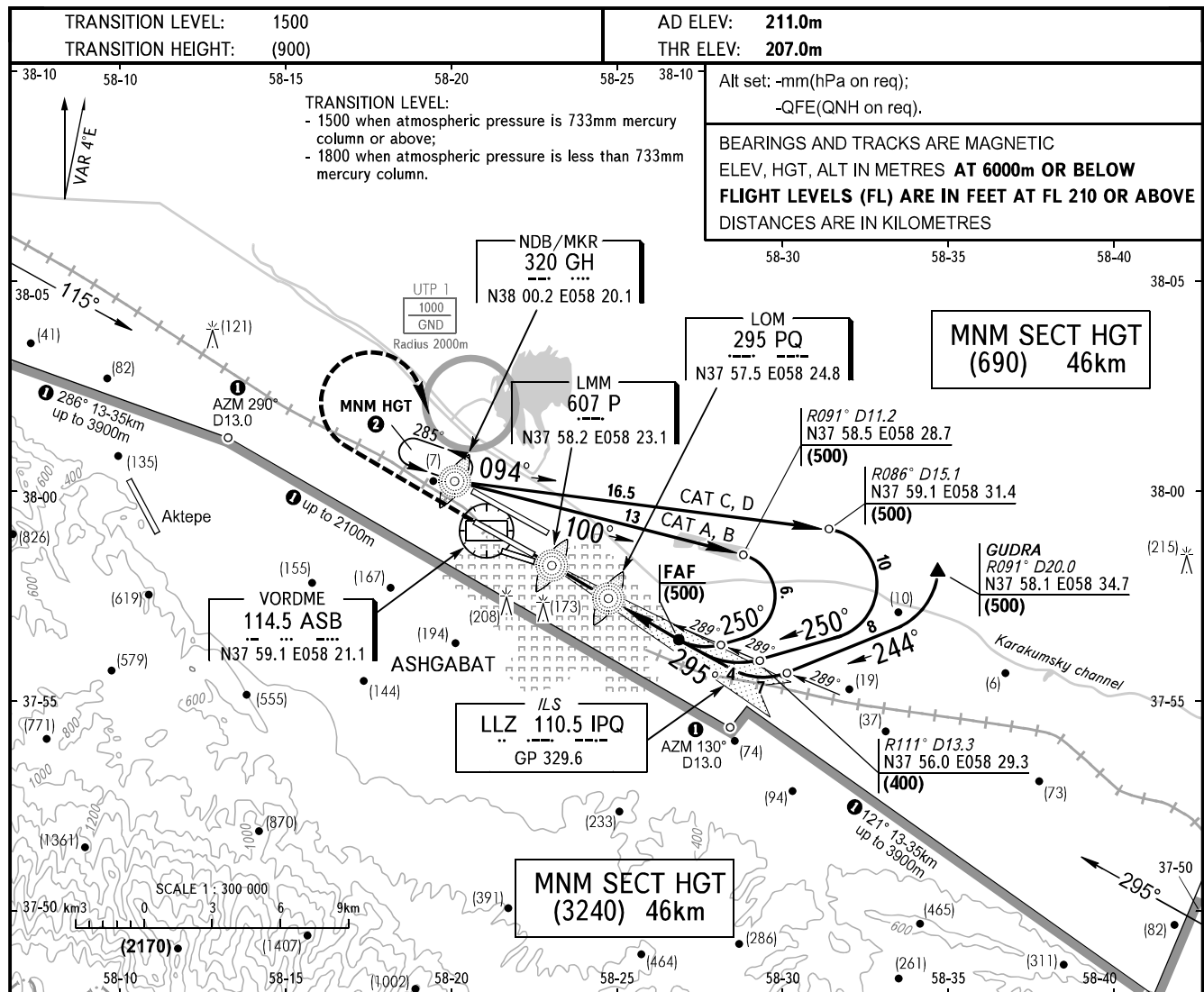
TRANSITION LEVEL: 1500
TRANSITION HEIGHT: (900)

AD ELEV: 211.0m
THR ELEV: 207.0m

TRANSITION LEVEL:
- 1500 when atmospheric pressure is 733mm mercury column or above;
- 1800 when atmospheric pressure is less than 733mm mercury column.

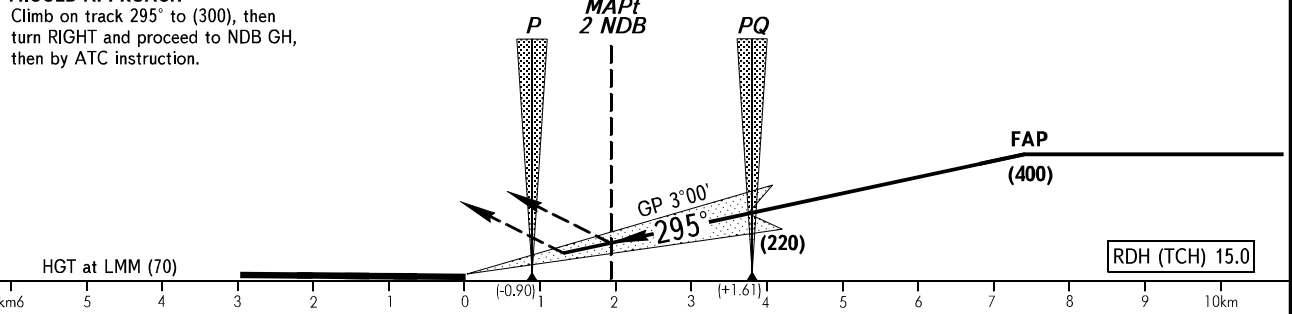
Alt set: -mm(hPa on req);
-QFE(QNH on req).

BEARINGS AND TRACKS ARE MAGNETIC
ELEV, HGT, ALT IN METRES **AT 6000m OR BELOW**
FLIGHT LEVELS (FL) ARE IN FEET **AT FL 210 OR ABOVE**
DISTANCES ARE IN KILOMETRES



MISSED APPROACH

Climb on track 295° to (300), then turn RIGHT and proceed to NDB GH, then by ATC instruction.



OCA/H		A	B	C	D							
Straight-in	Approach											
	ILS	251(44)	253(46)	256(49)	259(52)							
2 NDB		329(122)	329(122)	329(122)	329(122)							
GROUND SPEED	km/h	150	180	210	240	270	300	330	360	390	420	450
LOM-THR 3890m	min:s	1.34	1.18	1.06	0.58	0.52	0.47	0.43	0.39	0.36	0.33	0.31
RATE OF DESCENT (Grad 5.2%)	m/s	2.0	2.4	2.8	3.2	3.6	3.9	4.3	4.8	5.1	5.6	5.8

- ① Limiting bearing from geo point N37 58.9 E058 21.6.
- ② The minimum FL in the holding area over NDB/MKR GH 320 kHz is equal to transition level.

WARNING
When approaching one can see motor-road leading to the terminal better than RWY, at 700m north and parallel to RWY. Road lights are similar to RWY lights, but brighter.