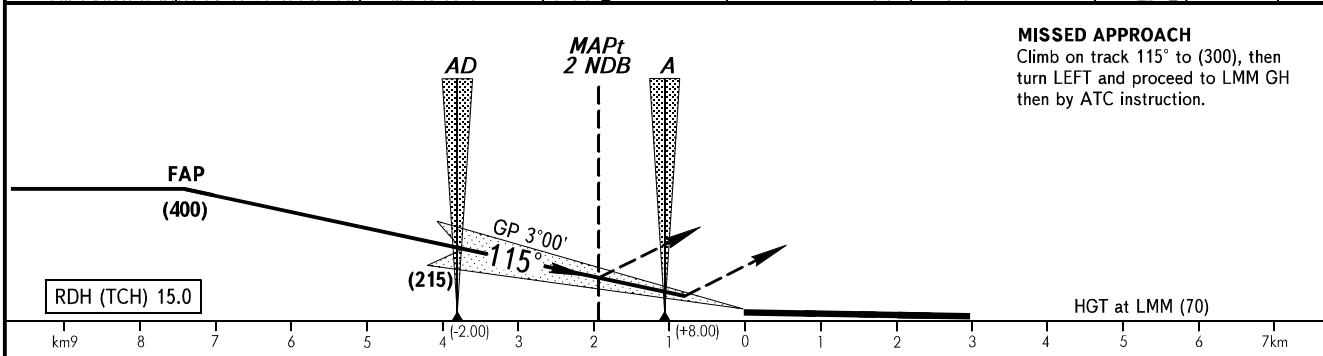
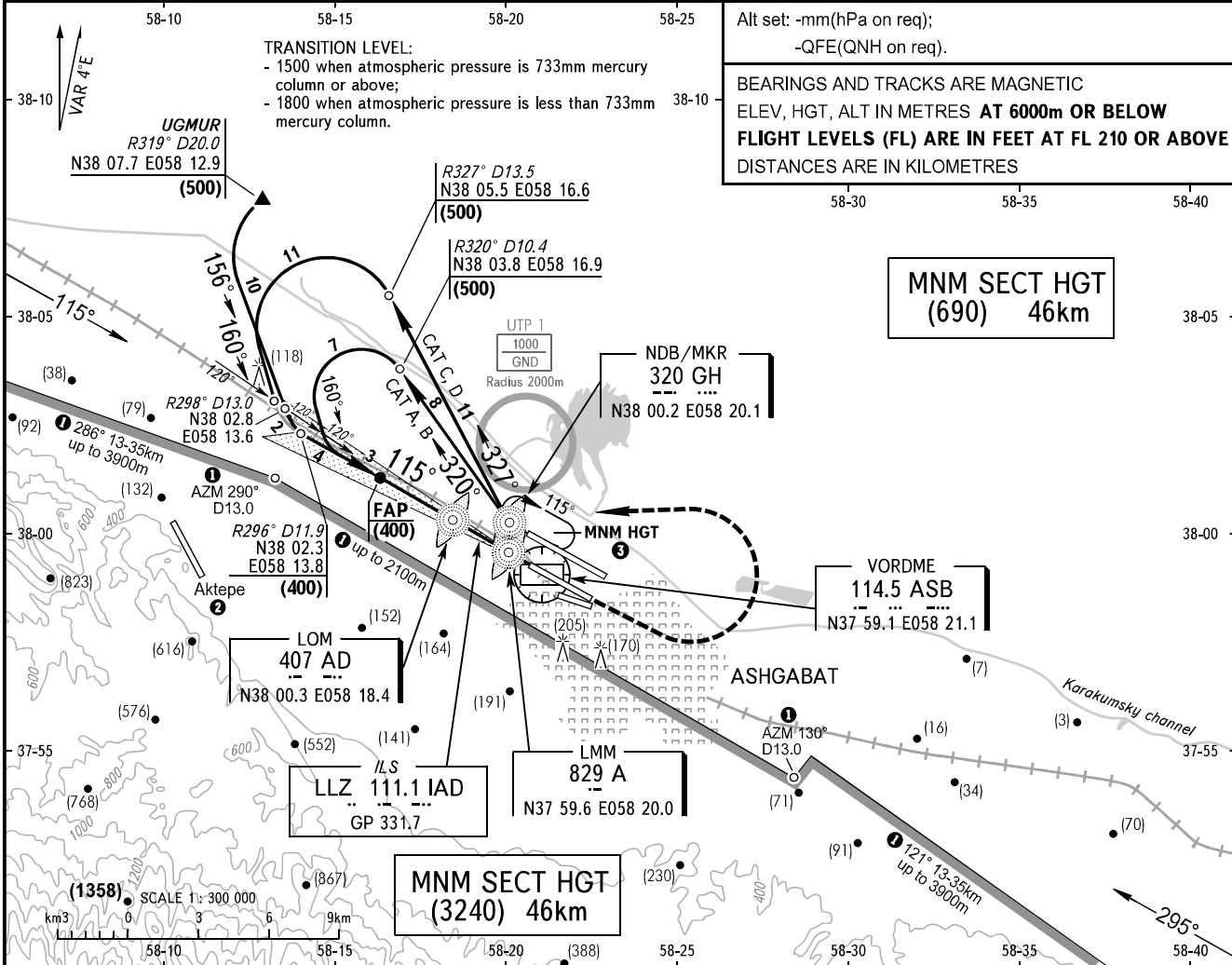


**INSTRUMENT
APPROACH
CHART - ICAO**

APPROACH **123.5**
KRUG **118.7**
START **120.0**

ASHGABAT, TURKMENISTAN
ASHGABAT
ILS, 2 NDB RWY 12R

TRANSITION LEVEL: 1500
TRANSITION HEIGHT: (900)
AD ELEV: **211.0m**
THR ELEV: **210.0m**



OCA/H		A	B	C	D
Straight-in Approach	ILS	254(44)	257(47)	261(51)	266(56)
	2 NDB	334(124)	334(124)	334(124)	334(124)

- 1 Limiting bearing from geo point N37 58.9 E058 21.6.
- 2 Attention to the crew! There is Aktepe aerodrome 16km West of ASHGABAT aerodrome, RWY 148°/328°, 2640x44.
- 3 The minimum FL in the holding area over NDB/MKR GH 320 kHz is equal to transition level.

GROUND SPEED	km/h	150	180	210	240	270	300	330	360	390	420	450
LOM-THR 3800m	min:s	1.31	1.16	1.05	0.57	0.51	0.46	0.42	0.38	0.35	0.32	0.31
RATE OF DESCENT (Grad 5.2%)	m/s	2.0	2.4	2.8	3.2	3.6	3.9	4.3	4.8	5.1	5.6	5.8

CHANGE: UTP 1, HLDG 5