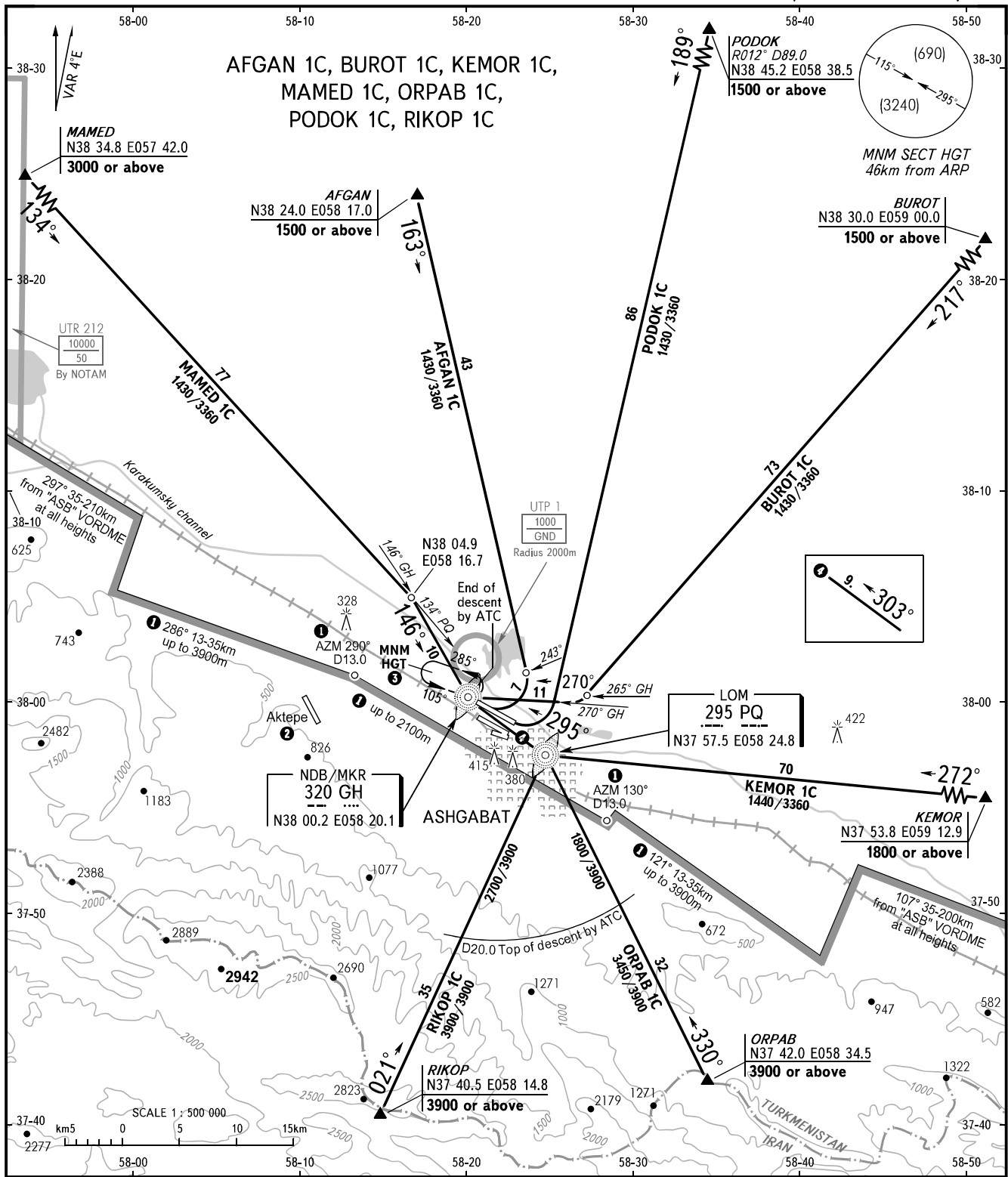


STANDARD ARRIVAL CHART
INSTRUMENT (STAR) - ICAO

TRANSITION
LEVEL : 1500

ASHGABAT, TURKMENISTAN
ASHGABAT
NDB/MKR RWY 30R/30L



APPROACH	123.5
KRUG	118.7
START	120.0

BEARINGS AND TRACKS ARE MAGNETIC
ALTITUDES, HEIGHTS AND ELEVATIONS ARE IN METRES **AT 6000m OR BELOW**
DISTANCES ARE IN KILOMETRES
FLIGHT LEVELS (FL) ARE IN FEET AT FL 210 OR ABOVE

- ① Limiting bearing from geo point N37 58.9 E058 21.6.
 - ② Attention to the crew! There is Aktepe aerodrome, 16km West of ASHGABAT aerodrome, RWY 148°/328°, 2640mx44m.
 - ③ The minimum FL in the holding area over NDB/MKR GH 320 kHz is equal to transition level.
- TRANSITION LEVEL:
- 1500 when atmospheric pressure is 733mm mercury column or above;
- 1800 when atmospheric pressure is less than 733mm mercury column.
- WARNING**
Maximum IAS 420km/h at 3000 or below within 30km radius.

CHANGE: UTP 1, HLDG ③