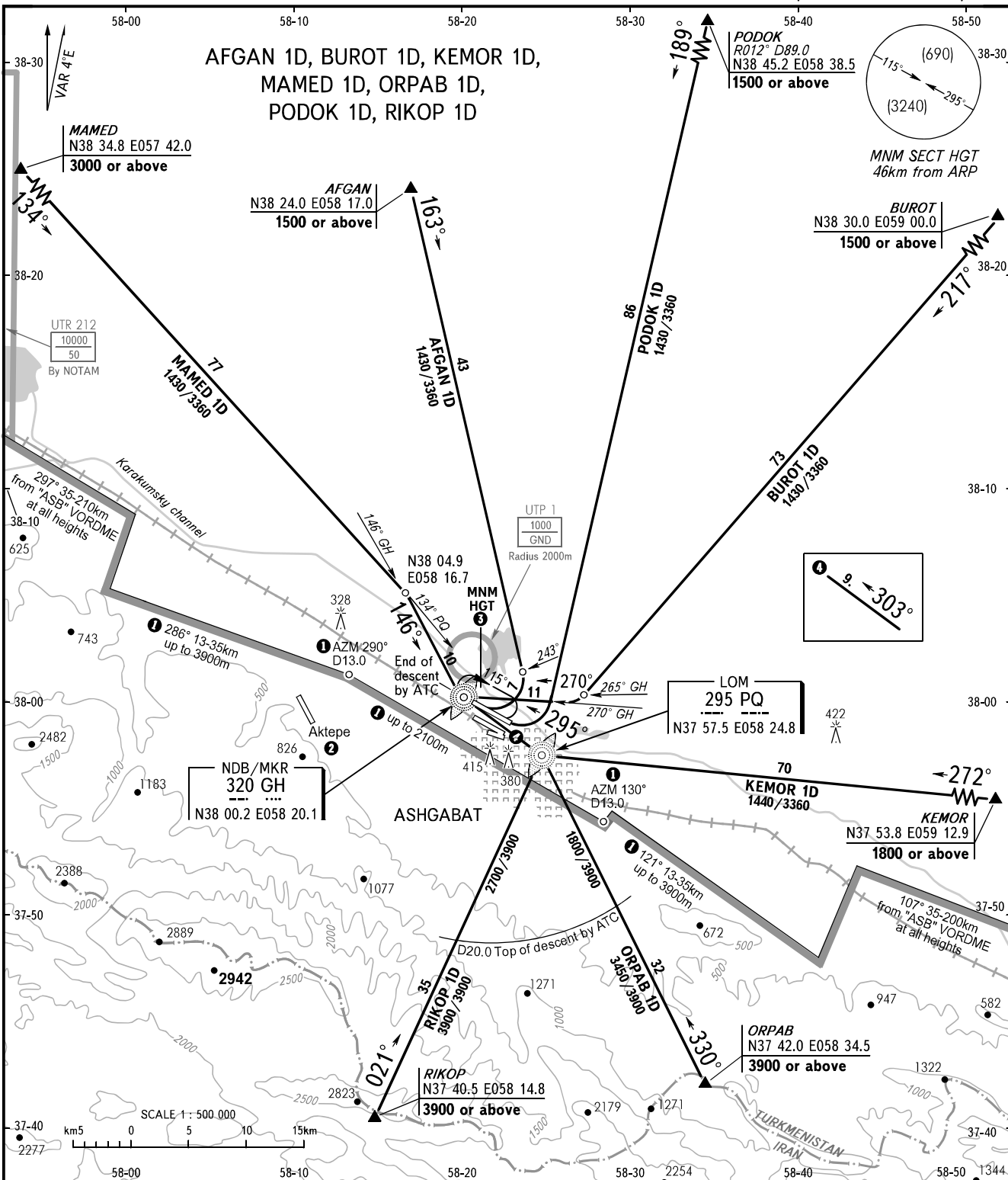


STANDARD ARRIVAL CHART
INSTRUMENT (STAR) - ICAO

TRANSITION
LEVEL: 1500

ASHGABAT, TURKMENISTAN
ASHGABAT
NDB/MKR RWY 12L/12R



APPROACH	123.5
KRUG	118.7
START	120.0

BEARINGS AND TRACKS ARE MAGNETIC
ALTITUDES, HEIGHTS AND ELEVATIONS ARE IN METRES AT 6000m OR BELOW
DISTANCES ARE IN KILOMETRES
FLIGHT LEVELS (FL) ARE IN FEET AT FL 210 OR ABOVE

- ① Limiting bearing from geo point N37 58.9 E058 21.6.
 - ② Attention to the crew! There is Aktepe aerodrome, 16km West of ASHGABAT aerodrome, RWY 148°/328°, 2640mx44m.
 - ③ The minimum FL in the holding area over NDB/MKR GH 320 kHz is equal to transition level.
- TRANSITION LEVEL:**
- 1500 when atmospheric pressure is 733mm mercury column or above;
- 1800 when atmospheric pressure is less than 733mm mercury column.
- WARNING**
Maximum IAS 420km/h at 3000 or below within 30km radius.

CHANGE: UTR 1, HLD5