

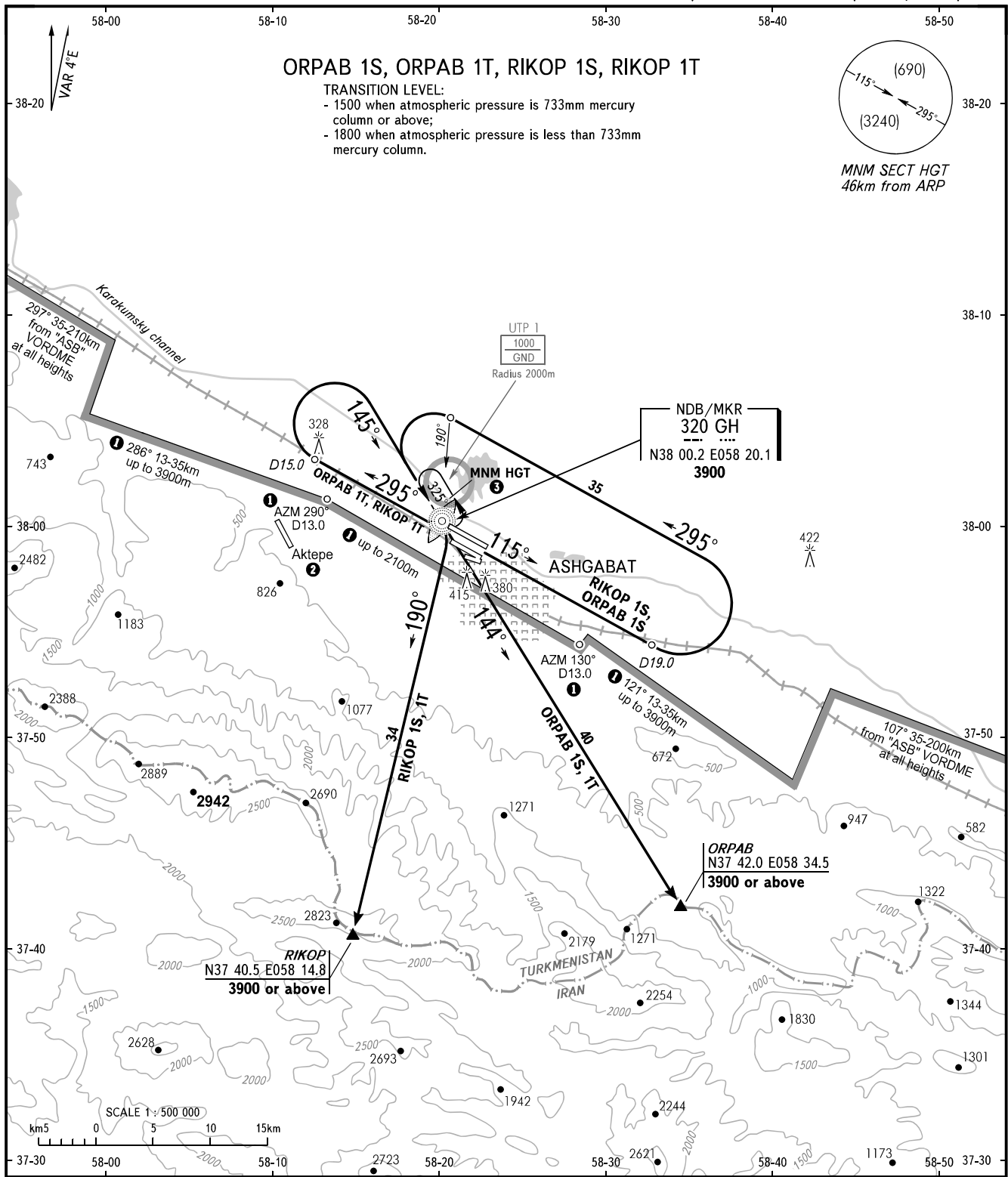
STANDARD DEPARTURE CHART
INSTRUMENT (SID) - ICAO

TRANSITION
HEIGHT : (900)

ASHGABAT, TURKMENISTAN

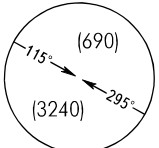
ASHGABAT

NDB/MKR RWY 12L/30R, 12R/30L



ORPAB 1S, ORPAB 1T, RIKOP 1S, RIKOP 1T

TRANSITION LEVEL:
- 1500 when atmospheric pressure is 733mm mercury column or above;
- 1800 when atmospheric pressure is less than 733mm mercury column.



MNM SECT HGT
46km from ARP

NDB/MKR
320 GH
N38 00.2 E058 20.1
3900

ORPAB
N37 42.0 E058 34.5
3900 or above

RIKOP
N37 40.5 E058 14.8
3900 or above

START	120.0
KRUG	118.7
APPROACH	123.5
CONTROL	135.2

- ① Limiting bearing from geo point N37 58.9 E058 21.6.
- ② Attention to the crew! There is Aktepe aerodrome, 16km West of ASHGABAT aerodrome, RWY 148°/328°, 2640mx44m.
- ③ The minimum FL in the holding area over NDB/MKR GH 320 kHz is equal to transition level.

WARNING:
- Proceed to RIKOP and ORPAB when in contact with TEHRAN ACC.
- For flights to Aktepe AD after take-off from RWY 30L/30R initial turn shall be executed as directed by ATC.

BEARINGS AND TRACKS ARE MAGNETIC
ALTITUDES, HEIGHTS AND ELEVATIONS ARE IN METRES AT 6000m OR BELOW
DISTANCES ARE IN KILOMETRES
FLIGHT LEVELS (FL) ARE IN FEET AT FL 210 OR ABOVE