

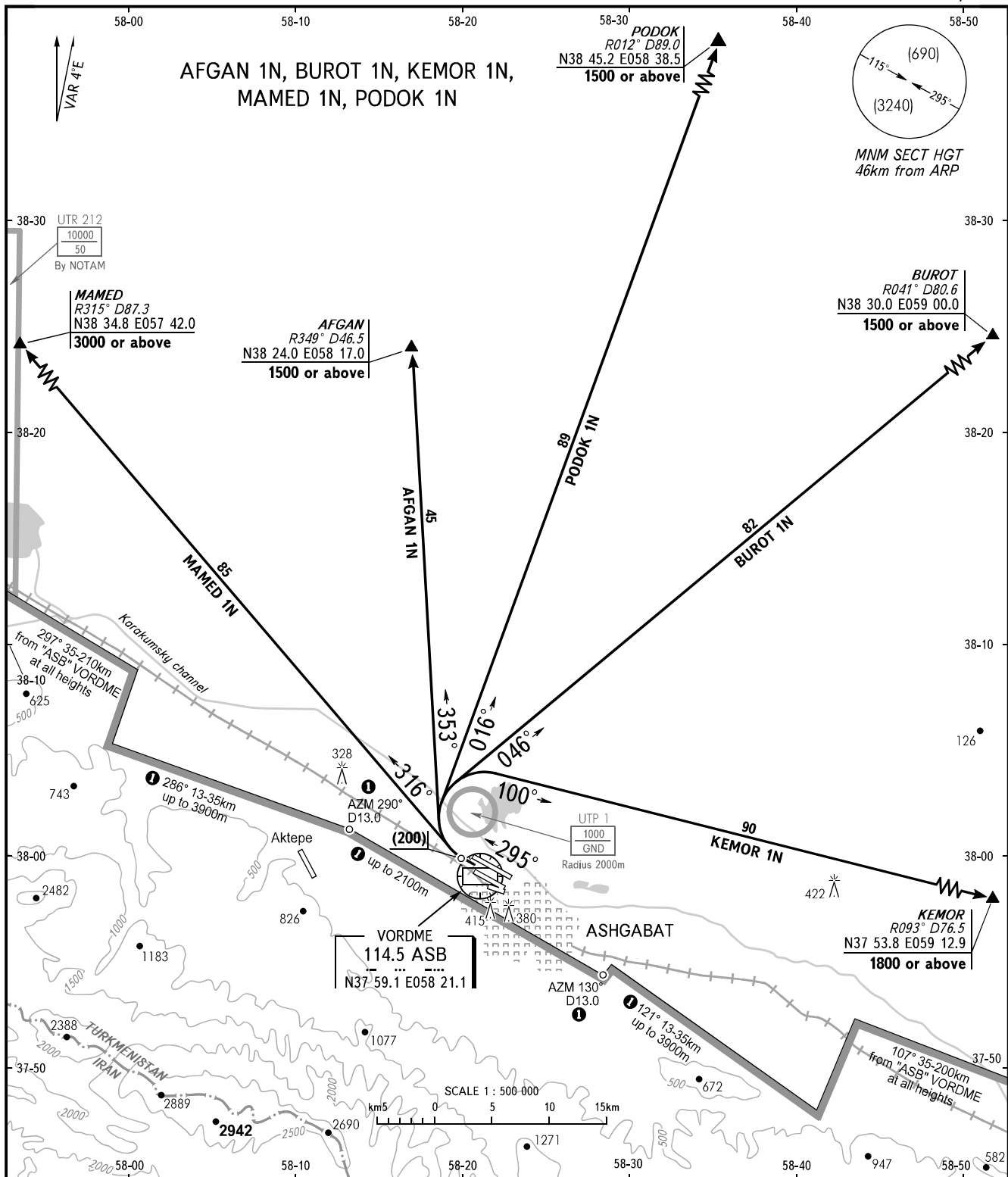
STANDARD DEPARTURE CHART
INSTRUMENT (SID) - ICAO

TRANSITION
HEIGHT : (900)

ASHGABAT, TURKMENISTAN

ASHGABAT

RWY 30R/30L



START	120.0
KRUG	118.7
APPROACH	123.5
CONTROL	135.2

① Limiting bearing from geo point N37 58.9 E058 21.6.

BEARINGS AND TRACKS ARE MAGNETIC
ALTITUDES, HEIGHTS AND ELEVATIONS ARE IN METRES AT 6000m OR BELOW
DISTANCES ARE IN KILOMETRES
FLIGHT LEVELS (FL) ARE IN FEET AT FL 210 OR ABOVE