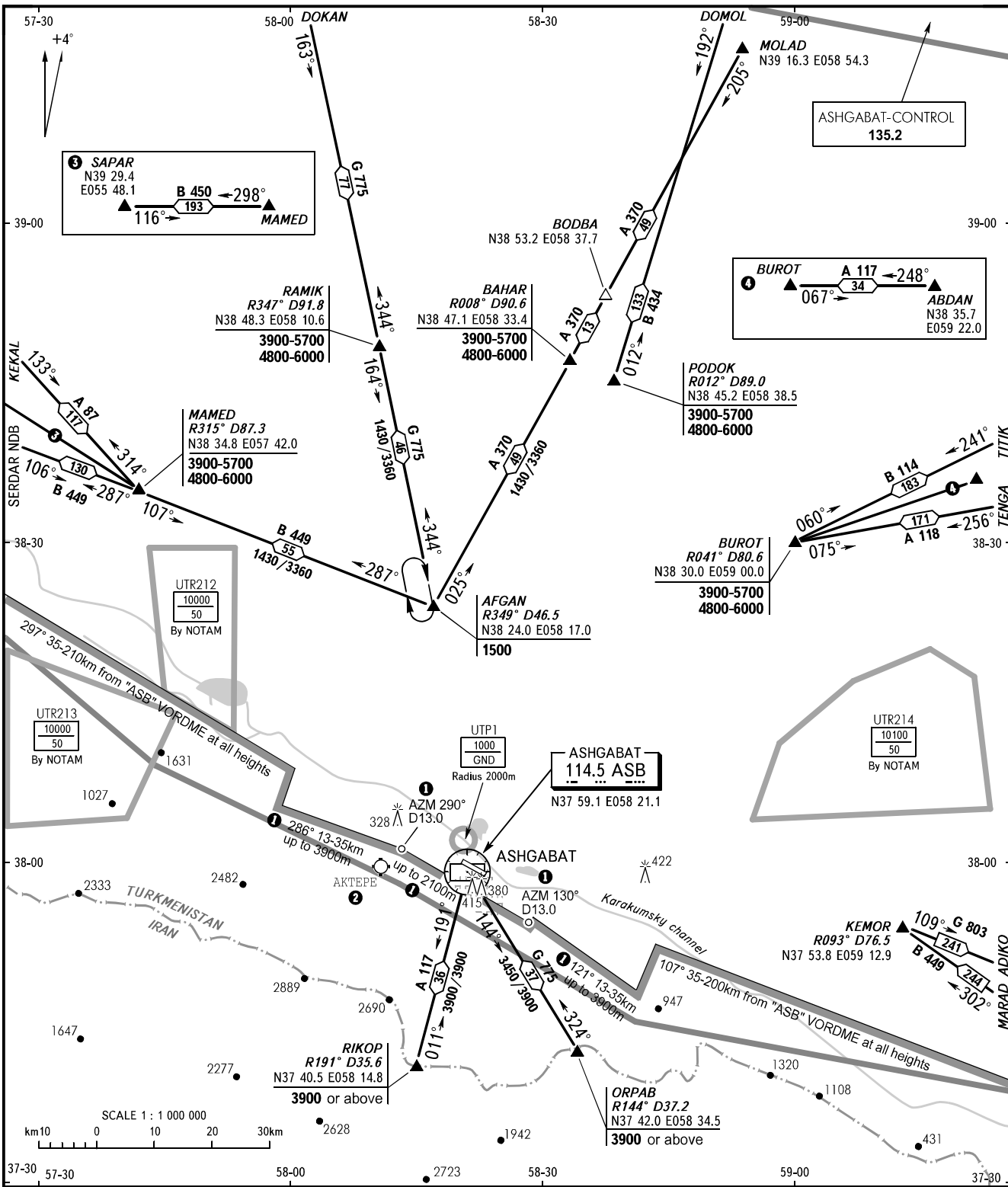


AREA CHART - ICAO

ARRIVAL, DEPARTURE
AND TRANSIT ROUTES

ASHGABAT, TURKMENISTAN

TMA ASHGABAT



CONTROL	135.2
APPROACH	123.5
KRUG	118.7
TRANSIT	131.900

- ① Limiting bearing from geo point N37 58.9 E058 21.6.
- ② Attention to the crew! There is Aktepe aerodrome, 16km West of ASHGABAT aerodrome, RWY 148°/328°, 2640mx44m.

BEARINGS AND TRACKS ARE MAGNETIC
ALTITUDES, HEIGHTS AND ELEVATIONS ARE IN METRES AT 6000m OR BELOW
DISTANCES ARE IN KILOMETRES
FLIGHT LEVELS (FL) ARE IN FEET AT FL210 OR ABOVE

CHANGE: G 803, A 118