

AERODROME  
CHART - ICAO

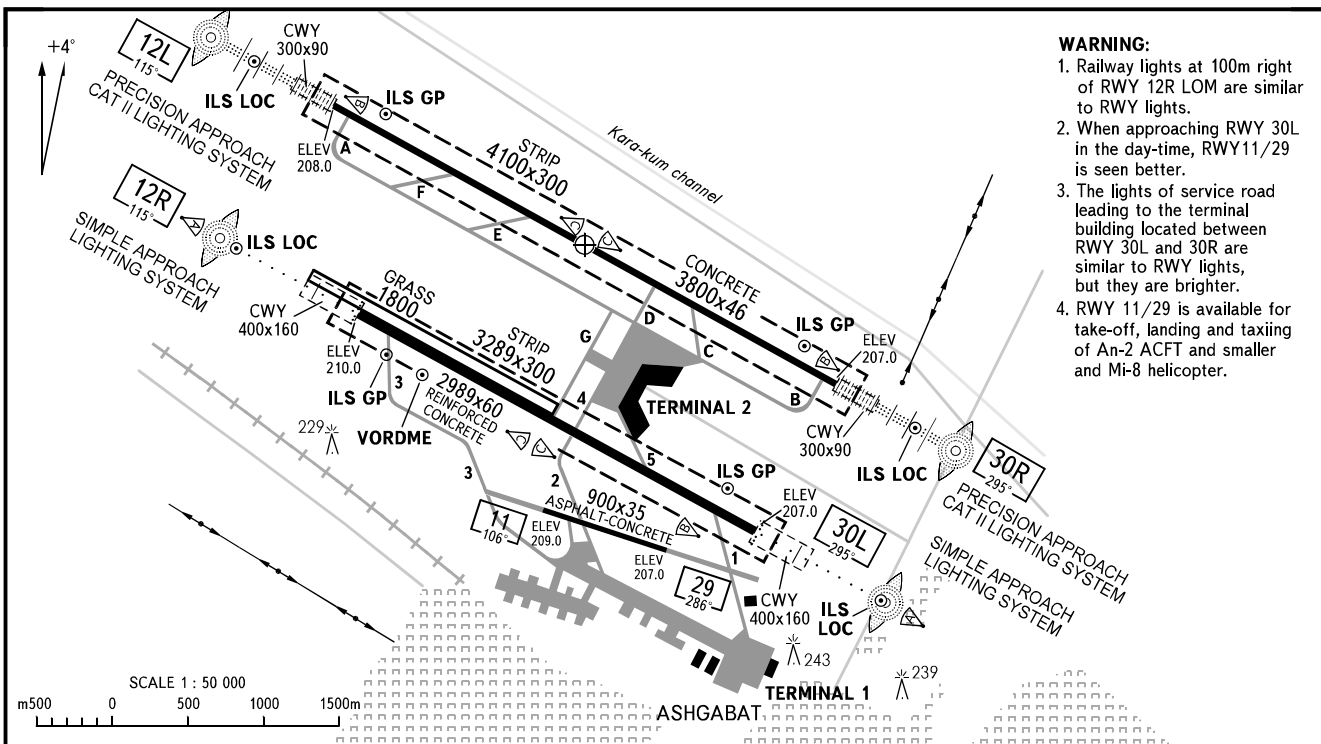
ARP  
N37°59.5'  
E058°21.8'

ELEV  
211.0m

START 120.0  
TAXIING 121.7

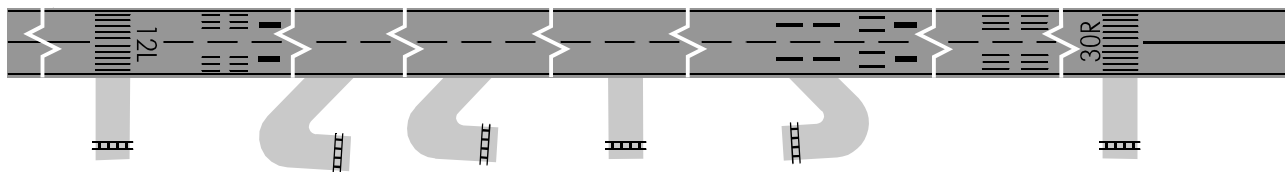
ASHGABAT, TURKMENISTAN

ASHGABAT

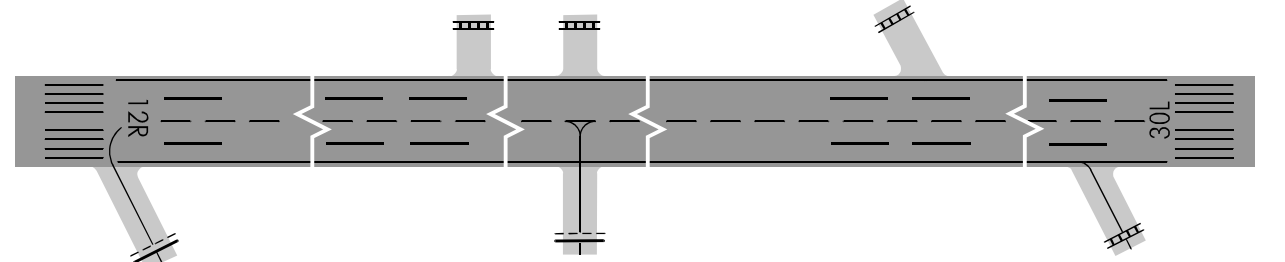


- WARNING:**
1. Railway lights at 100m right of RWY 12R LOM are similar to RWY lights.
  2. When approaching RWY 30L in the day-time, RWY 11/29 is seen better.
  3. The lights of service road leading to the terminal building located between RWY 30L and 30R are similar to RWY lights, but they are brighter.
  4. RWY 11/29 is available for take-off, landing and taxiing of An-2 ACFT and smaller and Mi-8 helicopter.

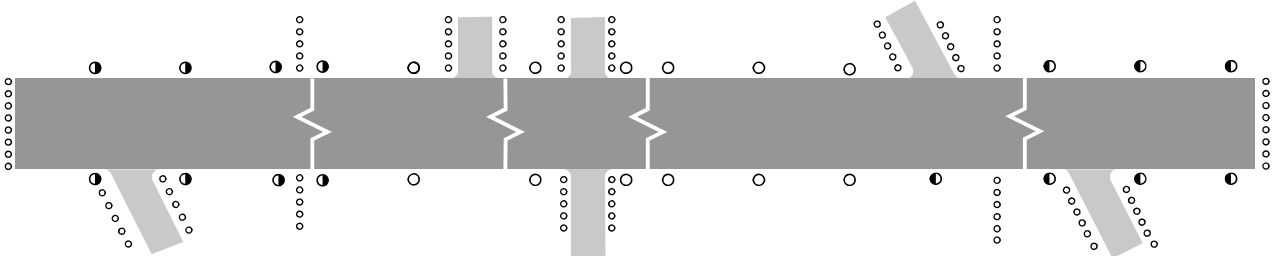
MARKING AIDS RWY 12L / 30R AND EXIT TWY



MARKING AIDS RWY 12R / 30L AND EXIT TWY

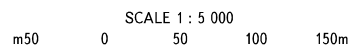


LIGHTING AIDS RWY 12R / 30L AND EXIT TWY



AERODROME LIGHTING

	RWY	DIRECTION (TRUE)	THR	BEARING STRENGTH
Approach: RWY: 12L/30R HALS RWY: 12R/30L LIL	12L	119°04'	N38°00.0' E058°20.7'	PCN 66 /R/B/W/T
	30R	299°04'	N37°59.0 E058°22.9'	
Runway: RWY 12L/30R Edge-white, last 600m yellow HIRL RWY 12R/30L Edge-white, last 600m yellow LIL	12R	119°04'	N37°59.3 E058°20.7'	PCN 13 /R/A/X/T
	30L	299°04'	N37°58.5 E058°22.5'	
Threshold: Green LIH				



ELEVATIONS AND  
DIMENSIONS IN METRES  
BEARINGS ARE MAGNETIC

CHANGE: MARKING AIDS RWY 12L/30R, 12R/30L