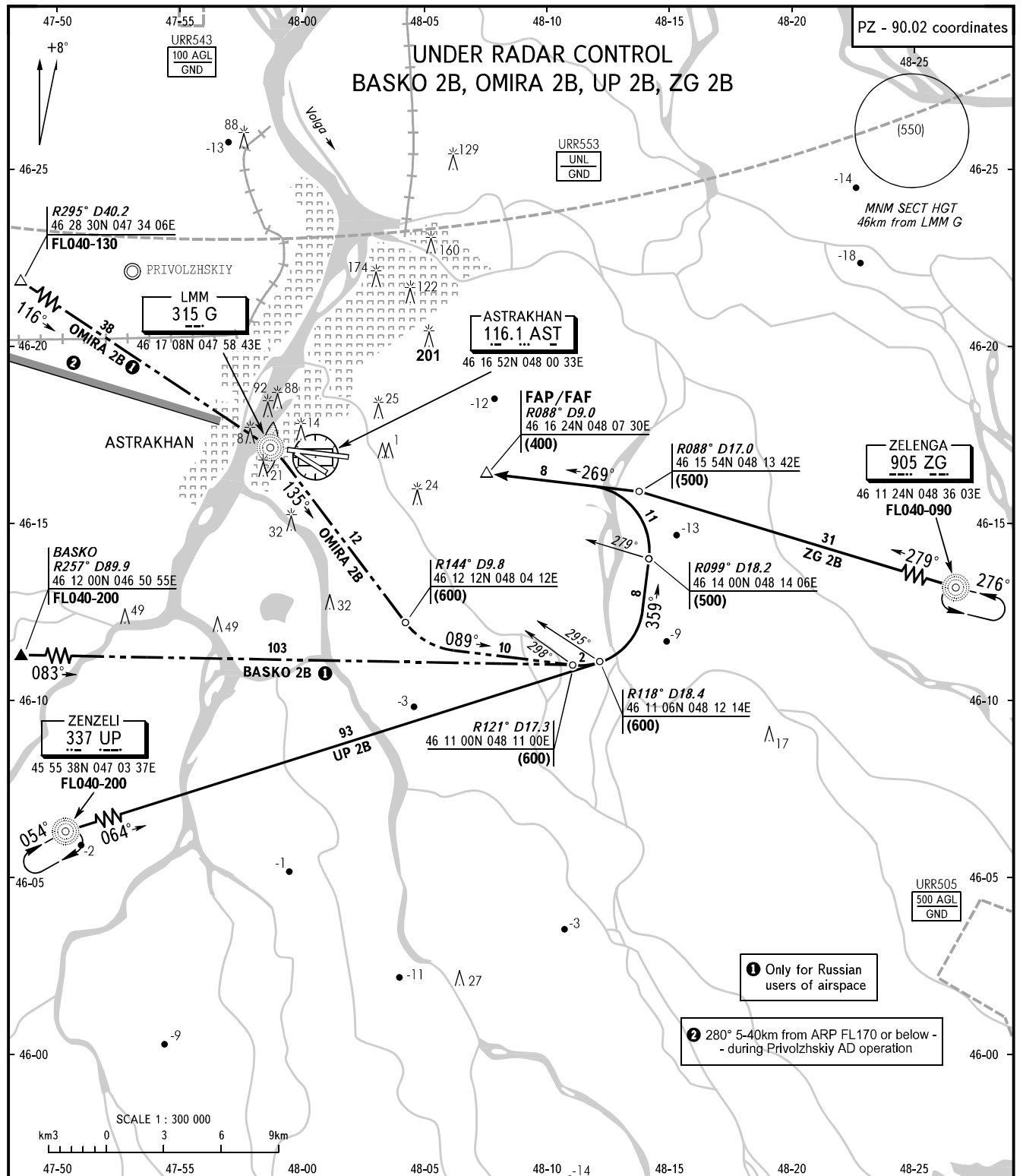


STANDARD ARRIVAL CHART
INSTRUMENT (STAR) - ICAO

TRANSITION
LEVEL: **FL040**

ASTRAKHAN, RUSSIA
ASTRAKHAN
RWY 27



① Only for Russian users of airspace

② 280° 5-40km from ARP FL170 or below -
- during Privolzhskiy AD operation

APPROACH **126.000**
KRUG **120.600**
TOWER **118.600**

BEARINGS AND TRACKS ARE MAGNETIC
ALTITUDES, HEIGHTS AND ELEVATIONS ARE IN METRES
DISTANCES ARE IN KILOMETRES

CHANGE: Withdraw GISOL 2B, FL