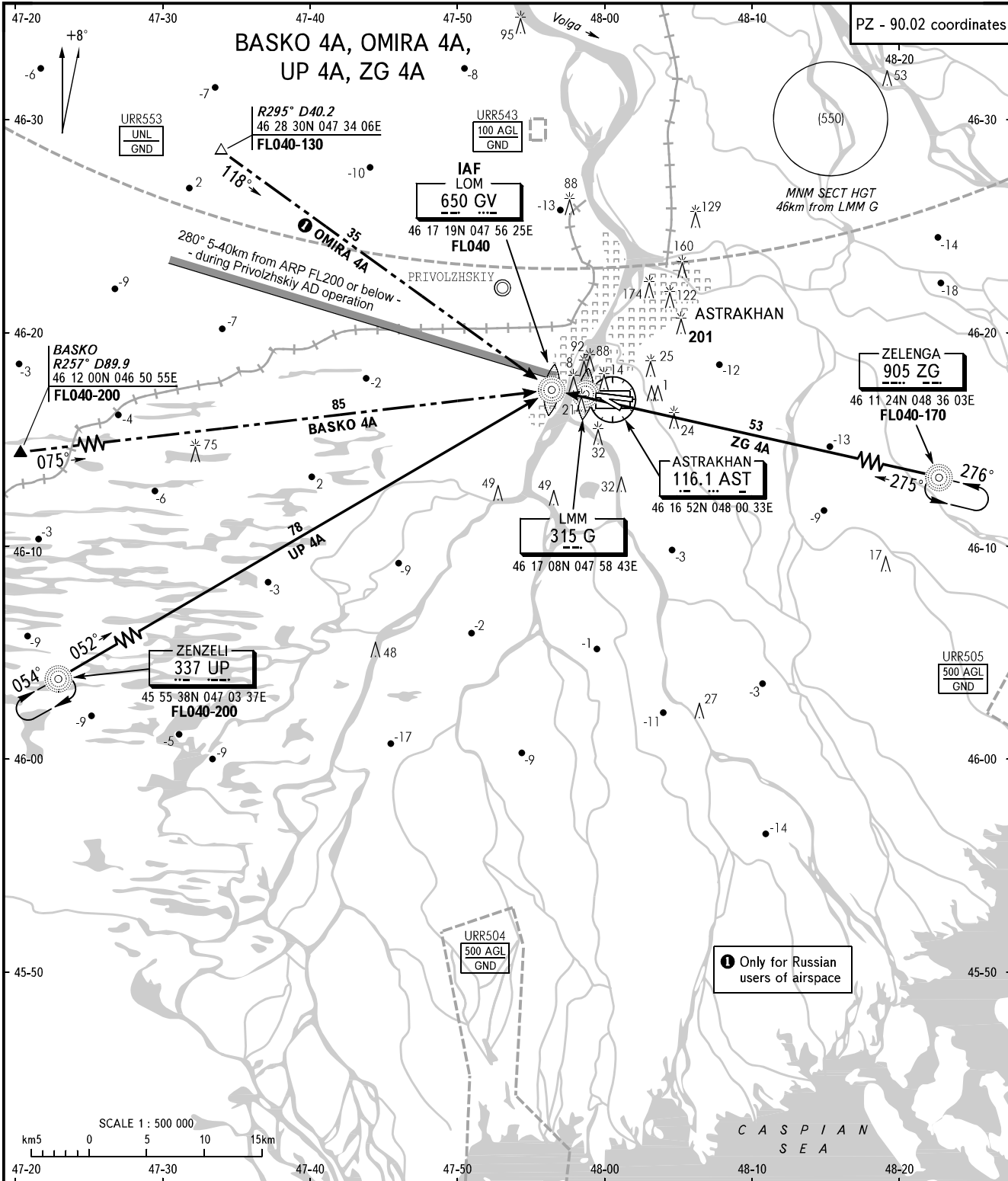


STANDARD ARRIVAL CHART  
INSTRUMENT (STAR) - ICAO

TRANSITION  
LEVEL : **FL040**

**ASTRAKHAN, RUSSIA**  
ASTRAKHAN  
RWY 09



APPROACH **126.000**  
KRUG **120.600**  
TOWER **118.600**

**WARNING**  
Noise limitation. Flight mode as per the Aeroplane Flight Manual.

BEARINGS AND TRACKS ARE MAGNETIC  
ALTITUDES, HEIGHTS AND ELEVATIONS ARE IN METRES  
DISTANCES ARE IN KILOMETRES

CHANGE: Withdraw GISOL 4A, FL