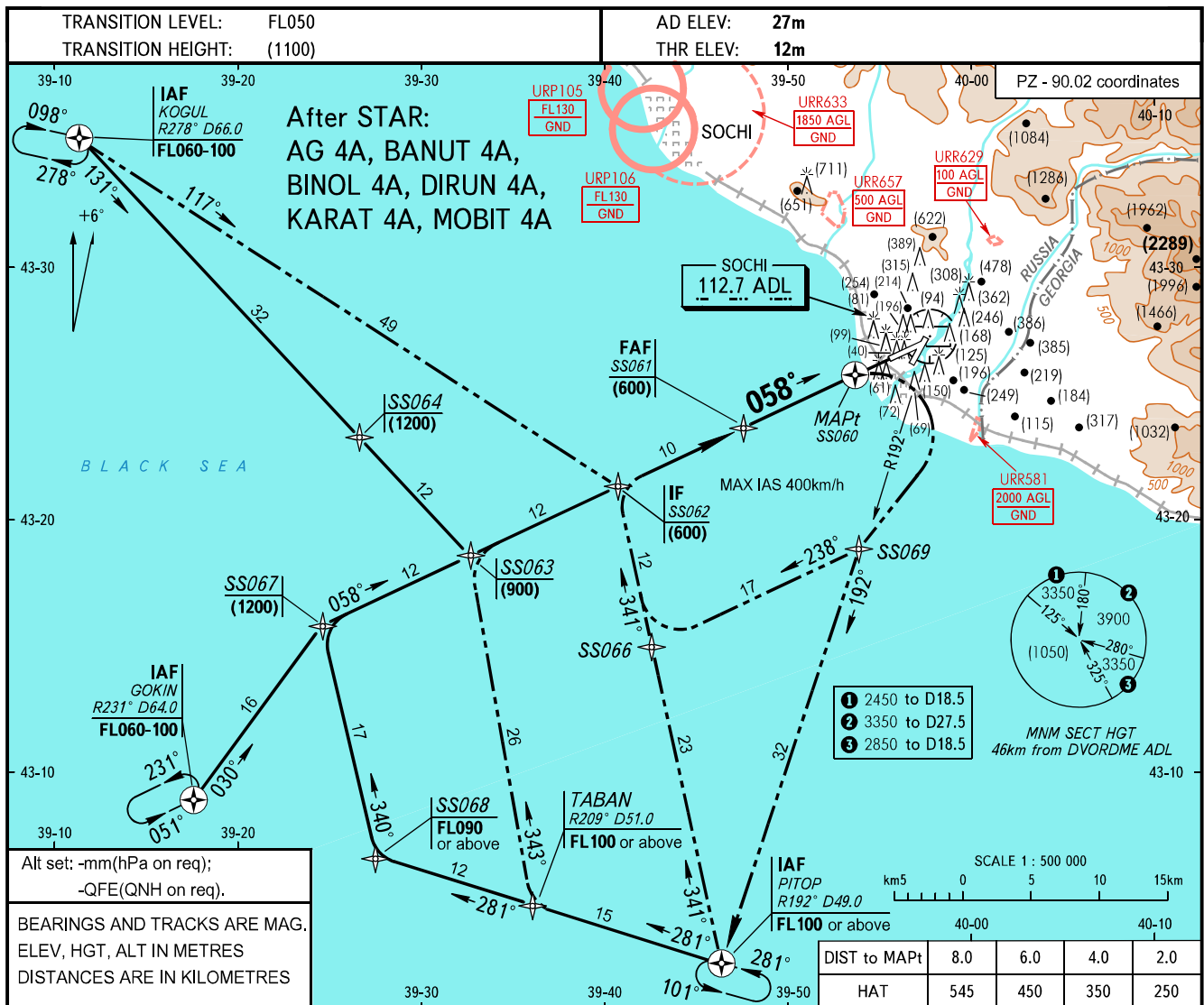


**INSTRUMENT  
APPROACH  
CHART - ICAO**

APPROACH	118.300
RADAR	119.700
TOWER	121.200

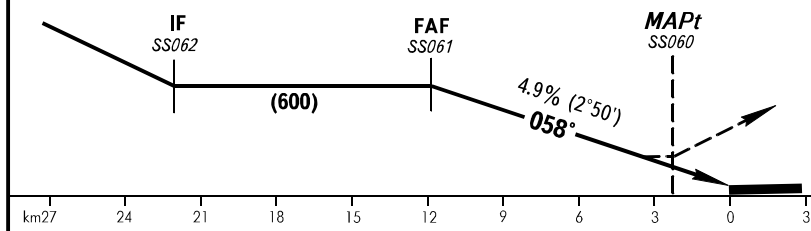
**SOCHI, RUSSIA  
SOCHI  
RNAV (GNSS) RWY 06**



Alt set: -mm(hPa on req);  
-QFE(QNH on req).

BEARINGS AND TRACKS ARE MAG.  
ELEV, HGT, ALT IN METRES  
DISTANCES ARE IN KILOMETRES

**MISSED APPROACH**  
At MAPt SS060 turn RIGHT, as early as possible, climbing to (600) and proceed to SS069. Then proceed by ATS unit instruction: proceed to the holding area over PITOP climbing to FL100 or according to the instrument approach chart SS069 - SS066 - SS062.



OCA/H		A	B	C	D								
Straight-in Approach	RNAV	MNM climb gradient for missed APCH	2.5%	182(170)	182(170)	197(185)	197(185)						
		3.1%	162(150)	162(150)									
		3.4%			172(160)	172(160)							
		3.7%			162(150)	162(150)							
GROUND SPEED		km/h	150	180	210	240	270	300	330	360	390	420	450
RATE OF DESCENT		m/s	2.0	2.5	2.9	3.3	3.7	4.1	4.5	4.9	5.3	5.7	6.1

**WARNING:**  
1. Heavy turbulence with down-draughts is expected on final.  
2. Strengthened part of CWY at RWY 06 THR is 75m.