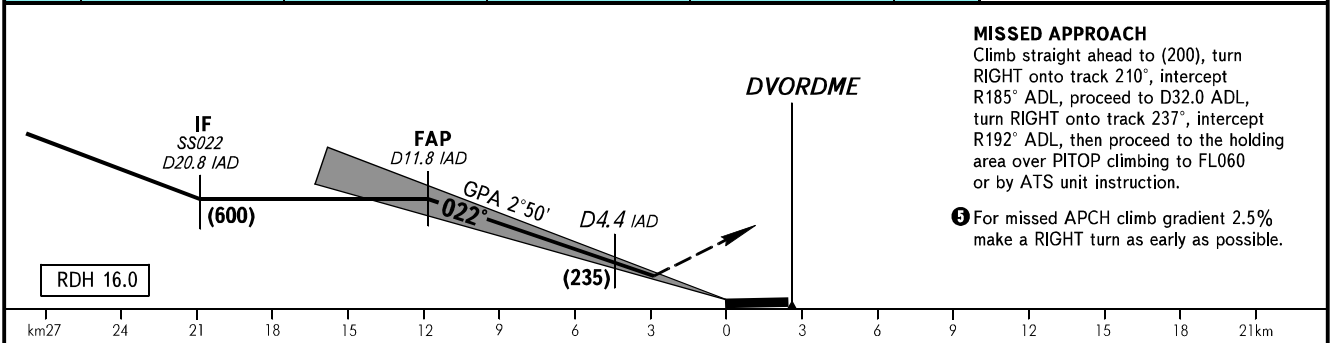
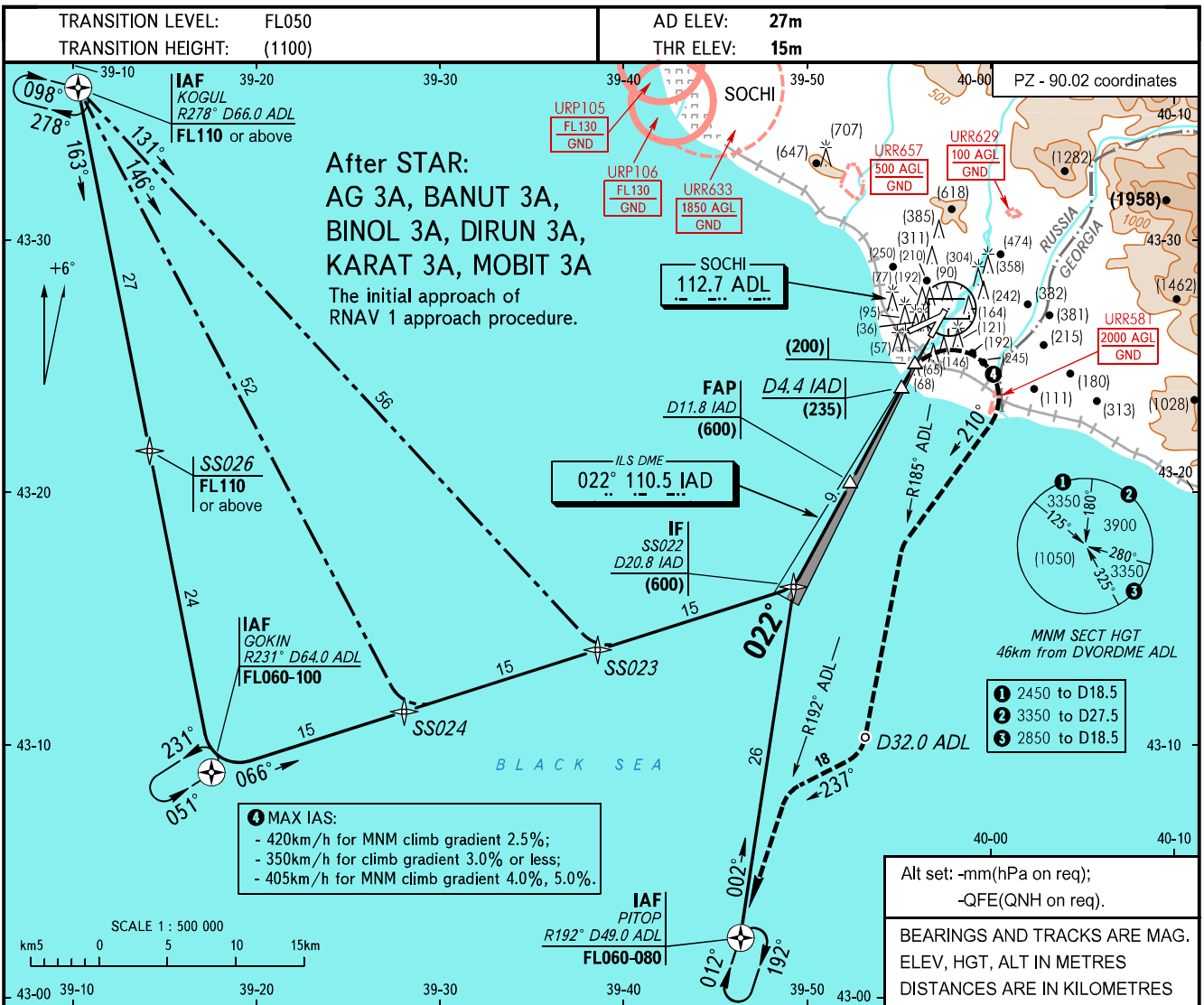


**INSTRUMENT
APPROACH
CHART - ICAO**

| | |
|----------|---------|
| APPROACH | 118.300 |
| RADAR | 119.700 |
| TOWER | 124.600 |

**SOCHI, RUSSIA
SOCHI
ILS DME RWY 02**



| | | OCA/H | | | | | | | | | | | | | | | | | |
|-------------------------|-----|---|------|----------|----------|----------|----------|-----|-----|-----|-----|-----|-----|-----|--|--|--|--|--|
| | | | | | | A | B | C | D | | | | | | | | | | |
| Straight-in Approach | ILS | MNM climb gradient for missed APCH | 2.5% | 246(230) | 246(230) | 246(230) | 251(235) | | | | | | | | | | | | |
| | | | 3.0% | 206(190) | 206(190) | 211(195) | 211(195) | | | | | | | | | | | | |
| | | | 4.0% | 180(164) | 180(164) | 183(167) | 186(170) | | | | | | | | | | | | |
| | | | 5.0% | 170(154) | 170(154) | 173(157) | 176(160) | | | | | | | | | | | | |
| GROUND SPEED | | km/h | | 150 | 180 | 210 | 240 | 270 | 300 | 330 | 360 | 390 | 420 | 450 | | | | | |
| RATE OF DESCENT | | m/s | | 2.0 | 2.5 | 2.9 | 3.3 | 3.7 | 4.1 | 4.5 | 4.9 | 5.3 | 5.7 | 6.1 | | | | | |

WARNING:

1. Heavy turbulence with down-draughts is expected on final.
2. Deviation to the right is prohibited due to piers of transmission line up to 43.5m high at 200-500m from RWY centre line.
3. Distance measuring radio beacon gives values of DIST up to RWY 02 THR on frequency 110.5MHz.
4. Strengthened part of CWY at RWY 02 THR is 50m.