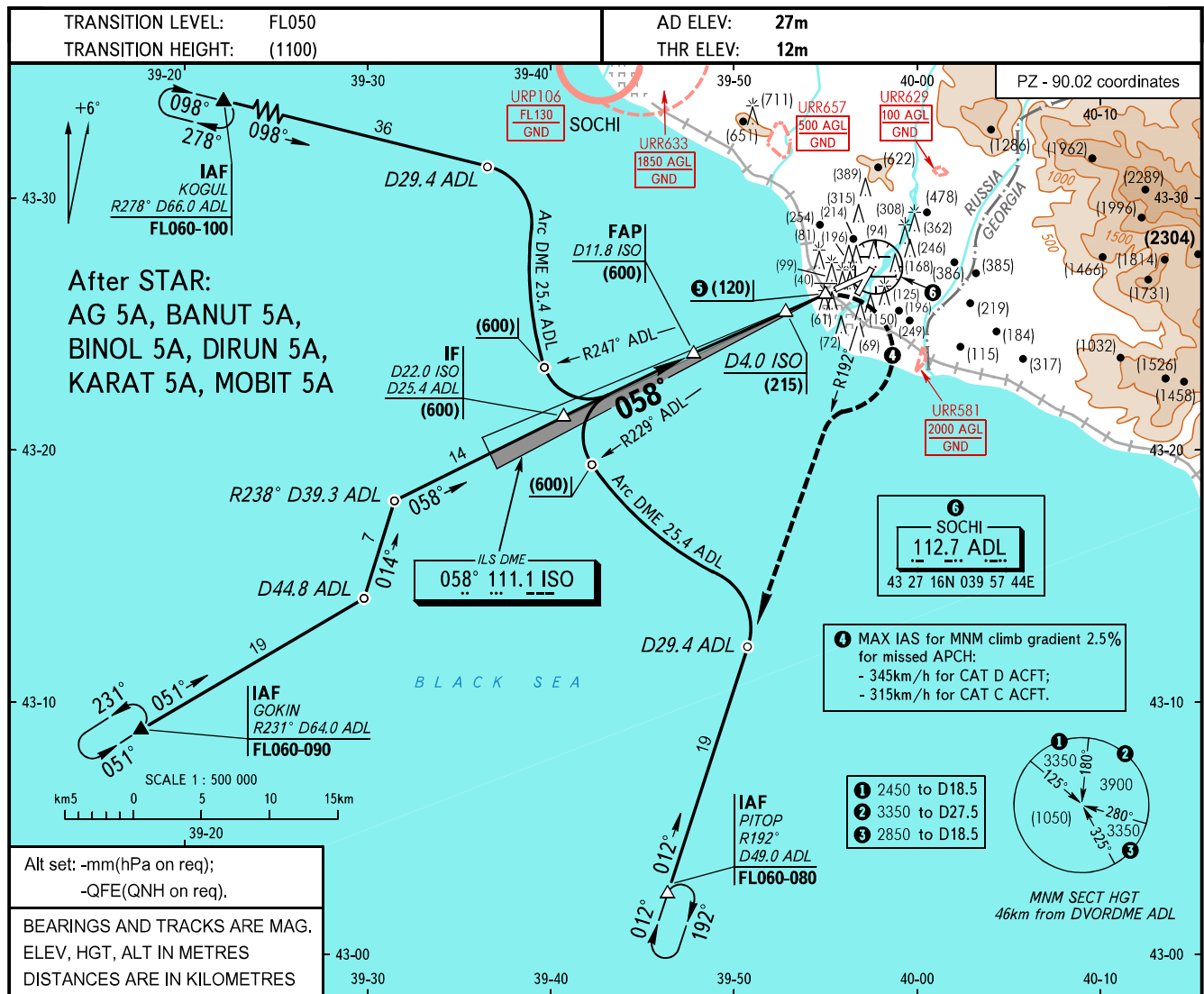


**INSTRUMENT
APPROACH
CHART - ICAO**

APPROACH	118.300
RADAR	119.700
TOWER	121.200

**SOCHI, RUSSIA
SOCHI
ILS DME RWY 06**

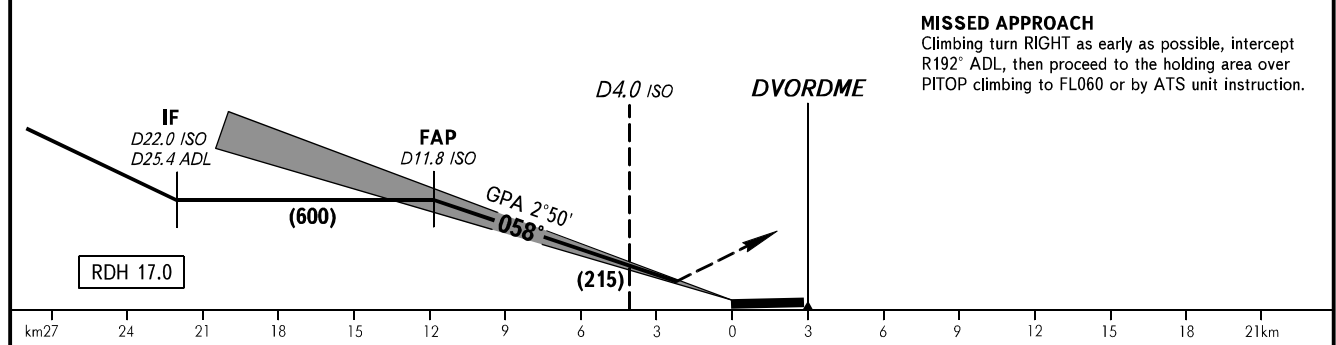
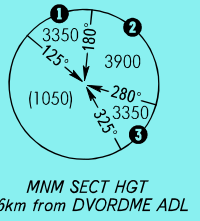


Alt set: -mm(hPa on req);
-QFE(QNH on req).

BEARINGS AND TRACKS ARE MAG.
ELEV, HGT, ALT IN METRES
DISTANCES ARE IN KILOMETRES

1 MAX IAS for MNM climb gradient 2.5% for missed APCH:
- 345km/h for CAT D ACFT;
- 315km/h for CAT C ACFT.

- 1** 2450 to D18.5
- 2** 3350 to D27.5
- 3** 2850 to D18.5



MISSED APPROACH
Climbing turn RIGHT as early as possible, intercept R192° ADL, then proceed to the holding area over PITOP climbing to FL060 or by ATS unit instruction.

		OCA/H	A	B	C	D							
Straight-in Approach	ILS	MNM climb gradient for missed APCH	2.5%	167(155)	167(155)	172(160)	182(170)						
			3.0%	157(145)	157(145)	167(155)	172(160)						
			4.0%	142(130)	142(130)	147(135)	152(140)						
			5 5.0%	117(105)	117(105)	117(105)	122(110)						
GROUND SPEED		km/h	150	180	210	240	270	300	330	360	390	420	450
RATE OF DESCENT		m/s	2.0	2.5	2.9	3.3	3.7	4.1	4.5	4.9	5.3	5.7	6.1

WARNING:

- Heavy turbulence with down-draughts is expected on final.
- Distance measuring radio beacon gives values of DIST up to RWY 06 THR on frequency 111.1MHz.
- Strengthened part of CWY at RWY 06 THR is 75m.