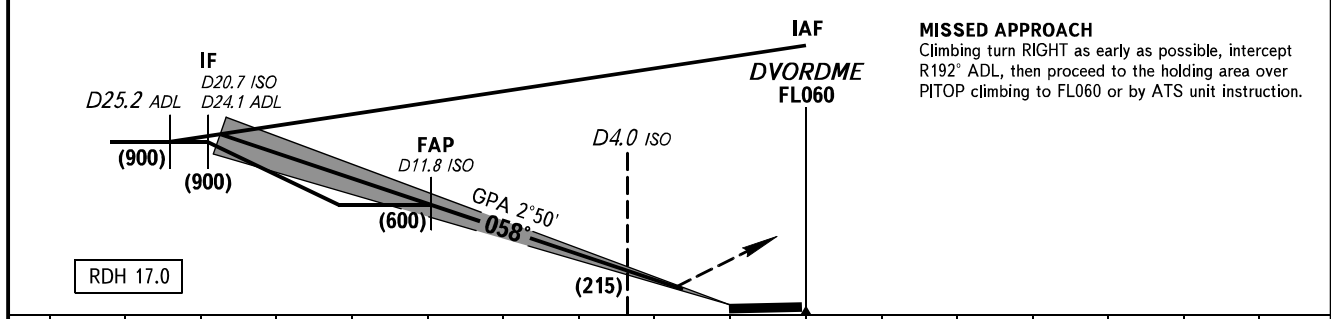
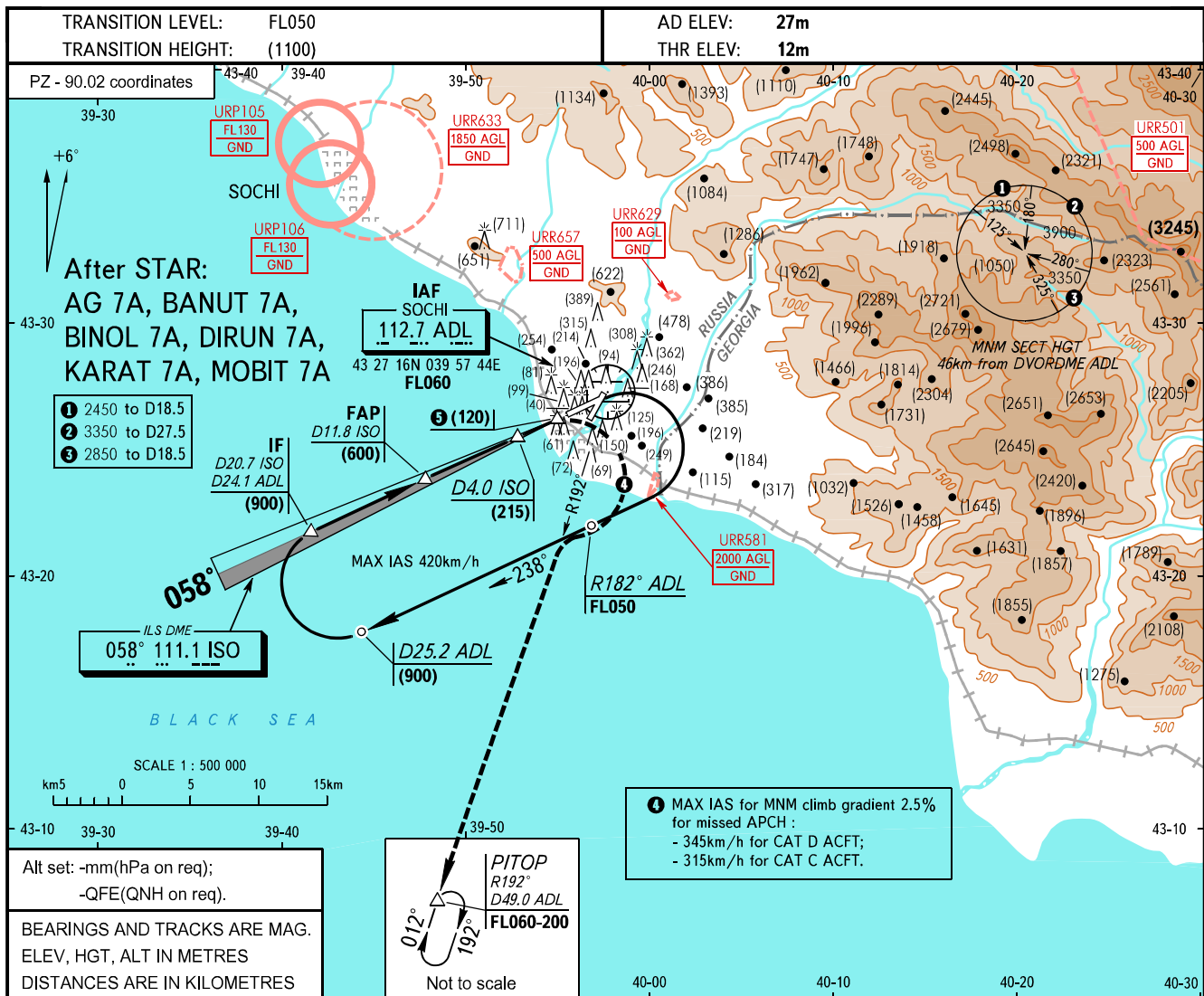


**INSTRUMENT  
APPROACH  
CHART - ICAO**

APPROACH **118.300**  
RADAR **119.700**  
TOWER **121.200**

**SOCHI, RUSSIA**  
SOCHI  
ILS DME RWY 06



**MISSED APPROACH**  
Climbing turn RIGHT as early as possible, intercept R192° ADL, then proceed to the holding area over DVORDME FL060 or by ATS unit instruction.

		OCA/H											
		A	B	C	D								
Straight-in Approach	ILS	MNM climb gradient for missed APCH	2.5%	167(155)	167(155)	172(160)	182(170)						
			3.0%	157(145)	157(145)	167(155)	172(160)						
			4.0%	142(130)	142(130)	147(135)	152(140)						
			5.0%	117(105)	117(105)	117(105)	122(110)						
GROUND SPEED		km/h	150	180	210	240	270	300	330	360	390	420	450
RATE OF DESCENT		m/s	2.0	2.5	2.9	3.3	3.7	4.1	4.5	4.9	5.3	5.7	6.1

**WARNING:**  
1. Heavy turbulence with down-draughts is expected on final.  
2. Distance measuring radio beacon gives values of DIST up to RWY 06 THR on frequency 111.1MHz.  
3. Strengthened part of CWY at RWY 06 THR is 75m.