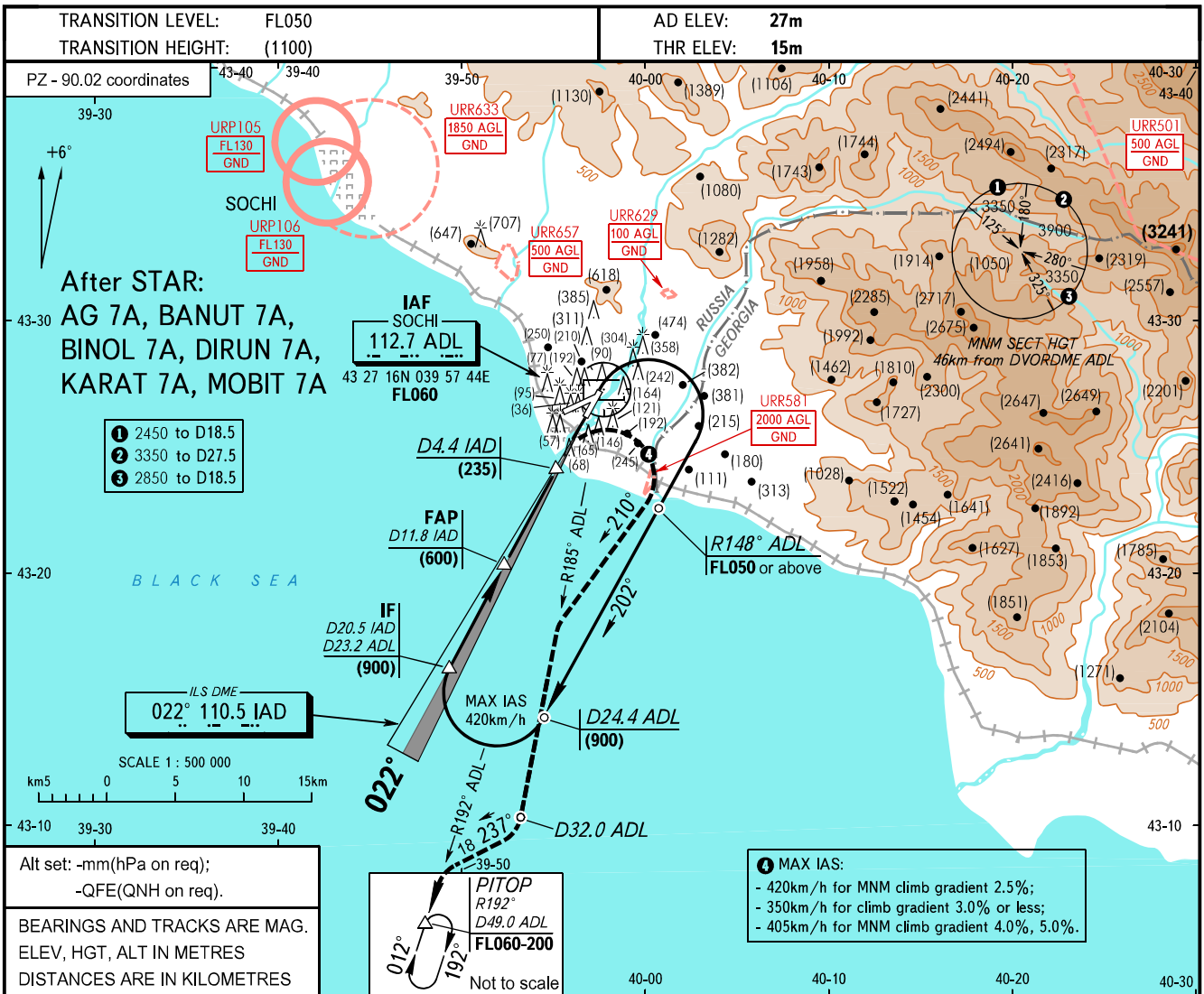


**INSTRUMENT
APPROACH
CHART - ICAO**

APPROACH	118.300
RADAR	119.700
TOWER	124.600

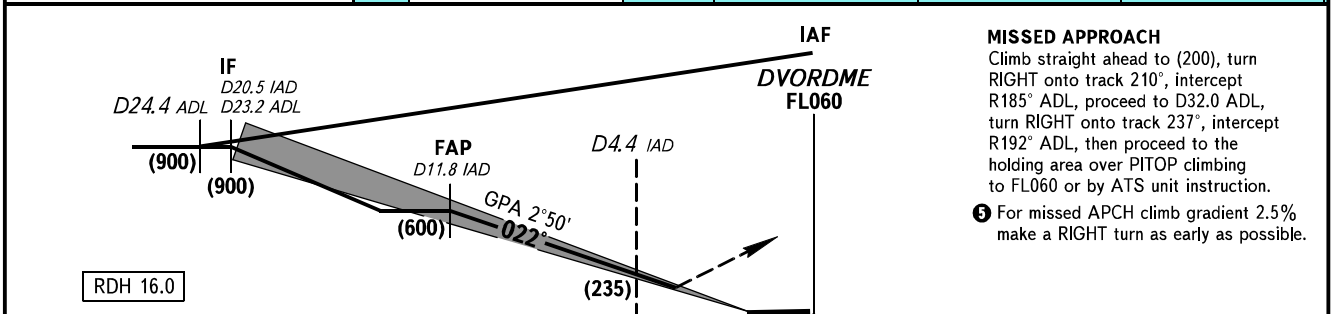
**SOCHI, RUSSIA
SOCHI
ILS DME RWY 02**



Alt set: -mm(hPa on req);
-QFE(QNH on req).

BEARINGS AND TRACKS ARE MAG.
ELEV, HGT, ALT IN METRES
DISTANCES ARE IN KILOMETRES

- 4** MAX IAS:
- 420km/h for MNM climb gradient 2.5%;
 - 350km/h for climb gradient 3.0% or less;
 - 405km/h for MNM climb gradient 4.0%, 5.0%.



MISSED APPROACH
Climb straight ahead to (200), turn RIGHT onto track 210°, intercept R185° ADL, proceed to D32.0 ADL, turn RIGHT onto track 237°, intercept R192° ADL, then proceed to the holding area over PITOP climbing to FL060 or by ATS unit instruction.

5 For missed APCH climb gradient 2.5% make a RIGHT turn as early as possible.

		OCA/H	A	B	C	D	
Straight-in Approach	ILS	MNM climb gradient for missed APCH	2.5%	246(230)	246(230)	246(230)	251(235)
		3.0%	206(190)	206(190)	211(195)	211(195)	
		4.0%	180(164)	180(164)	183(167)	186(170)	
		5.0%	170(154)	170(154)	173(157)	176(160)	

- WARNING:**
1. Heavy turbulence with down-draughts is expected on final.
 2. Deviation to the right is prohibited due to piers of transmission line up to 43.5m high at 200-500m from RWY centre line.
 3. Distance measuring radio beacon gives values of DIST up to RWY 02 THR on frequency 110.5MHz.
 4. Strengthened part of CWY at RWY 02 THR is 50m.

GROUND SPEED	km/h	150	180	210	240	270	300	330	360	390	420	450
RATE OF DESCENT	m/s	2.0	2.5	2.9	3.3	3.7	4.1	4.5	4.9	5.3	5.7	6.1