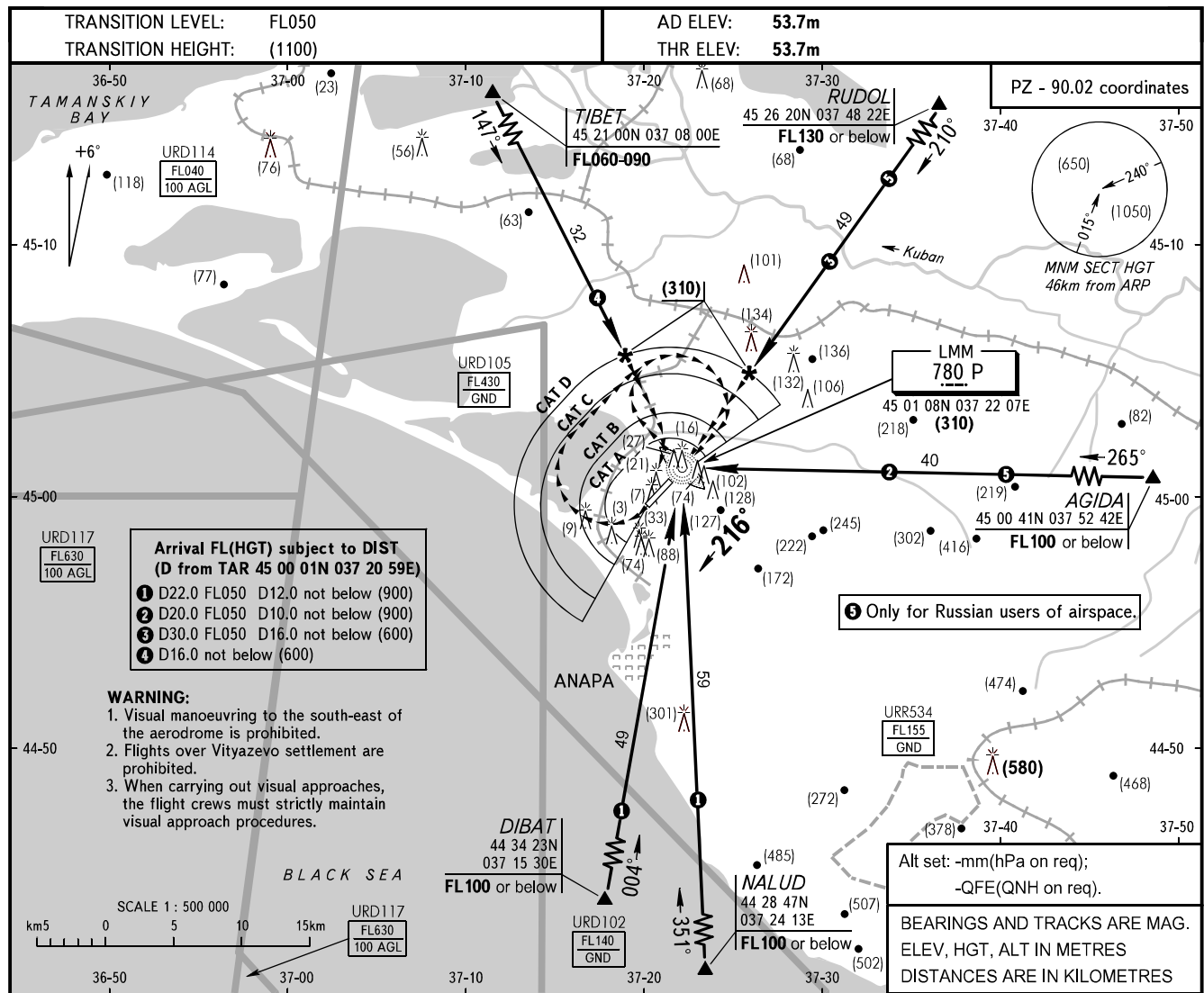


VISUAL
APPROACH
CHART - ICAO

KRUG 118.7

ANAPA, RUSSIA
VITYAZEVO
CIRCLING RWY 22



Arrival FL(HGT) subject to DIST (D from TAR 45 00 01N 037 20 59E)

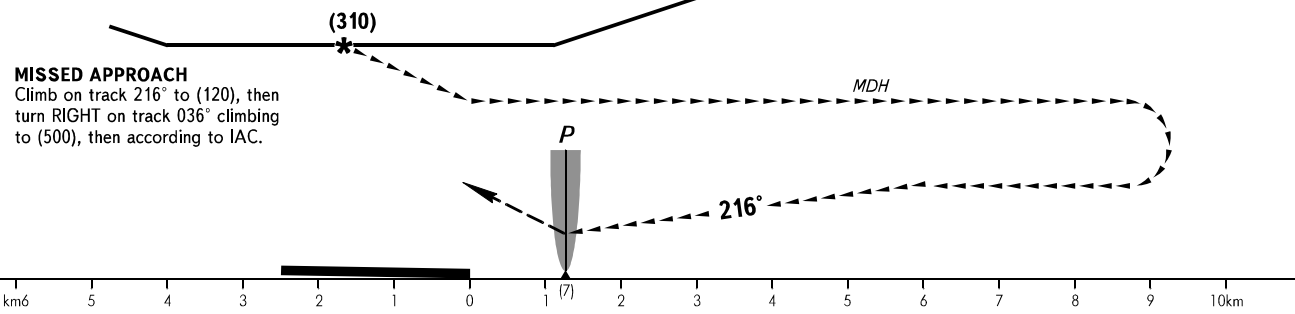
- 1 D22.0 FL050 D12.0 not below (900)
- 2 D20.0 FL050 D10.0 not below (900)
- 3 D30.0 FL050 D16.0 not below (600)
- 4 D16.0 not below (600)

- WARNING:**
1. Visual manoeuvring to the south-east of the aerodrome is prohibited.
 2. Flights over Vityazevo settlement are prohibited.
 3. When carrying out visual approaches, the flight crews must strictly maintain visual approach procedures.

5 Only for Russian users of airspace.

Alt set: -mm(hPa on req);
-QFE(QNH on req).

BEARINGS AND TRACKS ARE MAG.
ELEV, HGT, ALT IN METRES
DISTANCES ARE IN KILOMETRES



OCA/H		A	B	C	D	D-widebody
Visual Manoeuvring (Circling) Area	RWY 22	183(129)	204(150)	234(180)	271(217)	354(300)
ACFT CAT		A	B	C	D	D-widebody
MET conditions	MDH, m	130	150	180	220	300
	Cloud base, m	360	360	410	410	410
	Visibility, m	1600	2500	3000	4000	5000

WARNING
The radius of visual manoeuvring (circling) area for ACFT categories are as follows:
A - 3120m
B - 4980m
C - 7850m
D - 9790m