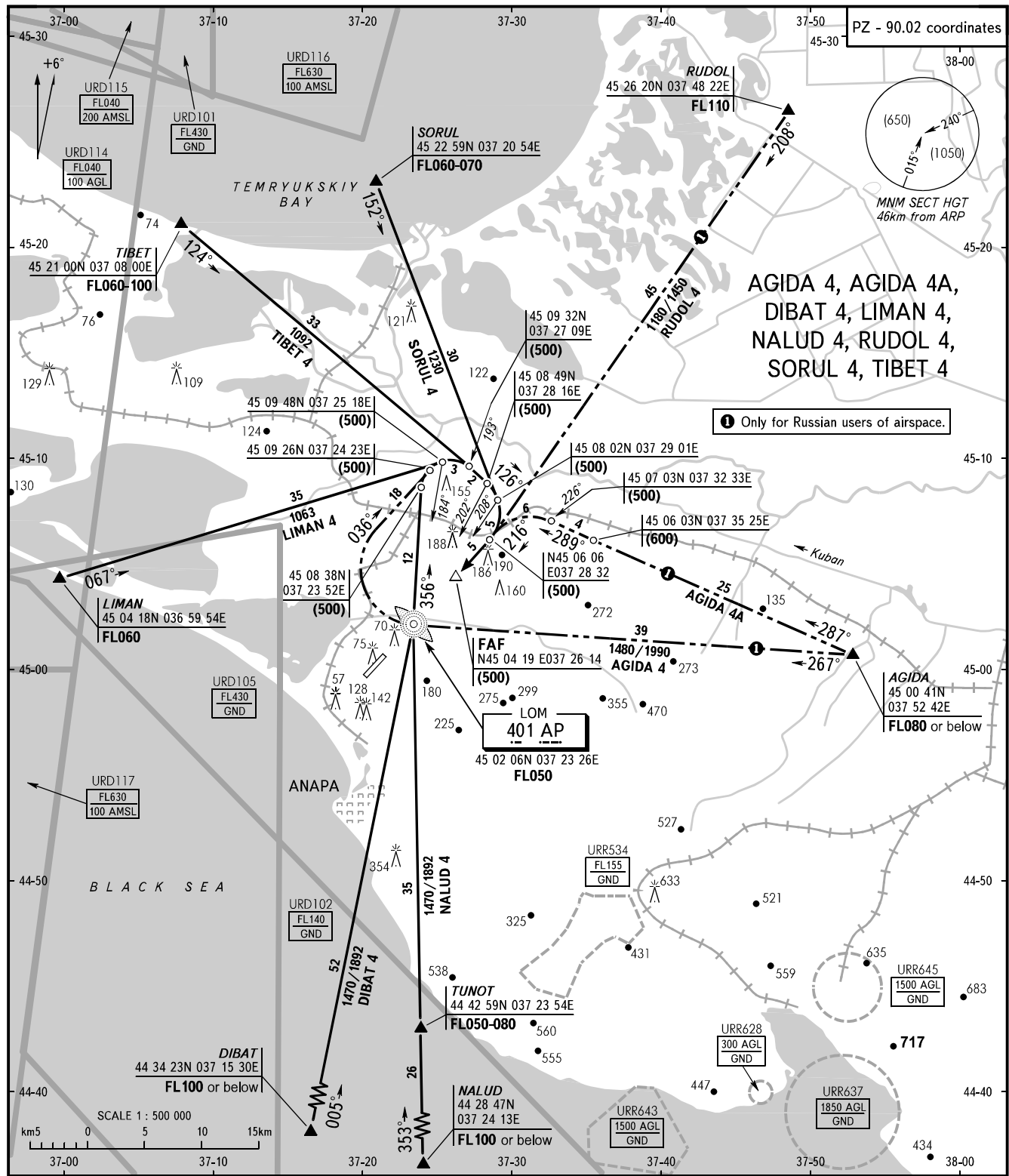


STANDARD ARRIVAL CHART
INSTRUMENT (STAR) - ICAO

TRANSITION
LEVEL : **FL050**

ANAPA, RUSSIA
VITYAZEVO
RWY 22



ROSTOV CONTROL (Serves as ANAPA APP at FL110 or above) **122.9**
KRUG (FL110 or below) **118.7**

WARNING:
1. FL by ATC.
2. Arrival and approach-to-land procedure till establishing on final shall be carried out under control of ATC controller.

BEARINGS AND TRACKS ARE MAGNETIC
ALTITUDES, HEIGHTS AND ELEVATIONS ARE IN METRES
DISTANCES ARE IN KILOMETRES

CHANGE: R areas, COORD, BRG