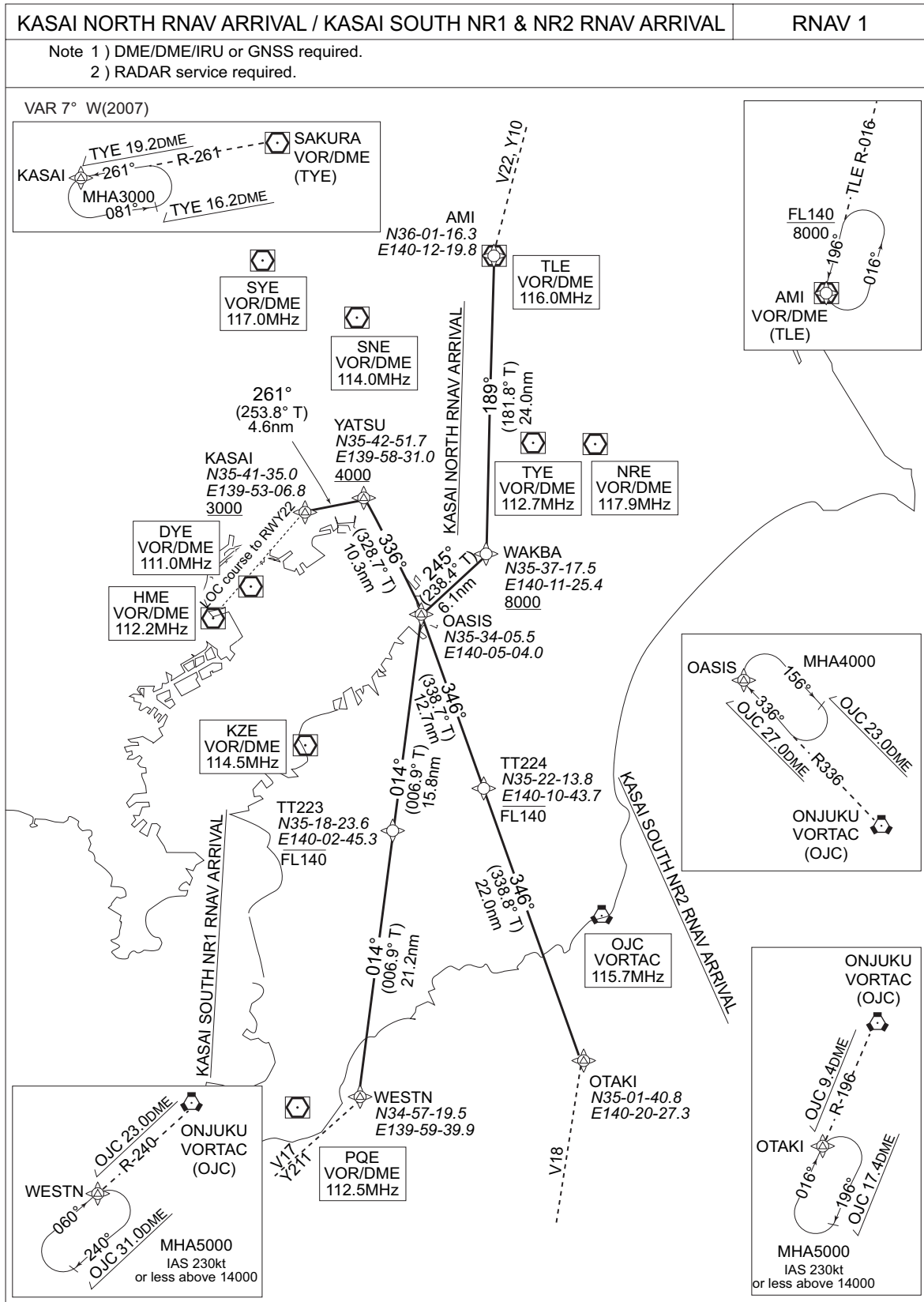


STANDARD ARRIVAL CHART-INSTRUMENT

RJTT / TOKYO INTL

RNAV STAR
RWY22



RJTT / TOKYO INTL

RNAV STAR
RWY22

KASAI NORTH RNAV ARRIVAL

From TLE, to WAKBA at or above 8,000ft, to OASIS, to YATSU, at or above 4,000ft, to KASAI at or above 3,000ft.

FIX	DESIGNATION	COORDINATES
	AMI (TLE)	360116.3N 1401219.8E
	WAKBA	353717.5N 1401125.4E
	OASIS	353405.5N 1400504.0E
	YATSU	354251.7N 1395831.0E
KASAI	354135.0N 1395306.8E	
Critical DME	-	
DME GAP	-	
Inappropriate Nav aids	See General Rule 3. Inappropriate NAVAIDs for RNAV1	

Rcmd. Path Terminator	Fix ID (Waypoint Name)	Fly Over	Distance (NM)	MAG Track (TRUE Track)	Turn Direction	Altitude (ft.)	Speed Limit (kt)	Vertical Angle	Navigation Performance
IF	TLE	-	-	-	-	-	-	-	RNAV1
TF	WAKBA	-	24.0	189° (181.8°)	-	+8000	-	-	RNAV1
TF	OASIS	-	6.1	245° (238.4°)	-	-	-	-	RNAV1
TF	YATSU	-	10.3	336° (328.7°)	-	+4000	-	-	RNAV1
TF	KASAI	-	4.6	261° (253.8°)	-	+3000	-	-	RNAV1

KASAI SOUTH NR1 RNAV ARRIVAL

From WESTN, to TT223 at or below FL140, to OASIS, to YATSU at or above 4,000ft, to KASAI at or above 3,000ft.

FIX	DESIGNATION	COORDINATES
	WESTN	345719.5N 1395939.9E
	TT223	351823.6N 1400245.3E
	OASIS	353405.5N 1400504.0E
	YATSU	354251.7N 1395831.0E
KASAI	354135.0N 1395306.8E	
Critical DME	-	
DME GAP	-	
Inappropriate Nav aids	See General Rule 3. Inappropriate NAVAIDs for RNAV1	

Rcmd. Path Terminator	Fix ID (Waypoint Name)	Fly Over	Distance (NM)	MAG Track (TRUE Track)	Turn Direction	Altitude (ft.)	Speed Limit (kt)	Vertical Angle	Navigation Performance
IF	WESTN	-	-	-	-	-	-	-	RNAV1
TF	TT223	-	21.2	014° (006.9°)	-	-FL140	-	-	RNAV1
TF	OASIS	-	15.8	014° (006.9°)	-	-	-	-	RNAV1
TF	YATSU	-	10.3	336° (328.7°)	-	+4000	-	-	RNAV1
TF	KASAI	-	4.6	261° (253.8°)	-	+3000	-	-	RNAV1

KASAI SOUTH NR2 RNAV ARRIVAL

From OTAKI, to TT224 at or below FL140, to OASIS, to YATSU at or above 4,000ft, to KASAI at or above 3,000ft.

FIX	DESIGNATION	COORDINATES
	OTAKI	350140.8N 1402027.3E
	TT224	352213.8N 1401043.7E
	OASIS	353405.5N 1400504.0E
	YATSU	354251.7N 1395831.0E
KASAI	354135.0N 1395306.8E	
Critical DME	-	
DME GAP	-	
Inappropriate Nav aids	See General Rule 3. Inappropriate NAVAIDs for RNAV1	

Rcmd. Path Terminator	Fix ID (Waypoint Name)	Fly Over	Distance (NM)	MAG Track (TRUE Track)	Turn Direction	Altitude (ft.)	Speed Limit (kt)	Vertical Angle	Navigation Performance
IF	OTAKI	-	-	-	-	-	-	-	RNAV1
TF	TT224	-	22.0	346° (338.8°)	-	-FL140	-	-	RNAV1
TF	OASIS	-	12.7	346° (338.7°)	-	-	-	-	RNAV1
TF	YATSU	-	10.3	336° (328.7°)	-	+4000	-	-	RNAV1
TF	KASAI	-	4.6	261° (253.8°)	-	+3000	-	-	RNAV1