

STANDARD DEPARTURE CHART-INSTRUMENT

RJTT / TOKYO INTL

TRANSITION

YAIZU TRANSITION

From over HYE VOR/DME,...

(for Z10,Z12)....via HYE R-255 to YZ NDB.

(for Y21)....via HYE R-255 to YZ NDB, then via 207 DEG from YZ NDB to CELLO.

(for A1)....via HYE R-255 to YZ NDB, then via 207 DEG from YZ NDB to BANJO.

(for W28, Y52)....via HYE R-255 to YZ NDB, then via 207 DEG from YZ NDB to SAKAK.

Cross HYE R-255/18.7DME at or above FL170, cross YZ NDB at assigned altitude.

Note : Aircraft unable to comply with altitude restrictions, inform TOKYO DELIVERY for alternate procedure when requesting ATC clearance.

OSHIMA TRANSITION

From over URAGA, proceed via KZE R-205 to HARIS, then via XAC R-054 to XAC VORTAC (233 DEG to XA NDB), or OSE R-069 to OSE VOR/DME as specified by ATC.

MIYAKE TRANSITION

From over URAGA, proceed via PQE R-357 to PQE VOR/DME, then via PQE R-204 to MOE VOR/DME or SCOTT.

TATEYAMA TRANSITION

From over URAGA, proceed via PQE R-357 to PQE VOR/DME, then via PQE R-189 to HCE VOR/DME (HC NDB) or SANGO.

MATSUMOTO TRANSITION

From over SEKID, via HME R-299....

(for W18, Y88) ....to KINPU.

(for KMC, TOE, V57) ....to MBE VOR/DME.

Cross HME R-299/32.0DME at or above FL170.

Cross KINPU at or above FL240 for proceeding to MBE VOR/DME.

## RJTT / TOKYO INTL

## TRANSITION

YOKOSUKA TRANSITION

From over HYE VOR/DME, via HYE R-263/XMC R-083 to XMC VORTAC via YUGAR and MARCO.

Cross YUGAR at or above FL170.

HAMAMATSU TRANSITION

From over HYE VOR/DME, via HYE R-255 to YZ NDB, then via 269 DEG from YZ NDB/LHE R-088 to LHE VOR/DME.

Cross HYE R-255/7DME at 5,000ft.

OCEAN TRANSITION

From over URAGA, via KZE R-205 to MIURA,...  
(for V17, V59, LHE VOR/DME)....via OJC R-265 to YZ NDB via OCEAN and SAGMI,  
then via 269DEG from YZ NDB/LHE R-088 to LHE  
VOR/DME.

(for Z10,Z12)....via OJC R-265 to YZ NDB via OCEAN and SAGMI.

(for Y21)....via OJC R-265 to YZ NDB via OCEAN and SAGMI, then via 207DEG  
from YZ NDB to CELLO.

(for A1)....via OJC R-265 to YZ NDB via OCEAN and SAGMI, then via 207DEG from  
YZ NDB to BANJO.

(for W28, Y52)....via OJC R-265 to YZ NDB via OCEAN and SAGMI, then via  
207DEG from YZ NDB to SAKAK.

Cross MIURA at or above 9,000ft, cross OCEAN at or above FL150, cross SAGMI at or  
above FL170, cross YZ NDB at assigned altitude.

Note : Aircraft unable to comply with altitude restrictions, inform TOKYO DELIVERY  
for alternate procedure when requesting ATC clearance.

OPPAR SOUTH TRANSITION

From over OPPAR, via HYE R-053 to HYE VOR/DME,....

(for Z10,Z12)....via HYE R-255 to YZ NDB.

(for Y21)....via HYE R-255 to YZ NDB, then via 207 DEG from YZ NDB to CELLO.

(for A1)....via HYE R-255 to YZ NDB, then via 207 DEG from YZ NDB to BANJO.

(for W28, Y52)....via HYE R-255 to YZ NDB, then via 207 DEG from YZ NDB to  
SAKAK.

Cross HYE VOR/DME at or above FL150, cross HYE R-255/18.7DME at or above  
FL170, cross YZ NDB at assigned altitude.

Note : Aircraft unable to comply with altitude restrictions, inform TOKYO DELIVERY for  
alternate procedure when requesting ATC clearance.

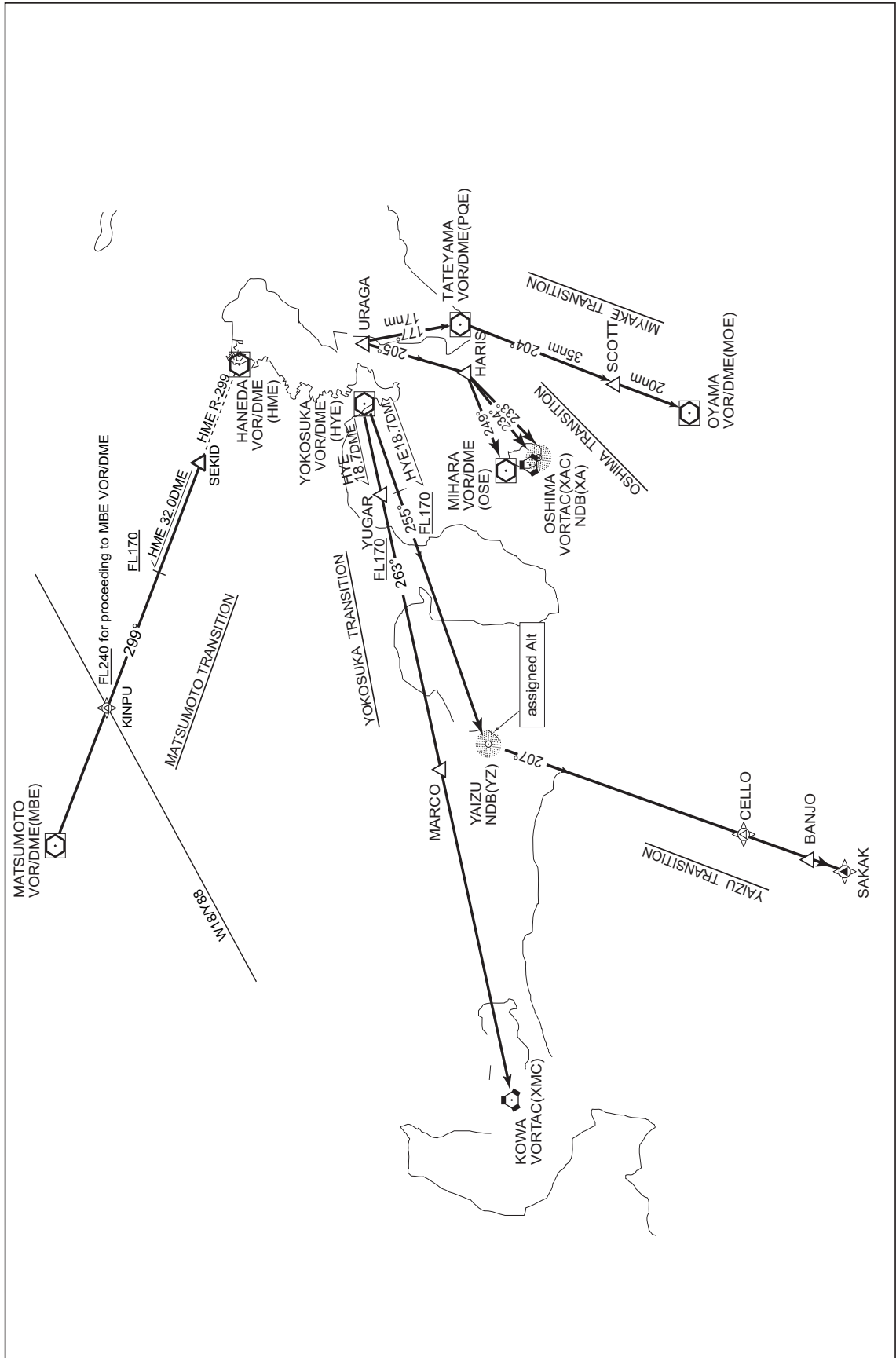
OPPAR WEST TRANSITION

From over OPPAR, via HYE R-053 to HYE VOR/DME, via HYE R-259/LHE R-079 to  
LHE VOR/DME.

Cross HYE VOR/DME at or above FL150, cross HYE R-259/18.7DME at or above

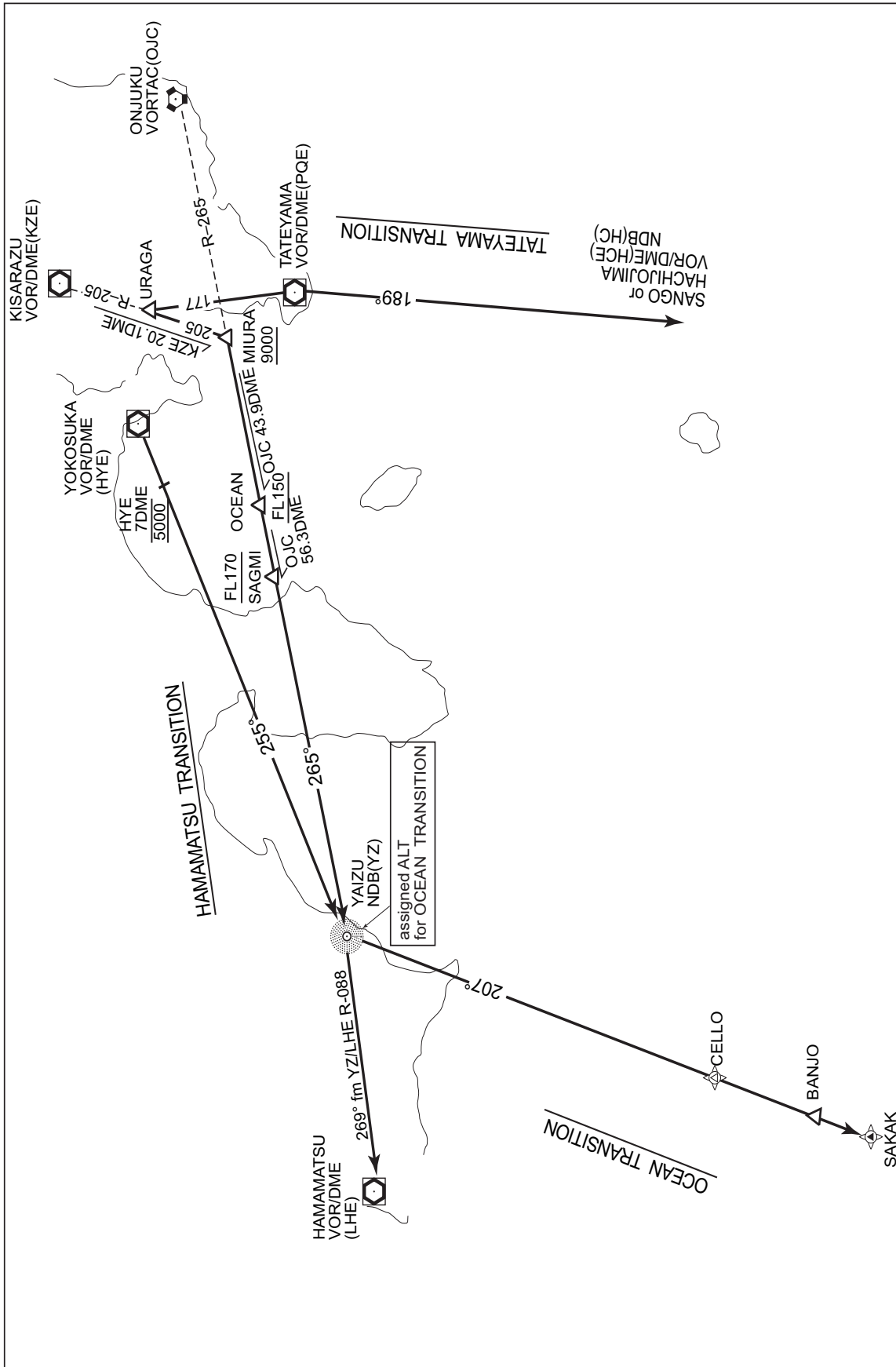
RJTT / TOKYO INTL

TRANSITION



RJTT / TOKYO INTL

TRANSITION



RJTT / TOKYO INTL

TRANSITION

