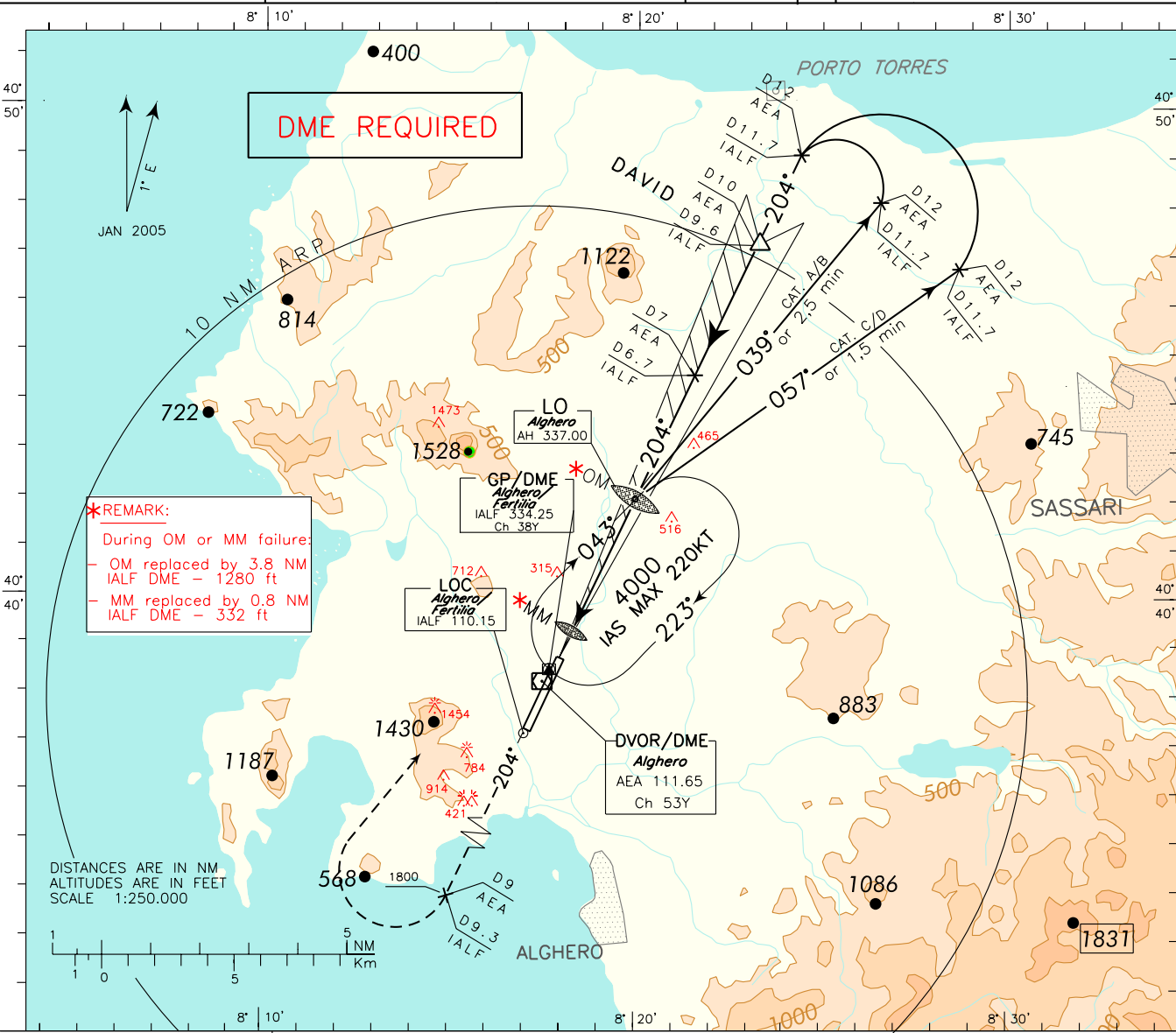


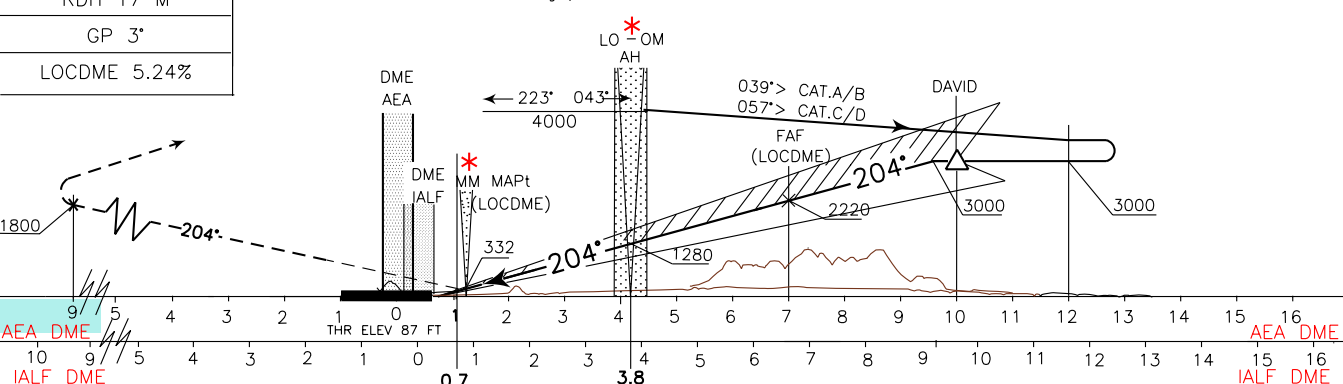
DOC 8168 ED 5 – 2006 AMDT 4

<p><b>WARNING:</b> During HN ± 30 min circling and landing for RWY 02 is forbidden.</p>	APP Alghero Approach 128.550	AD ELEV	LIEA	ALGHERO/FERTILIA
	TWR Alghero Tower 118.850	87		ILS-W



TRANSITION ALT 6000

MISSED APPROACH: Proceed on TR 204° climbing to 3000 ft. At 9 NM AEA DME or 9.3 NM IALF DME, to be crossed at 1800 ft or above, turn right to AH L to be reached at 3000 ft. Holding pattern IAS MAX 220 kt.



OCA(OCH)		A	B	C	D	<p><b>WARNING:</b> Due to obstacles not lighted S/W of the AD circling allowed only strictly EAST of the RWY</p>	FT PER MIN	GS	FAF-MAPT 6 NM	MAPT-THR 0.52 NM	THR	ALT (HGT)	MNM SECT ALT AEA VOR
STRAIGHT IN APPROACH	ILS	475(388)	485(398)	495(408)	505(418)		424	80	4 : 30	0 : 23	7	2310 (2223)	
	LOC/DME	600 (513)					530	100	3 : 36	0 : 19	6	1990 (1903)	
CIRCLING only east of RWY		700 (613)	1170(1083)	1360(1273)	742		140	2 : 34	0 : 13	4	1355 (1268)		
					848	160	2 : 15	0 : 12	3	1035 (948)			
					954	180	2 : 00	0 : 10	2	720 (633)			