

ICAO - INSTRUMENT APPROACH CHART

AD 2 LIEA 5-19

DOC 8168 ED 5 - 2006 AMDT 4

CHANGE: CIRCLING MINIMA "CAT A, B and C" MODIFIED

REMARKS:

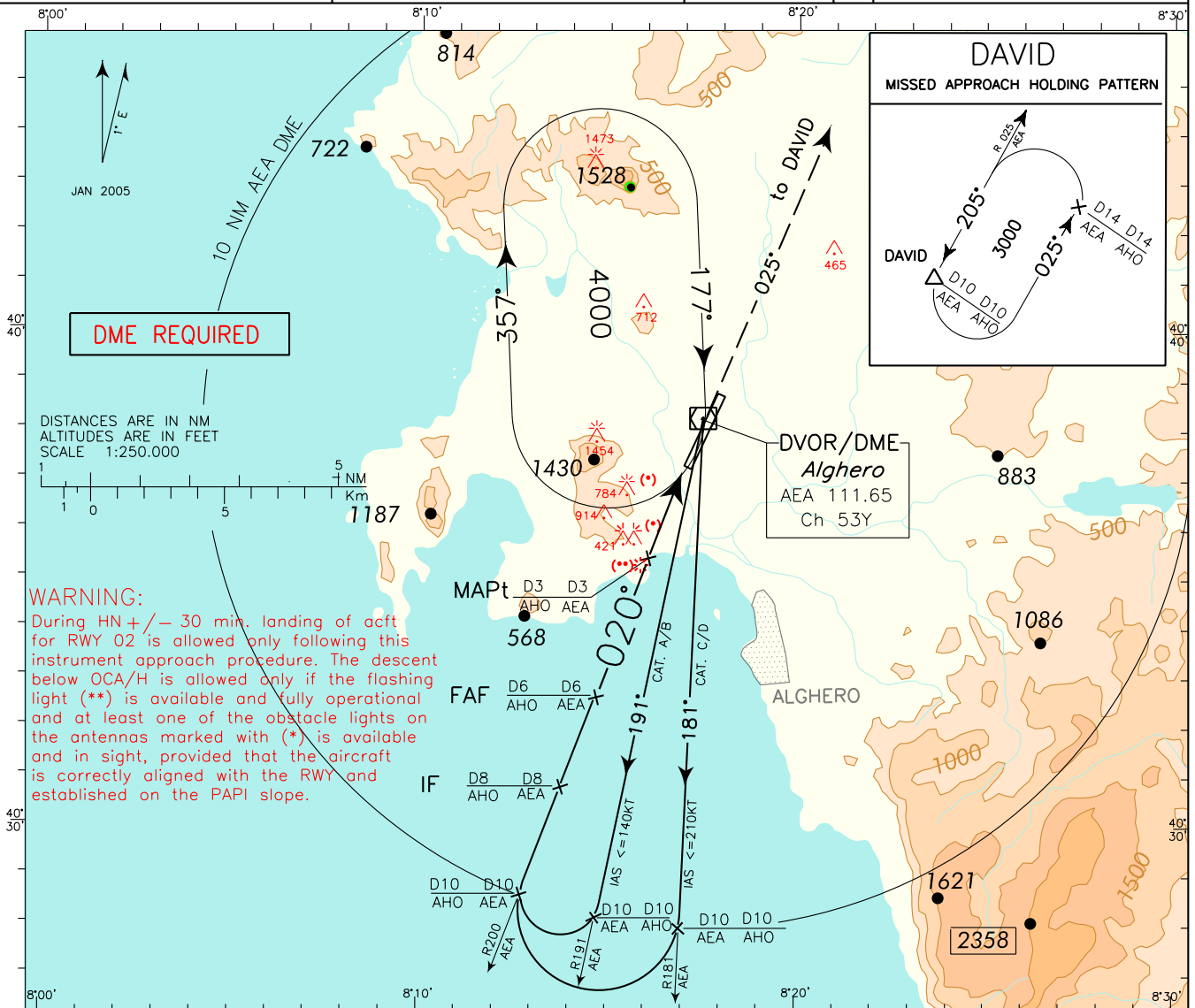
- Due to not lighted obstacles close to the THR penetrating Annex 14 approach surface, PAPI is compulsory. PAPI OCS not affected by the above obstacles.
- Final approach track 020° is offset 3'44" from RCL.

APP Alghero Approach 128.550
TWR Alghero Tower 118.850

AD ELEV
87

LIEA

ALGHERO/ FERTILIA
VOR-Y RWY 02

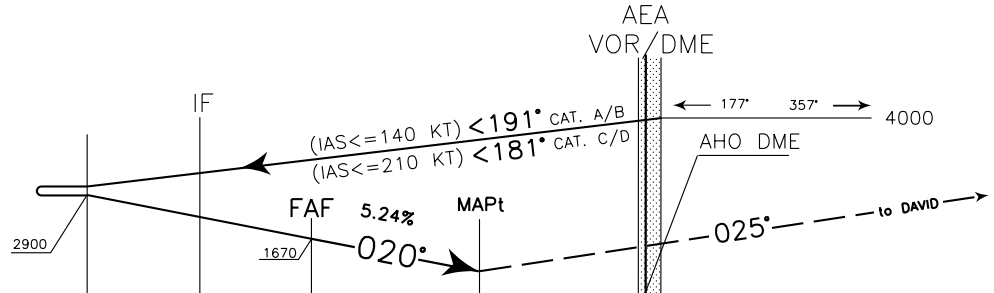


DISTANCES ARE IN NM
ALTITUDES ARE IN FEET
SCALE 1:250.000

WARNING:
During HN +/- 30 min. landing of acft for RWY 02 is allowed only following this instrument approach procedure. The descent below OCA/H is allowed only if the flashing light (**) is available and fully operational and at least one of the obstacle lights on the antennas marked with (*) is available and in sight, provided that the aircraft is correctly aligned with the RWY and established on the PAPI slope.

TRANSITION ALT 6000

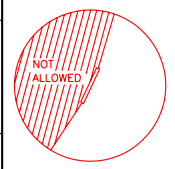
MISSED APPROACH: Climbing to 3000 ft, proceed to AEA VOR. Then join RDL 025 AEA VOR (TR 025°) bound to DAVID, to be reached at 3000 ft.



16	15	14	13	12	11	10	9	8	7	6	5	4	3	2	1	0	1	2	3	4	5	6	7
AEA DME													AHO DME										
15													14										
14													13										
13													12										
12													11										
11													10										
10													9										
9													8										
8													7										
7													6										
6													5										
5													4										
4													3										
3													2										
2													1										
1													0										
0													1										
1													2										
2													3										
3													4										
4													5										
5													6										
6													7										

OCA(OCH)		A	B	C	D
VOR		1100 (1032)			
STRAIGHT IN APPROACH	This procedure can be performed with the following meteorological minima:				
	<ul style="list-style-type: none"> ceiling 1500 ft or above; ground visibility not less than 5 Km; flight visibility not less than 5 Km by day and 8 Km by night 				
CIRCLING		1170 (1083)		1360(1273)	

WARNING:
CIRCLING ALLOWED ONLY EAST OF THE RWY. CIRCLING FOR RWY 02 IS FORBIDDEN DURING HN +/- 30 MIN.



GS	FT PER MIN	FAF-MAPt		MAPt-THR		DME AEA	ALT (HGT)
		3 NM	1.84 NM	1.84 NM	1.84 NM		
80	424	2 : 15	1 : 23	8	2300 (2232)		
100	530	1 : 48	1 : 06	7	2000 (1932)		
120	636	1 : 30	0 : 55	6	1670 (1602)		
140	742	1 : 17	0 : 47	5	1350 (1282)		
160	848	1 : 08	0 : 41	4	1030 (962)		
180	954	1 : 00	0 : 37	3	705 (637)		

