

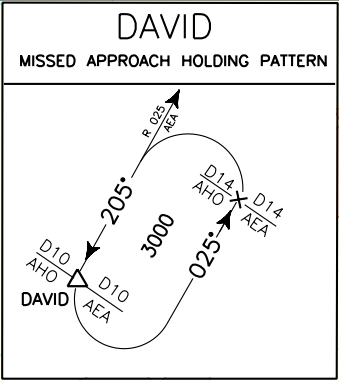
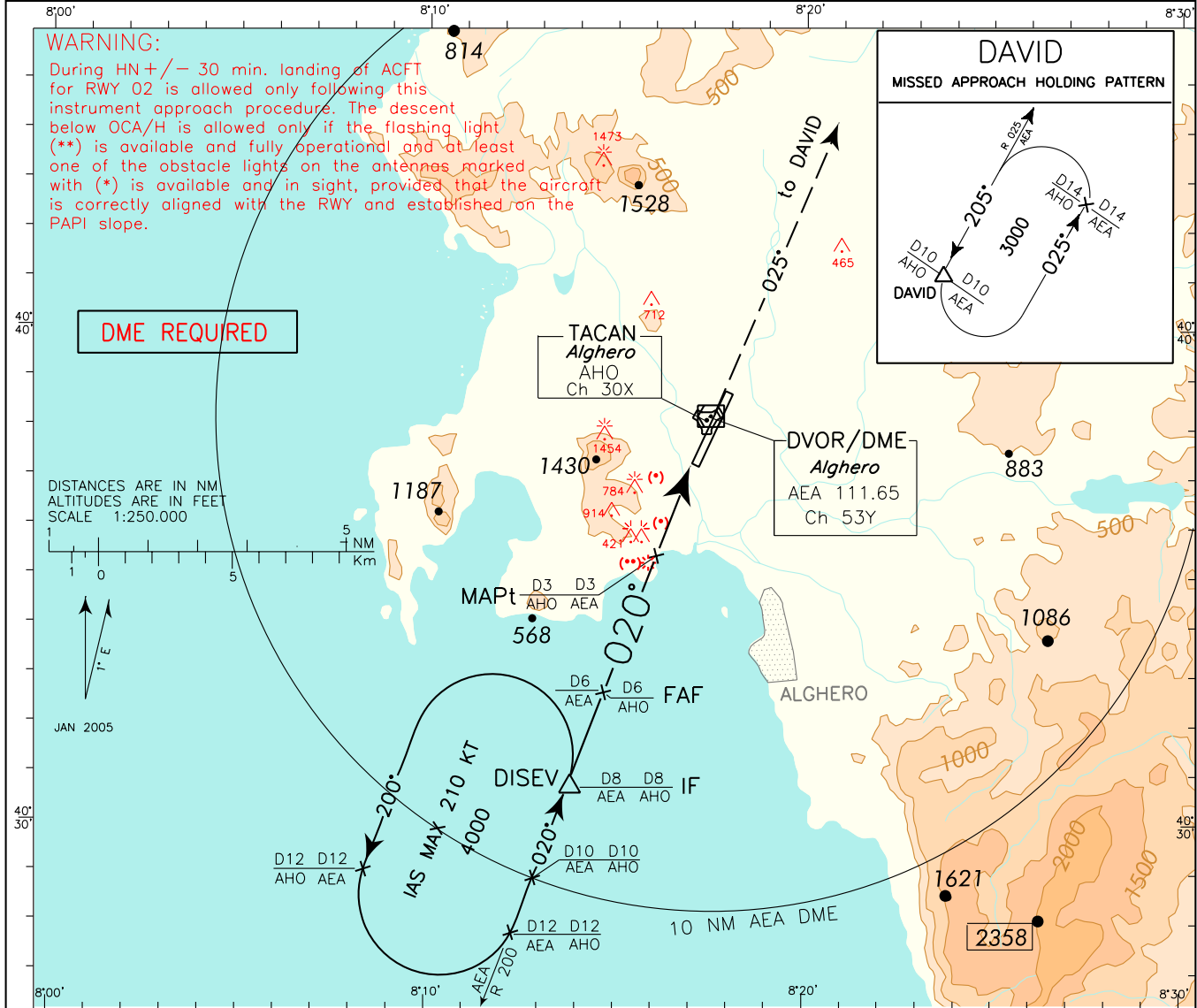
ICAO - INSTRUMENT APPROACH CHART

AD 2 LIEA 5-17

DOC 8168 ED 5 - 2006 AMDT 4

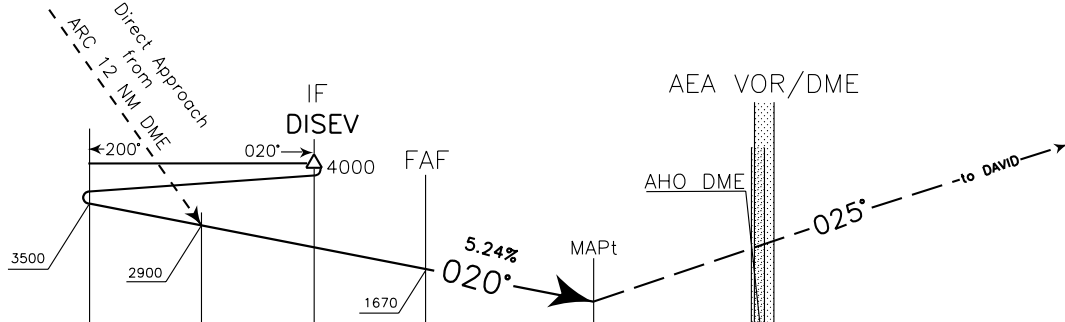
CHANGE: CIRCLING MINIMA "CAT A, B and C" MODIFIED

<b>REMARKS:</b> 1. Due to not lighted obstacles close to the THR penetrating Annex 14 approach surface, PAPI is compulsory. PAPI OCS not affected by the above obstacles. 2. Final approach track 020° is offset 3'44" from RCL.	APP <i>Alghero Approach</i> 128.550 TWR <i>Alghero Tower</i> 118.850	AD ELEV 87	LIEA ALGHERO/ FERTILIA VOR-Z RWY 02
--	---	---------------	---



TRANSITION ALT 6000

MISSED APPROACH: Climbing to 3000 ft, proceed to AEA VOR. Then join RDL 025 AEA VOR (TR 025°) bound to DAVID, to be reached at 3000 ft.



AEA DME	15	14	13	12	11	10	9	8	7	6	5	4	3	2	1	0	1	2	3	4	5	6	AEA DME
AHO DME																							
NM	15	14	13	12	11	10	9	8	7	6	5	4	3	2	1	0	1	2	3	4	5	6	NM

STRAIGHT IN APPROACH	VOR	A	B	C	D	WARNING: CIRCLING ALLOWED ONLY EAST OF THE RWY. CIRCLING FOR RWY 02 IS FORBIDDEN DURING HN +/- 30 MIN.	GS	FT PER MIN	FAF-MAPT	MAPt-THR	AEA DME AHO DME	ALT (HGT)	MNM SECT ALT AEA VOR
									3 NM	1.84 NM			
CIRCLING	This procedure can be performed with the following meteorological minima: - ceiling 1500 ft or above; - ground visibility not less than 5 km; - flight visibility not less than 5 km by day and 8 km by night	1170 (1083)		1360(1273)			80	424	2 : 15	1 : 23	8	2300 (2232)	
		1100 (1032)					100	530	1 : 48	1 : 06	7	2000 (1932)	
							120	636	1 : 30	0 : 55	6	1670 (1602)	
							140	742	1 : 17	0 : 47	5	1350 (1282)	
						160	848	1 : 08	0 : 41	4	1030 (962)		
						180	954	1 : 00	0 : 37	3	705 (637)		