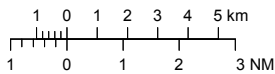


VISUAL APPROACH CHART – ICAO

1:250000



AD ELEV 137 FEET

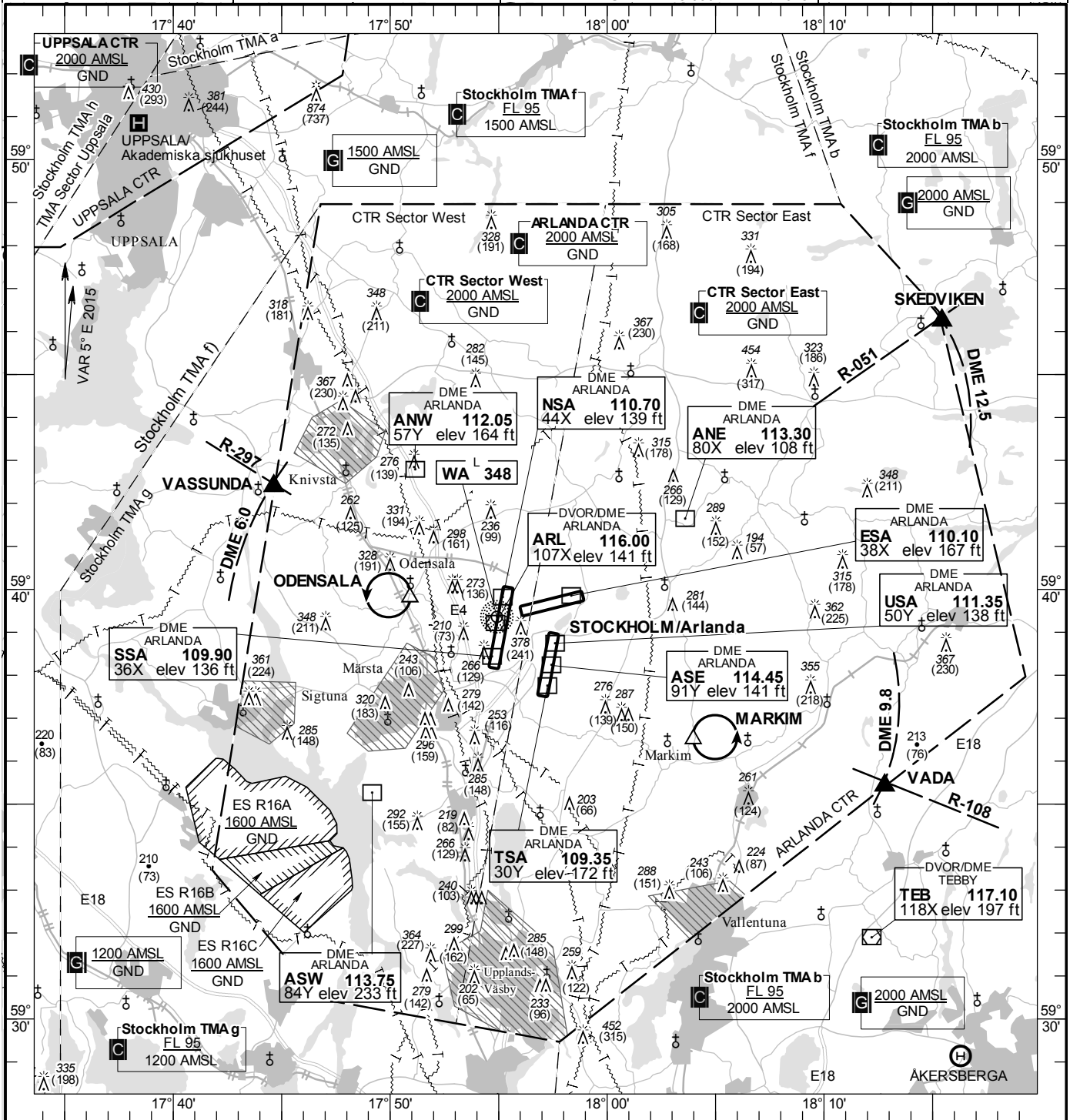
ELEV and ALT in ft
HGT in ft above AD ELEV

TA 5000 AMSL

ARLANDA TOWER
118.500 125.125 128.725 123.100
ARLANDA GROUND
121.700 121.975 121.925
ARLANDA CLR DELIVERY 121.825
STOCKHOLM CONTROL 123.750
ARLANDA ATIS ARR 119.000 **DEP** 121.625

AD 2 ESSA 6-1

STOCKHOLM/Arlanda SWEDEN



Communication failure

Aircraft with Communication failure is not allow to enter Arlanda CTR.
In case of Communication failure proceed to aerodrome outside Arlanda CTR.

Remark

Note: Noise sensitive area should be avoided below 2000 ft AMSL

Legend

See GEN 2.3

RWY NR	THR ELEV	PAPI (MEHT)
01L	98.1 ft	Left/3.00° (61 ft)
19R	117.6 ft	Left/3.00° (56 ft)
01R	137.4 ft	Right/3.00° (57 ft)
19L	98.4 ft	Left/3.00° (57 ft)
08	108 ft	Left/3.00° (56 ft)
26	124.3 ft	Left/3.00° (60 ft)

Entry / exit point

SKEDVIKEN 594614N 0181526E
VADA 593525N 0181248E
VASSUNDA 594223N 0174438E

Holding

ODENSALA: Hold at Odensala Church, west of point 593948N 0175054E
MARKIM: Hold at Markim Church, east of point 593630N 0180359E