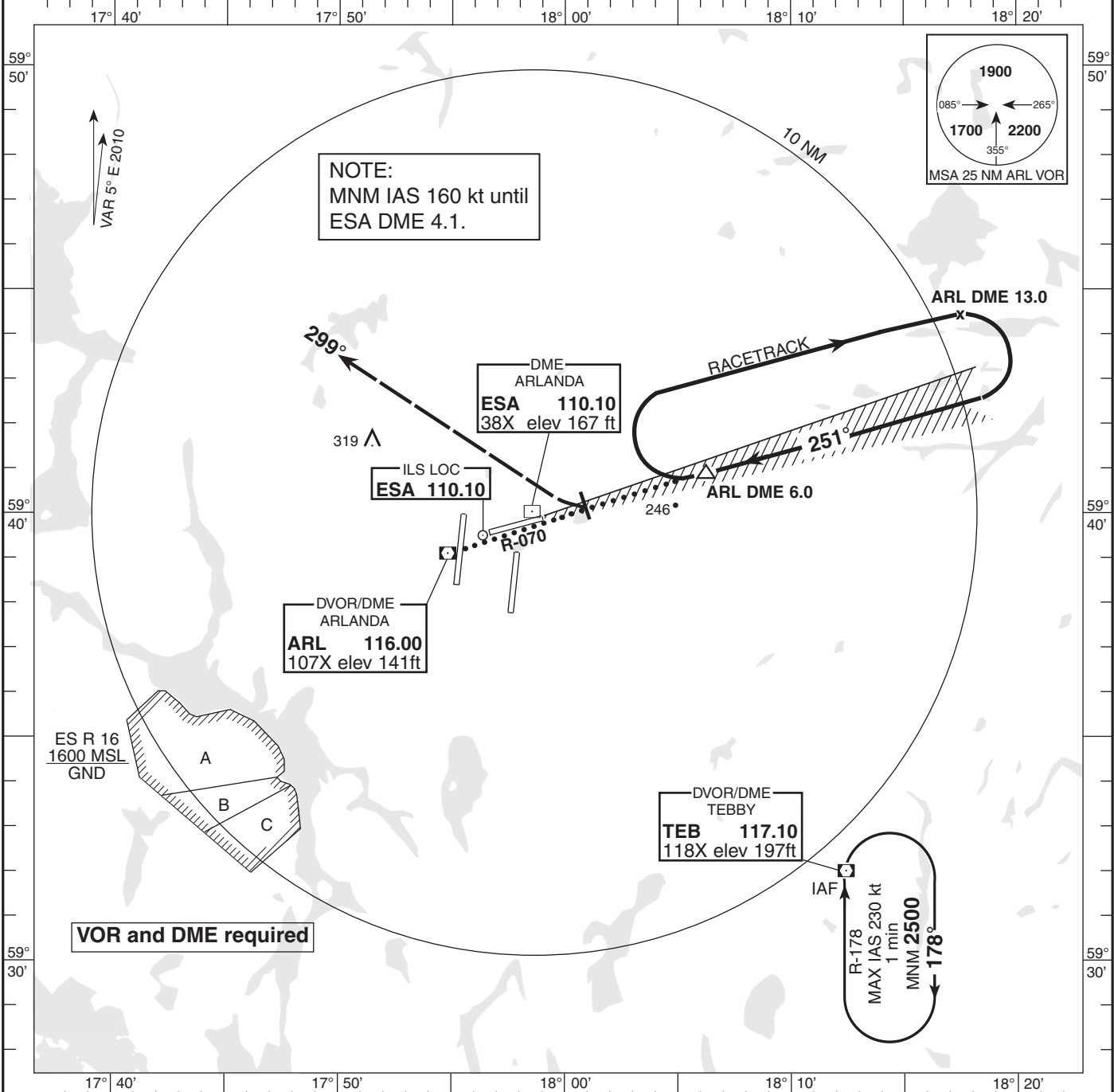
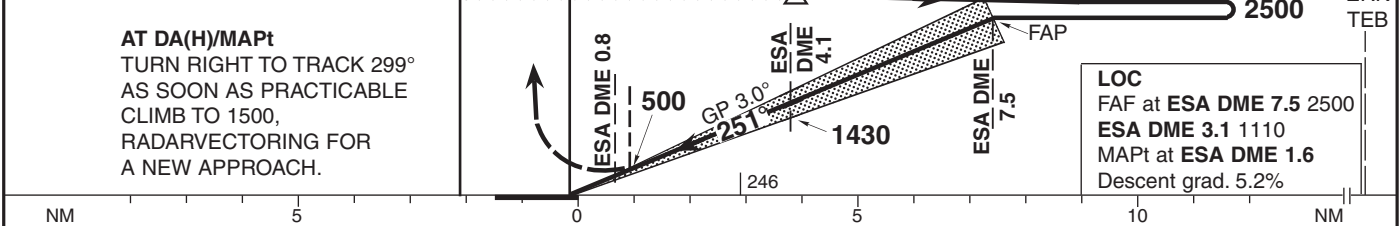


INSTRUMENT APPROACH CHART-ICAO 1:250 000 	THR ELEV 124 ft, AD ELEV 137 ft HGT are related to THR. Circling HGT are related to AD ELEV. BRG are MAG. ALT, HGT and ELEV in ft.	ARLANDA TOWER 128.725/118.500/125.125 ATIS ARR 119.000 STOCKHOLM CONTROL 123.750	AD 2-ESSA-5-5 ILS or LOC RWY 26 STOCKHOLM/ARLANDA SWEDEN
--	---	---	---



TRANSITION ALTITUDE 5000 MSL | ILS RDH (53) | PAPI GP 3.0° (5.2%) | SPECIAL COM FAILURE PROCEDURES SEE ESSA AD 2.22
 * TIMING NOT AUTHORIZED FOR DEFINING THE MAPt | MISSED APCH TURN LIMITED TO MAX IAS 185 KT

OM replaced by ESA DME 4.1
 MM replaced by ESA DME 0.8



AT DA(H)/MAPt
 TURN RIGHT TO TRACK 299°
 AS SOON AS PRACTICABLE
 CLIMB TO 1500,
 RADARVECTORED FOR
 A NEW APPROACH.

LOC
 FAF at ESA DME 7.5 2500
 ESA DME 3.1 1110
 MAPt at ESA DME 1.6
 Descent grad. 5.2%

OCA (H)					Final approach					LOC Distance FAF-MAPt 5.9 NM *					
Cat of ACFT	A	B	C	D	DME ESA NM	7	6	5	4	3	4	3	2	1	
Straight-in	Cat I	430 (310)	460 (340)	490 (370)	500 (380)	2350 (2230)	2030 (1910)	1710 (1590)	1390 (1270)	1080 (950)	140	160	180		
	LOC	500 (380)				Speed	kt	80	100	120	140	160	180		
						Rate of descent	ft/min	425	530	635	745	850	955		