

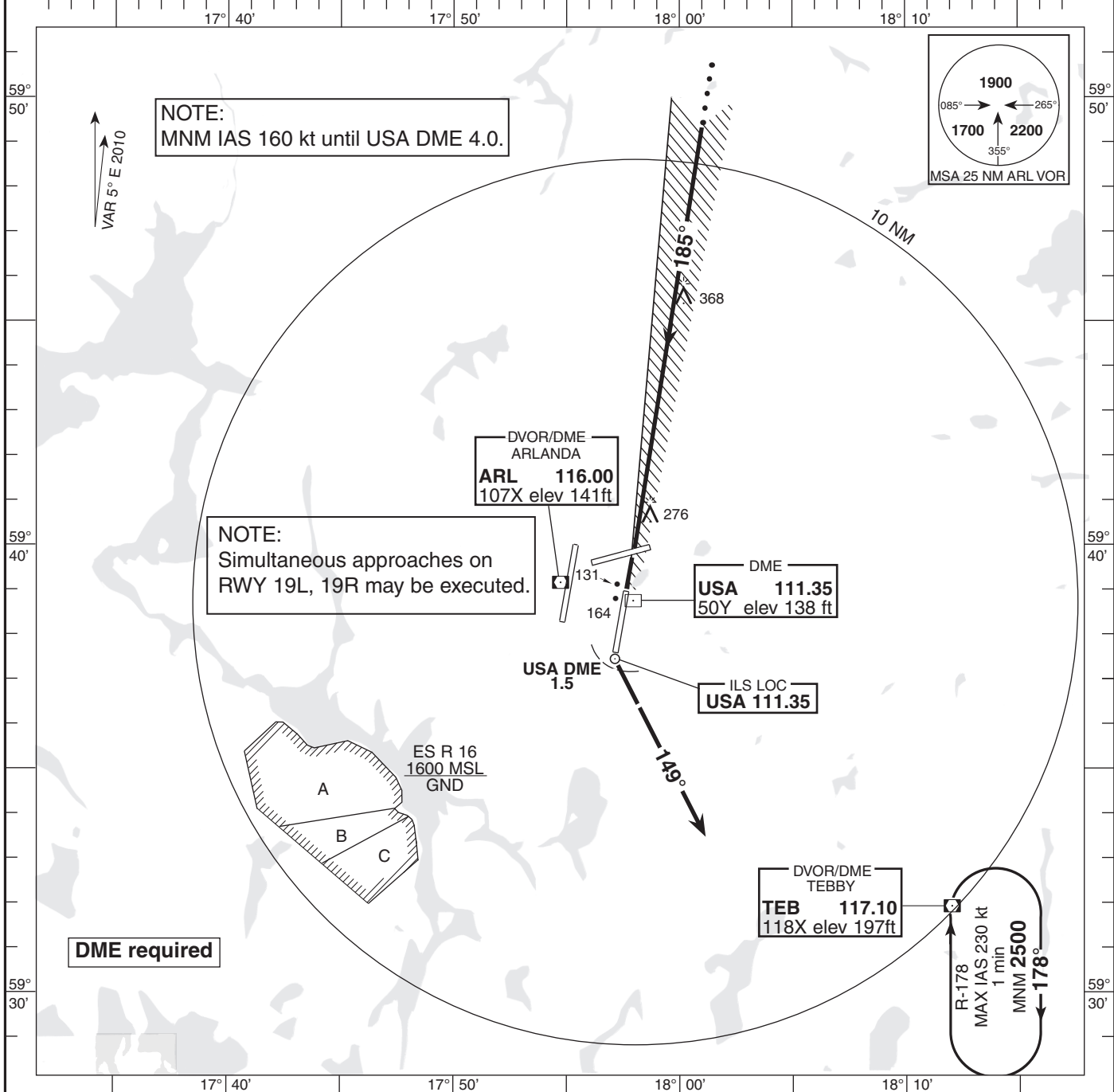
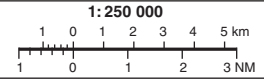
AD 2-ESSA-5-4

ARLANDA TOWER 125.125/
118.500/128.725
ATIS ARR 119.000
STOCKHOLM CONTROL 123.750

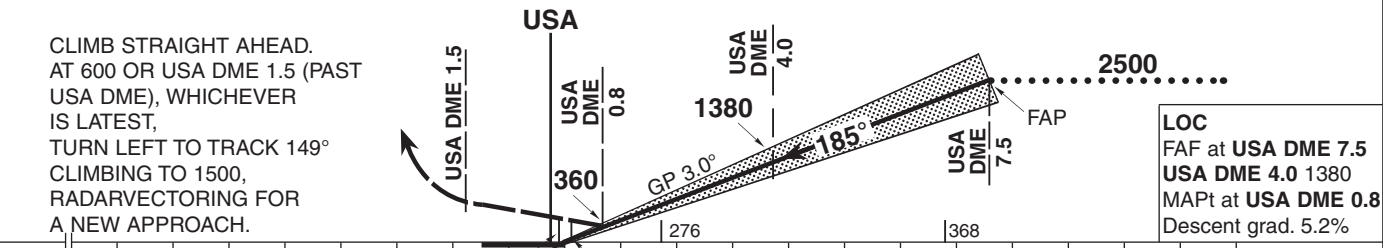
THR ELEV 98 ft, AD ELEV 137 ft
HGT are related to THR.
Circling HGT are related to AD ELEV.
BRG are MAG.
ALT, HGT and ELEV in ft.

INSTRUMENT
APPROACH CHART-ICAO

ILS or LOC RWY 19L
STOCKHOLM/ARLANDA
SWEDEN



TRANSITION ALTITUDE 5000 MSL ILS RDH (51) PAPI GP 3.0° (5.2%) SPECIAL COM FAILURE PROCEDURES SEE ESSA AD 2.22
*TIMING NOT AUTHORIZED FOR DEFINING THE MAPt OM replaced by USA DME 4.0, MM replaced by USA DME 0.8



Cat of ACFT	OCA (H)				Final approach LOC Distance FAF-MAPt 6.7 NM *						
	A	B	C	D	DME USA NM	7	6	5	4	3	2
Straight-in	249 (151)	258 (160)	270 (172)	282 (184)	ALT (HGT)	2330(2240)	2010(1920)	1700(1610)	1380(1290)	1060(970)	740(650)
LOC	163 (65)	172 (74)	182 (84)	194 (96)	Speed	kt	80	100	120	140	160
LOC SDF not received	500 (410)				Time	min:s	5:03	4:03	3:22	2:53	2:32
Cat III B APPROVED	620 (530)				Rate of decent	ft/min	425	535	640	745	850