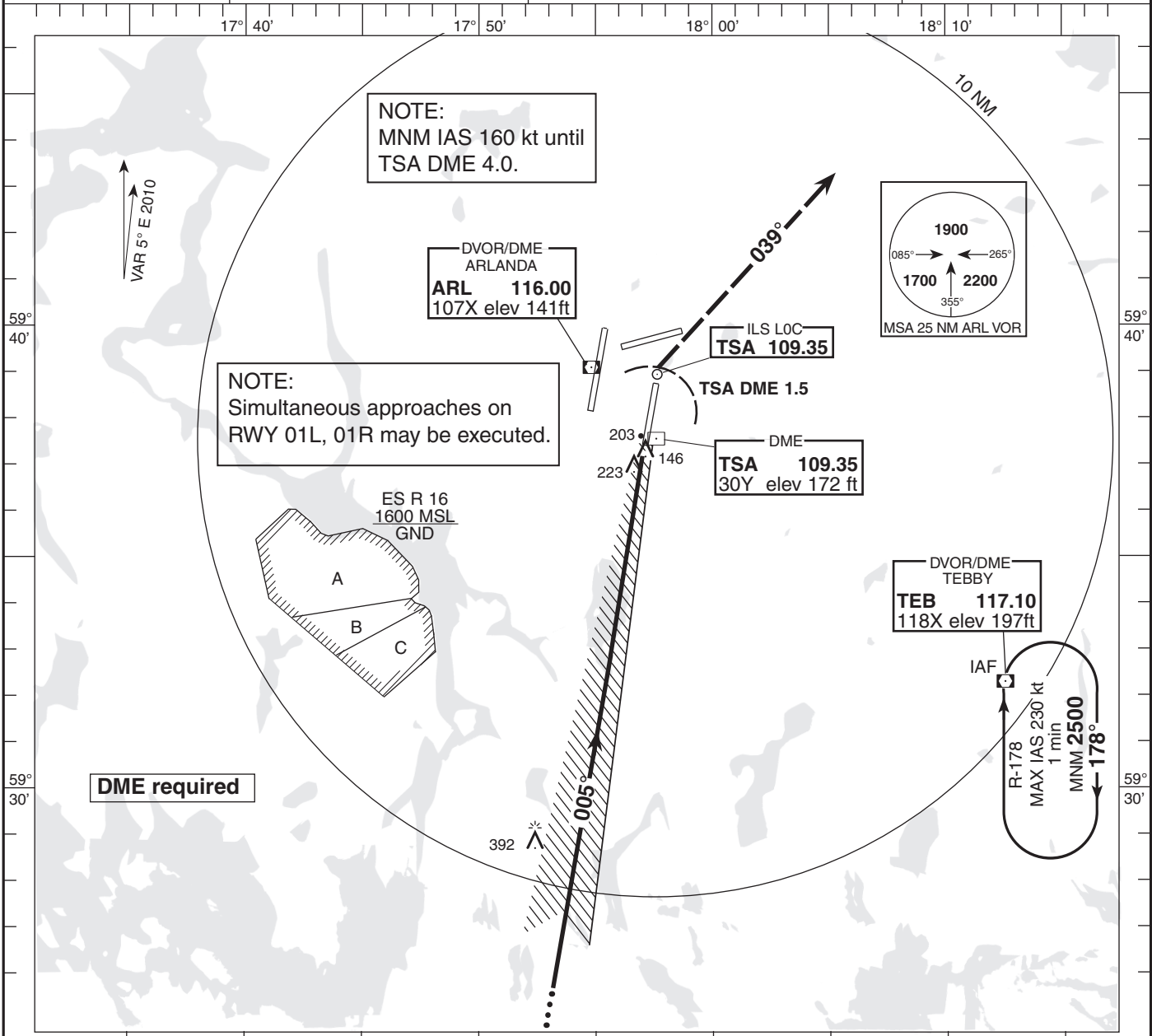
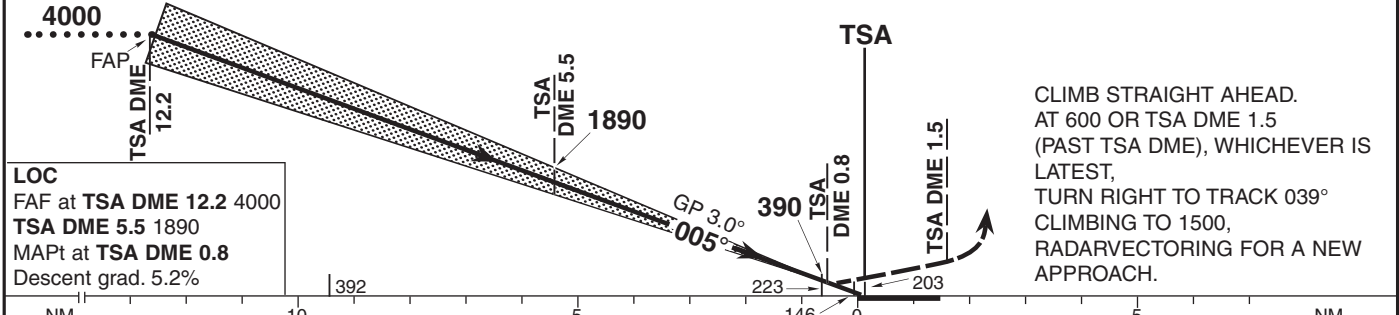


<b>INSTRUMENT APPROACH CHART-ICAO</b> 1:250 000 	<b>THR ELEV 137 ft, AD ELEV 137 ft</b> HGT are related to THR. Circling HGT are related to AD ELEV. BRG are MAG. ALT, HGT and ELEV in ft.	<b>ARLANDA TOWER 125.125/118.500/128.725</b> <b>ATIS ARR 119.000</b> <b>STOCKHOLM CONTROL 123.750</b>	<b>AD 2-ESSA-5-3</b> ILS or LOC RWY 01R STOCKHOLM/ARLANDA SWEDEN
--	---	---	---



TRANSITION ALTITUDE 5000 MSL | ILS RDH (51) | PAPI GP 3.0° (5.2%) | SPECIAL COM FAILURE PROCEDURES SEE ESSA AD 2.22 & COM FAILURE OM replaced by TSA DME 5.5, MM replaced by TSA DME 0.8 | TIMING NOT AUTHORIZED FOR DEFINING THE MAPt \* | CHART AD 2-ESSA 5-7



		Final approach LOC Distance FAF-MAPt 11.4 NM *											
		DME TSA NM		11		10		9		8		7	
		ALT (HGT)		3640 (3510)		3320 (3190)		3000 (2870)		2680 (2550)		2360 (2230)	
		Distance		6		5		4		3		2	
		ALT (HGT)		2050 (1920)		1730 (1600)		1410 (1280)		1090 (960)		770 (640)	
		Speed		kt		80		100		120		140	
		Time		min:s		8:31		6:49		5:41		4:52	
		Rate of descent		ft/min		425		535		640		745	
		Cat of ACFT		A		B		C		D			
		Straight-in		291(154)		302(165)		316(179)		331(194)			
		Cat II		194 (57)		205 (68)		220 (83)		238(101)			
		LOC		470 (340)									
		LOC SDF not received		640 (510)									
		Cat III B APPROVED											