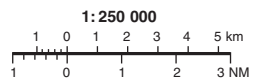


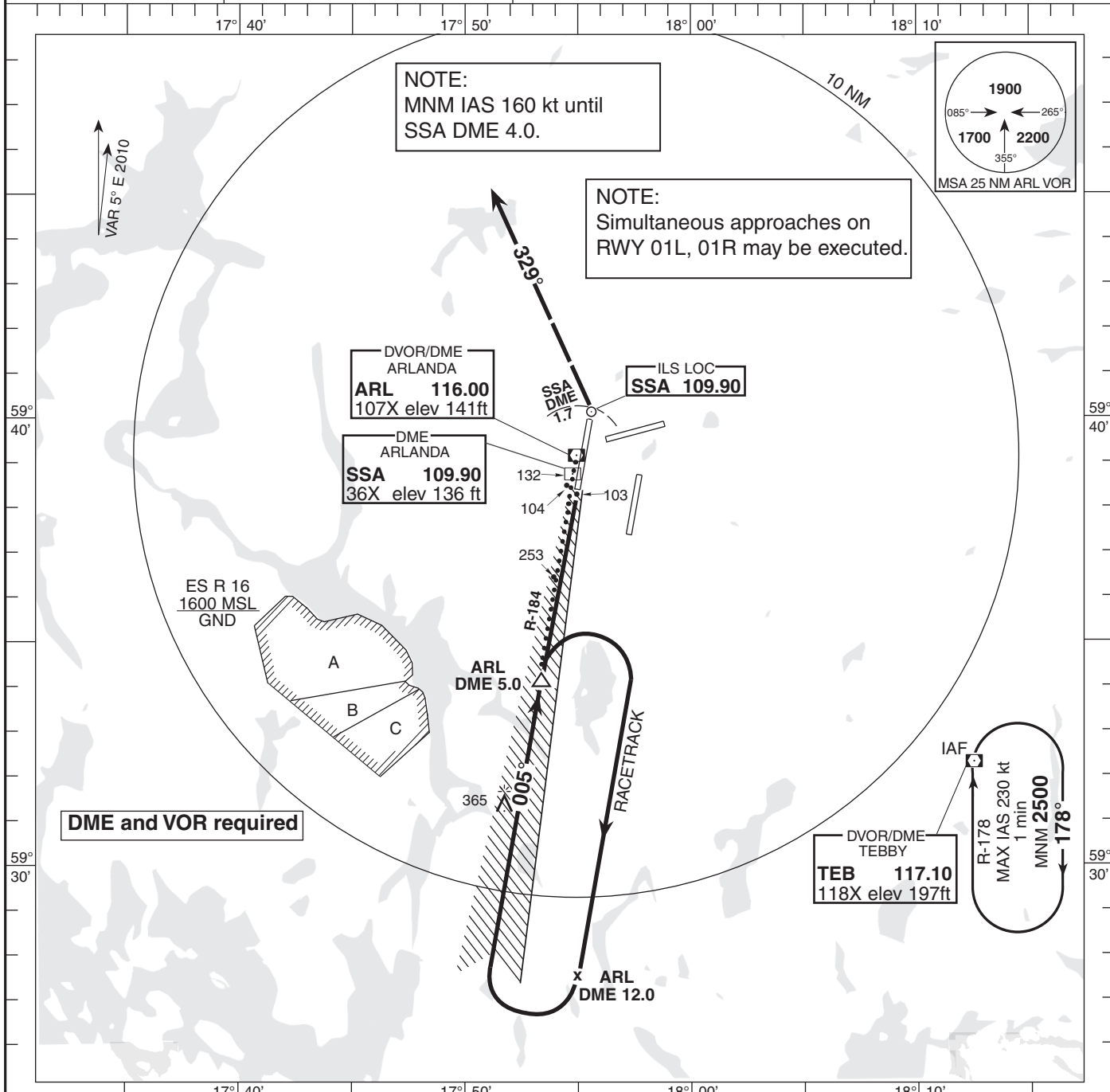
INSTRUMENT
APPROACH CHART-ICAO



THR ELEV 98 ft, AD ELEV 137 ft
HGT are related to THR.
Circling HGT are related to AD ELEV.
BRG are MAG.
ALT, HGT and ELEV in ft.

ARLANDA TOWER 118.500/
125.125/128.725
ATIS ARR 119.000
STOCKHOLM CONTROL 123.750

AD 2-ESSA-5-1
ILS or LOC RWY 01L
STOCKHOLM/ARLANDA
SWEDEN

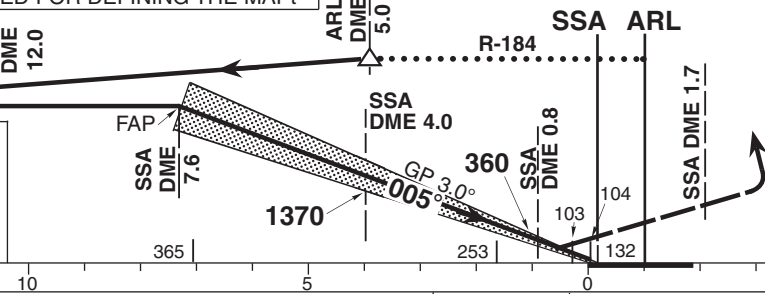


TRANSITION ALTITUDE 5000 MSL ILS RDH (56) PAPI GP 3.0° (5.2%) SPECIAL COM FAILURE PROCEDURES SEE ESSA AD 2.22

* TIMING NOT AUTHORIZED FOR DEFINING THE MAPt

OM replaced by SSA DME 4.0
MM replaced by SSA DME 0.8

LOC
FAF at SSA DME 7.6 2500
SSA DME 2.3 830
MAPt at SSA DME 0.8
Descent grad. 5.2%



NM 10 5 0 5 NM

Cat of ACFT	OCA (H)					Final approach LOC Distance FAF-MAPt 6.8 NM *							
	A	B	C	D	DL	DME SSA NM	7	6	5	4	3	2	
Straight-in	242 (144)	250 (152)	261 (163)	273 (175)	275 (177)	ALT (HGT)	2330(2240)	2010(1920)	1690(1600)	1370(1280)	1060(970)	740(650)	
Cat I	151 (53)	161 (63)	174 (76)	187 (89)	190 (92)	Speed	kt	80	100	120	140	160	180
Cat II						Time	min:s	5:04	4:03	3:23	2:54	2:32	2:15
LOC	500 (410)					Rate of decent	ft/min	425	535	640	745	850	960
LOC SDF not received	620 (530)												
Cat III B APPROVED													