

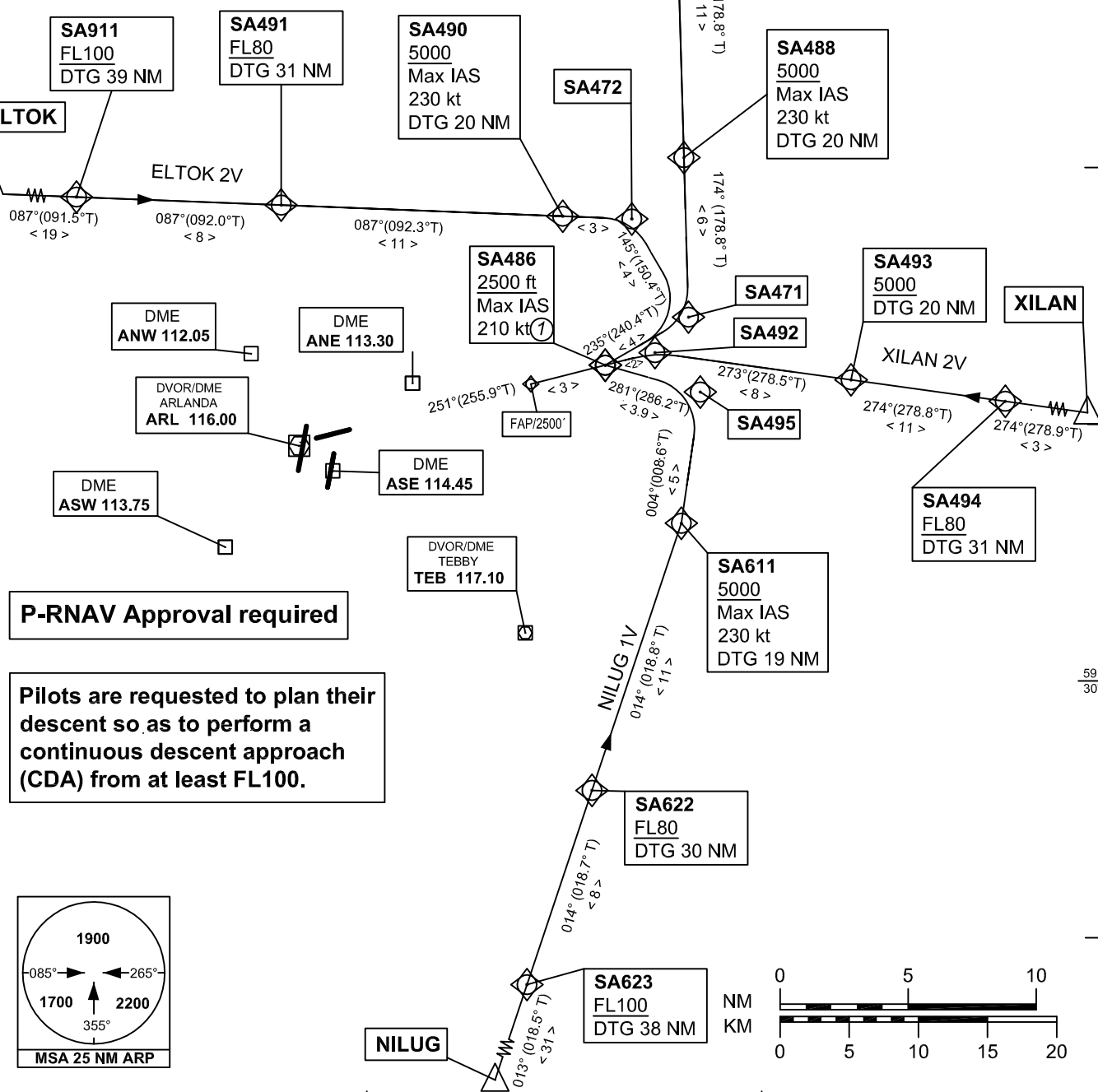
LEGEND

See GEN 2.3

BRG, Radials and Tracks are in MAG.
Tracks within brackets are in True.
ELEV and ALT in ft MSL

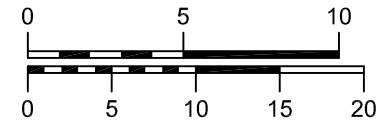
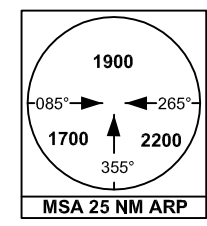
VAR 4° 5' E 2010

1
Max IAS 210 kt not valid
for STAR from XILAN.



P-RNAV Approval required

Pilots are requested to plan their descent so as to perform a continuous descent approach (CDA) from at least FL100.



P-RNAV STAR**STOCKHOLM/Arlanda
RWY 26****REMARK**

Note 1: Aircraft to STOCKHOLM/Arlanda shall not be operated at an airspeed of more than 250 kt IAS below FL100 unless otherwise instructed.

Note 2: When established on ILS final approach track, maintain 160 kt IAS or more until passing ESA DME 4.1, unless otherwise instructed. If unable, inform ATC immediately.

Note 3: In case of radio communication failure, see AD 2.22 para 3.

Note 4: Pilots are requested to plan their descent so as to perform a continuous descent approach (CDA) from at least FL100.

Prescribed Coding of P-RNAV STAR for RWY 26 at Stockholm/Arlanda (ESSA)

STAR	Path term	To fix	WPT desc	Hdg/ Course	Turn Dir	Rest Alts	Speed Limits
ELTOK2V (ELTO2V)	IF	ELTOK	E				
	TF	SA911	E			+FL100	
	TF	SA491	E			+FL80	
	TF	SA490	E			+5000	230
	TF	SA472	E				
	TF	SA471	E				
	TF	SA486	E			+2500	210
	TF	FAP26 ^{*)}	EE			2500	

STAR instruction: ELTOK – SA911 (FL100 or above) – SA491 (FL80 or above) – SA490 (max IAS 230 kt, 5000 ft or above) – SA472 – SA471 – SA486 (max IAS 210 kt, 2500 ft or above) – FAP26^{*)}

^{*)} Unnamed WPT, due to different coding/naming conventions at navdatabase suppliers.

STAR	Path term	To fix	WPT desc	Hdg/ Course	Turn Dir	Rest Alts	Speed Limits
HAMMAR2V (HMR2V)	IF	HMR	V				
	TF	SA496	E			+FL100	
	TF	SA489	E			+FL80	
	TF	SA488	E			+5000	230
	TF	SA471	E				
	TF	SA486	E			+2500	210
	TF	FAP26 ^{*)}	EE			2500	

STAR instruction: HMR – SA496 (FL100 or above) – SA489 (FL80 or above) – SA488 (max IAS 230 kt, 5000 ft or above) – SA471 – SA486 (max IAS 210 kt, 2500 ft or above) – FAP26^{*)}

^{*)} Unnamed WPT, due to different coding/naming conventions at navdatabase suppliers

Prescribed Coding of P-RNAV STAR for RWY 26 at Stockholm/Arlanda (ESSA)

STAR	Path term	To fix	WPT desc	Hdg/ Course	Turn Dir	Rest Alts	Speed Limits
NILUG1V (NILU1V)	IF	NILUG	E				
	TF	SA623	E			+FL100	
	TF	SA622	E			+FL80	
	TF	SA611	E			+5000	230
	TF	SA495	E				
	TF	SA486	E			+2500	210
	TF	FAP26 ^{*)}	EE			2500	

STAR instruction: NILUG – SA623 (FL100 or above) – SA622 (FL80 or above) – SA611 (max IAS 230 kt, 5000 ft or above) – SA495 – SA486 (max ISA 210 kt, 2500 ft or above) – FAP26^{*)}

^{*)} Unnamed WPT, due to different coding/naming conventions at navdatabase suppliers

STAR	Path term	To fix	WPT desc	Hdg/ Course	Turn Dir	Rest Alts	Speed Limits
XILAN2V (XILA2V)	IF	XILAN	E				
	TF	SA494	E			+FL80	
	TF	SA493	E			+5000	
	TF	SA492	E				
	TF	SA486	E			+2500	
	TF	FAP26 ^{*)}	EE			2500	

STAR instruction: XILAN – SA494 (FL80 or above) – SA493 (5000 ft or above) – SA492 – SA486 (2500 ft or above) – FAP26^{*)}

^{*)} Unnamed WPT, due to different coding/naming conventions at navdatabase suppliers