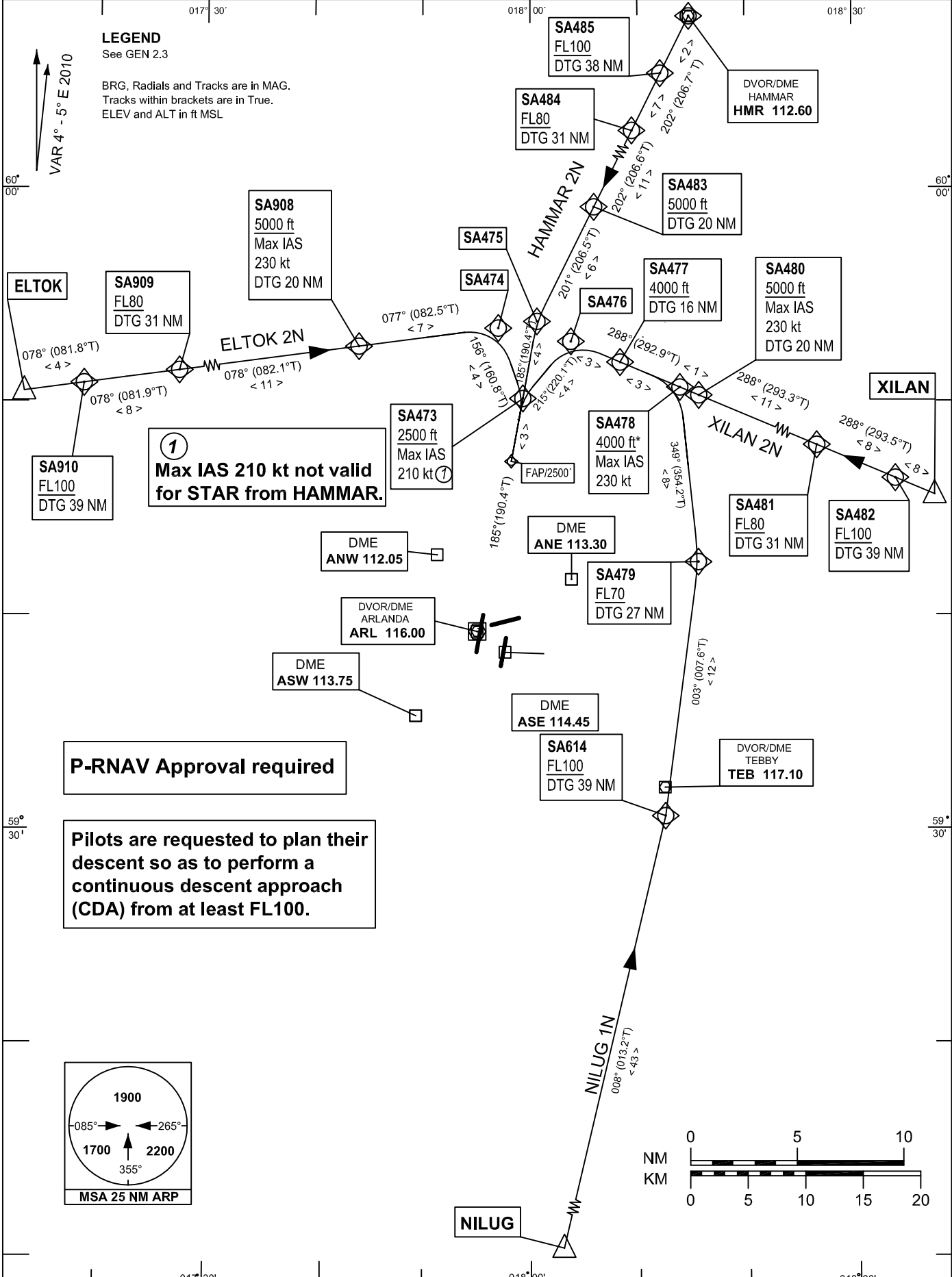


LEGEND

See GEN 2.3

BRG, Radials and Tracks are in MAG.
Tracks within brackets are in True.
ELEV and ALT in ft MSL

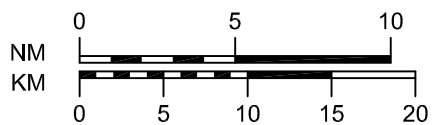
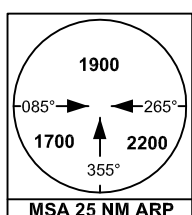
VAR 4° - 5° E 2010



1
Max IAS 210 kt not valid
for STAR from HAMMAR.

P-RNAV Approval required

Pilots are requested to plan their descent so as to perform a continuous descent approach (CDA) from at least FL100.



P-RNAV STAR**STOCKHOLM/Arlanda
RWY 19 R****REMARK**

Note 1: Aircraft to STOCKHOLM/Arlanda shall not be operated at an airspeed of more than 250 kt IAS below FL100 unless otherwise instructed.

Note 2: When established on ILS final approach track, maintain 160 kt IAS or more until passing OM, unless otherwise instructed. If unable, inform ATC immediately.

Note 3: In case of radio communication failure, see AD 2.22 para 3.

Note 4: Pilots are requested to plan their descent so as to perform a continuous descent approach (CDA) from at least FL100.

Prescribed Coding of P-RNAV STAR for RWY 19R at Stockholm/Arlanda (ESSA)

STAR	Path term	To fix	WPT desc	Hdg/ Course	Turn Dir	Rest Alts	Speed Limits
ELTOK2N (ELTO2N)	IF	ELTOK	E				
	TF	SA910	E			+FL100	
	TF	SA909	E			+FL80	
	TF	SA908	E			+5000	230
	TF	SA474	E				
	TF	SA473	E			+2500	210
	TF	FAP19R*)	EE			2500	

STAR instruction: ELTOK – SA910 (FL100 or above) – SA909 (FL80 or above) – SA908 (max IAS 230 kt, 5000 ft or above) – SA474 – SA473 (max IAS 210 kt, 2500 ft or above) – FAP19R*)

*) Unnamed WPT, due to different coding/naming conventions at navdatabase suppliers.

STAR	Path term	To fix	WPT desc	Hdg/ Course	Turn Dir	Rest Alts	Speed Limits
HAMMAR2N (HMR2N)	IF	HMR	V				
	TF	SA485	E			+FL100	
	TF	SA484	E			+FL80	
	TF	SA483	E			+5000	
	TF	SA475	E				
	TF	SA473	E			+2500	
	TF	FAP19R*)	EE			2500	

STAR instruction: HMR – SA485 (FL100 or above) - SA484 (FL80 or above) – SA483 (5000 ft or above) – SA475 – SA473 (2500 ft or above) – FAP19R*)

*) Unnamed WPT, due to different coding/naming conventions at navdatabase suppliers

Prescribed Coding of P-RNAV STAR for RWY 19R at Stockholm/Arlanda (ESSA)

STAR	Path term	To fix	WPT desc	Hdg/ Course	Turn Dir	Rest Alts	Speed Limits
NILUG1N (NILU1N)	IF	NILUG	E				
	TF	SA614	E			+FL100	
	TF	SA479	E			+FL70	
	TF	SA478	E			+4000	230
	TF	SA477	E			+4000	
	TF	SA476	E				
	TF	SA473	E			+2500	210
	TF	FAP19R*)	EE			2500	

STAR instruction: NILUG – SA614 (FL100 or above) – SA479 (FL70 or above) – SA478 (max IAS 230 kt, 4000 ft or above) – SA477 (4000 ft or above) – SA476 – SA473 (max IAS 210 kt, 2500 ft or above) – FAP19R*)

*) Unnamed WPT, due to different coding/naming conventions at navdatabase suppliers

STAR	Path term	To fix	WPT desc	Hdg/ Course	Turn Dir	Rest Alts	Speed Limits
XILAN2N (XILA2N)	IF	XILAN	E				
	TF	SA482	E			+FL100	
	TF	SA481	E			+FL80	
	TF	SA480	E			+5000	230
	TF	SA476	E				
	TF	SA473	E			+2500	210
	TF	FAP19R*)	EE			2500	

STAR instruction: XILAN – SA482 (FL100 or above) – SA481 (FL80 or above) – SA480 (max IAS 230 kt, 5000 ft or above) – SA476 – SA473 (max IAS 210 kt, 2500 ft or above) – FAP19R*)

*) Unnamed WPT, due to different coding/naming conventions at navdatabase suppliers