

FMS/RNAV SID**STOCKHOLM/Arlanda
RWY 08 RIGHT TURN****INITIAL CLIMB CLEARANCE Common to all SIDs: Unless otherwise specified, climb to 5000 ft.**

- Note 1. Aircraft proceeding on SID shall use 400 ft/NM as a minimum gradient of climb up to 5000 ft MSL. Aircraft unable to conform with this procedure shall inform ATC accordingly.
- Note 2. Aircraft from STOCKHOLM/Arlanda shall not be operated at an airspeed of more than 250 kt IAS below FL 100 unless otherwise instructed.
- Note 3. Contact Frequency: Contact STOCKHOLM CONTROL, when so instructed by TWR, on frequency adjacent to WPT sequence below.
- Note 4. All FMS/RNAV SIDs are based on DME/DME for position update.

Prescribed Coding of FMS/RNAV SIDs for RWY 08 (RIGHT TURN) at Stockholm/Arlanda (ESSA)

SID	Path Term	To fix	WPT Desc	Hdg/ Course	Turn Dir	Rest Alts	Speed Limit	Rec Nav
ABENI 2 R (ABEN2R)	CF	SA418	EY	072.0	R	+ 600	205	ARL
	DF	SA557	E			+1500	205	
	TF	ABENI	E					
	TF	DKR	VE					

SID instruction: Climb on 072° to SA418 - SA557 (max 205 kt IAS until SA557) - ABENI - DKR **124.100 MHz**

Special instruction for B757, B767, MD-11: Climb on 072° to ARL DME 3.2. Turn right to track 228°. When established on track 228°, fly direct to SA557 (max 205 kt IAS until SA557), then follow WPT sequence.

ACFT unable to follow FMS/RNAV SID: Report "unable RNAV SID due RNAV type" to Clearance Delivery and "unable RNAV SID" to Stockholm Control at first contact. Climb on track 072° to ARL DME 3.2. Turn right to track 228° (max 205 kt IAS until established on track 228°). Expect radar vectors to DUNKER.

BABAP 2 R (BABA2R)	CF	SA418	EY	072.0		+ 600	205	ARL
	TF	SA416	E					
	TF	BABAP	EE					
	IF	BABAP	E					
	TF	NEKLA	EE					

SID instruction: Climb on 072° to SA418 (max 205 kt IAS until SA418) - SA416 - BABAP **126.650 MHz**
(For traffic via UN623: After BABAP proceed to NEKLA.)

ACFT unable to follow FMS/RNAV SID: Report "unable RNAV SID due RNAV type" to Clearance Delivery and "unable RNAV SID" to Stockholm Control at first contact. Climb on track 072° (max 205 kt IAS until ARL DME 3.7). Expect radar vectors to BABAP.

Prescribed Coding of FMS/RNAV SIDs for RWY 08 (RIGHT TURN) Stockholm/Arlanda (ESSA)

SID	Path Term	To fix Desc	WPT Course	Hdg/ Dir	Turn Alts	Rest Limit	Speed Nav	Rec
DIGLI 2 R (DIGL2R)	CF	SA418	EY	072.0	R	+ 600	205	ARL
	DF	SA557	E			+1500	205	
	TF	SA717	E					
	TF	DIGLI	E					
	TF	NOSLI	EE					

SID instruction: Climb on 072° to SA418 - SA557 (max 205 kt IAS until SA557) - SA717 - DIGLI - **124.100 MHz** NOSLI

Special instruction for B757, B767, MD-11: Climb on 072° to ARL DME 3.2. Turn right to track 228°. When established on track 228°, fly direct to SA557 (max 205 kt IAS until SA557), then follow WPT sequence.

ACFT unable to follow FMS/RNAV SID: Report "unable RNAV SID due RNAV type" to Clearance Delivery and "unable RNAV SID" to Stockholm Control at first contact.
Climb on track 072° to ARL DME 3.2. Turn right to track 228° (max 205 kt IAS until established on track 228°). Expect radar vectors to NOSLI.

GALNU 2 R (GALN2R)	CF	SA418	EY	072.0	R	+ 600	205	ARL
	DF	SA557	E			+1500	205	
	TF	SA717	E					
	TF	SA718	E					
	TF	GALNU	E					
	TF	TRS	VE					

SID instruction: Climb on 072° to SA418 - SA557 (max 205 kt IAS until SA557) - SA717 - SA718 - GALNU - TRS **124.100 MHz**

Special instruction for B757, B767, MD-11: Climb on 072° to ARL DME 3.2. Turn right to track 228°. When established on track 228°, fly direct to SA557 (max 205 kt IAS until SA557), then follow WPT sequence.

ACFT unable to follow FMS/RNAV SID: Report "unable RNAV SID due RNAV type" to Clearance Delivery and "unable RNAV SID" to Stockholm Control at first contact.
Climb on track 072° to ARL DME 3.2. Turn right to track 228° (max 205 kt IAS until established on track 228°). Expect radar vectors to TROSA.

FMS/RNAV SID

STOCKHOLM/Arlanda
RWY 08 RIGHT TURN

Prescribed Coding of FMS/RNAV SIDs for RWY 08 (RIGHT TURN) at Stockholm/Arlanda (ESSA)

SID	Path Term	To fix	WPT Desc	Hdg/ Course	Turn Dir	Rest Alts	Speed Limit	Rec Nav
LUMAX 3 R (LUMA3R)	CF	SA418	EY	072.0	R	+ 600	205	ARL
	DF	SA558	E			+2500	205	
	TF	ARL	V			+2500	205	
	TF	SA860	E					
	TF	LUMAX	E					
	TF	RESNA	EE					

SID instruction: Climb on 072° to SA418 - SA558 (MNM 2500 ft) - ARL (max 205 kt IAS until ARL) - SA860 - LUMAX - RESNA **124.100 MHz**

Special instruction for B757, B767, MD-11: Climb on 072° to ARL DME 3.2. Turn right to track 260°. Intercept ARL R-129 and proceed to ARL (MNM 2500 ft and max 205 kt IAS until ARL). Fly direct to SA860, then follow WPT sequence.

ACFT unable to follow FMS/RNAV SID: Report "unable RNAV SID due RNAV type" to Clearance Delivery and "unable RNAV SID" to Stockholm Control at first contact.
Climb on track 072° to ARL DME 3.2. Turn right to track 260°. Intercept ARL R-129 and proceed to ARL (MNM 2500 ft and max 205 kt IAS until ARL). Turn right to track 340°. Expect radar vectors to RESNA.

NORTEL 2 R (NTL2R)	CF	SA418	EY	072.0		+ 600	205	ARL
	TF	NTL	VE					

SID instruction: Climb on 072° to SA418 (max 205 kt IAS until SA418) - NTL **126.650 MHz**

ACFT unable to follow FMS/RNAV SID: Report "unable RNAV SID due RNAV type" to Clearance Delivery and "unable RNAV SID" to Stockholm Control at first contact.
Climb on track 072° to ARL DME 3.7 (max 205 kt IAS until ARL DME 3.7). Fly direct to NORTEL.

ROKNI 2 R (ROKN2R)	CF	SA418	EY	072.0	R	+ 600	205	ARL
	DF	SA557	E			+1500	205	
	TF	SA716	E					
	TF	ROKNI	E					
	TF	ARS	VE					

SID instruction: Climb on 072° to SA418 - SA557 (max 205 kt IAS until SA557) - SA716 - ROKNI - ARS **124.100 MHz**

Special instruction for B757, B767, MD-11: Climb on 072° to ARL DME 3.2. Turn right to track 228°. When established on track 228°, fly direct to SA557 (max 205 kt IAS until SA557), then follow WPT sequence.

ACFT unable to follow FMS/RNAV SID: Report "unable RNAV SID due RNAV type" to Clearance Delivery and "unable RNAV SID" to Stockholm Control at first contact.
Climb on track 072° to ARL DME 3.2. Turn right to track 228° (max 205 kt IAS until established on track 228°). Expect radar vectors to AROS.

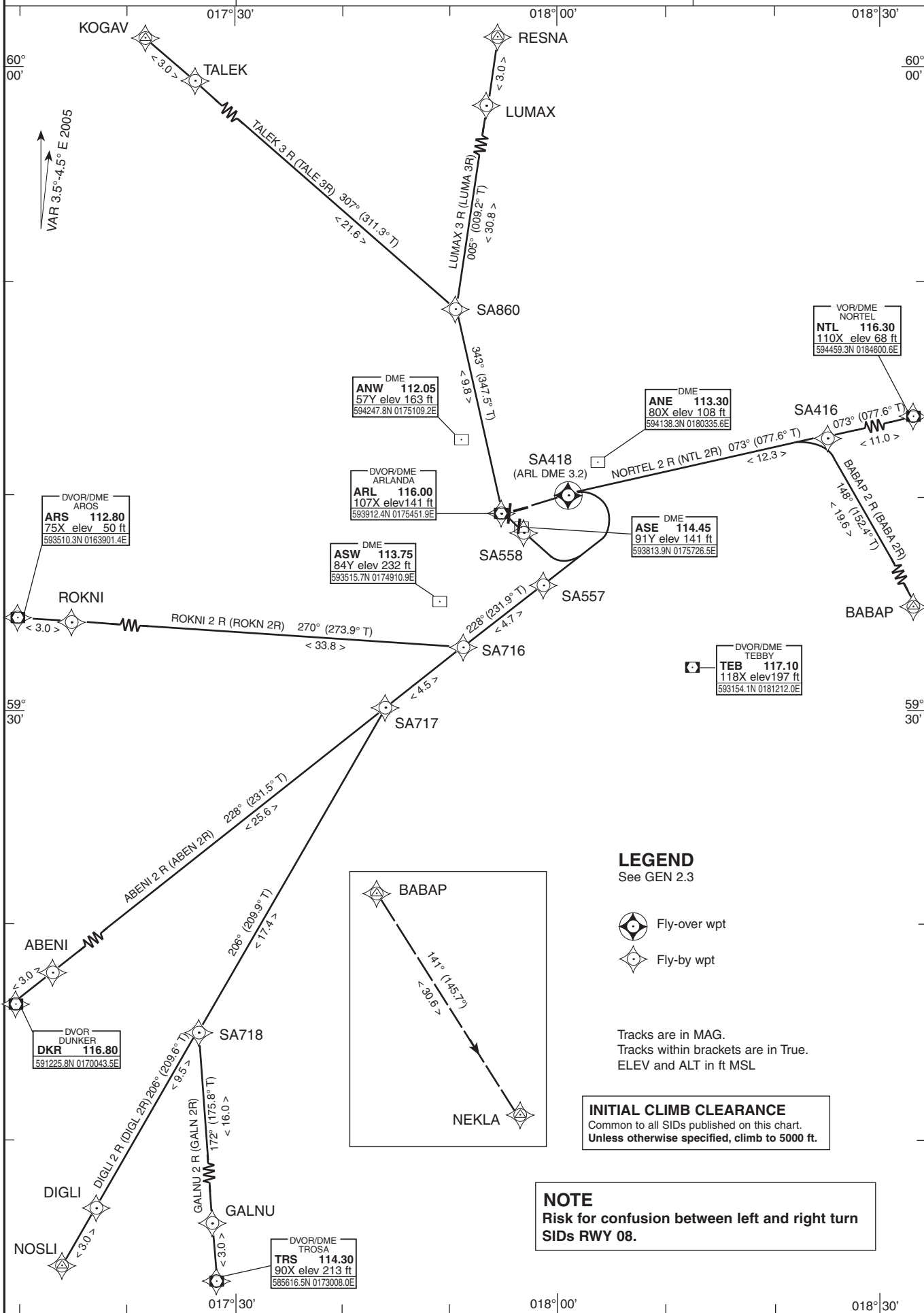
Prescribed Coding of FMS/RNAV SIDs for RWY 08 (RIGHT TURN) Stockholm/Arlanda (ESSA)

SID	Path Term	To fix Desc	WPT Course	Hdg/ Dir	Turn Alts	Rest Limit	Speed Nav	Rec
TALEK 3 R (TALE3R)	CF	SA418	EY	072.0	R	+ 600	205	ARL
	DF	SA558	E			+2500	205	
	TF	ARL	V			+2500	205	
	TF	SA860	E					
	TF	TALEK	E					
	TF	KOGAV	EE					

SID instruction: Climb on 072° to SA418 - SA558 (MNM 2500 ft) - **124.100 MHz**
ARL (max 205 kt IAS until ARL) - SA860 -TALEK - KOGAV

Special instruction for B757, B767, MD-11: Climb on 072° to ARL DME 3.2. Turn right to track 260°. Intercept ARL R-129 and proceed to ARL (MNM 2500 ft and max 205 kt IAS until ARL). Fly direct to SA860, then follow WPT sequence.

ACFT unable to follow FMS/RNAV SID: Report "unable RNAV SID due RNAV type" to Clearance Delivery and "unable RNAV SID" to Stockholm Control at first contact.
Climb on track 072° to ARL DME 3.2. Turn right to track 260°. Intercept ARL R-129 and proceed to ARL (MNM 2500 ft and max 205 kt IAS until ARL). Turn right to track 340°. Expect radar vectors to KOGAV.



INTENTIONALLY BLANK