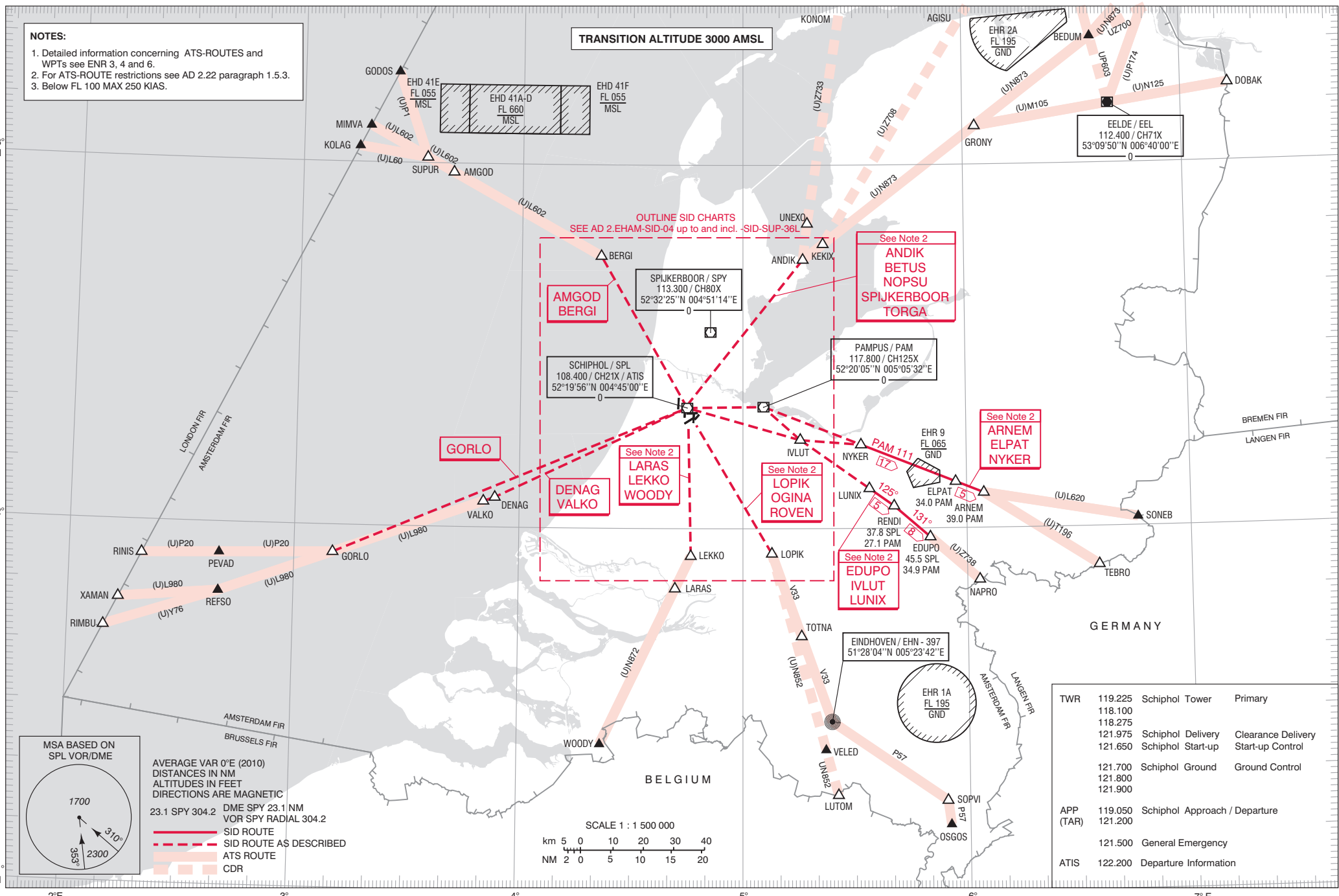


NOTES:
 1. Detailed information concerning ATS-ROUTES and WPTs see ENR 3, 4 and 6.
 2. For ATS-ROUTE restrictions see AD 2.22 paragraph 1.5.3.
 3. Below FL 100 MAX 250 KIAS.

TRANSITION ALTITUDE 3000 AMSL



MSA BASED ON SPL VOR/DME

AVERAGE VAR 0°E (2010)
 DISTANCES IN NM
 ALTITUDES IN FEET
 DIRECTIONS ARE MAGNETIC

23.1 SPY 304.2 DME SPY 23.1 NM
 VOR SPY RADIAL 304.2

— SID ROUTE
 - - - SID ROUTE AS DESCRIBED
 - - - ATS ROUTE
 - - - CDR

SCALE 1 : 1 500 000

km 5 0 10 20 30 40
 NM 2 0 5 10 15 20

TWR	119.225	Schiphol Tower	Primary
	118.100		
	118.275		
	121.975	Schiphol Delivery	Clearance Delivery
	121.650	Schiphol Start-up	Start-up Control
	121.700	Schiphol Ground	Ground Control
	121.800		
	121.900		
APP (TAR)	119.050	Schiphol Approach / Departure	
	121.200		
	121.500	General Emergency	
ATIS	122.200	Departure Information	

CHANGE: REP VELED and notes added, editorial.