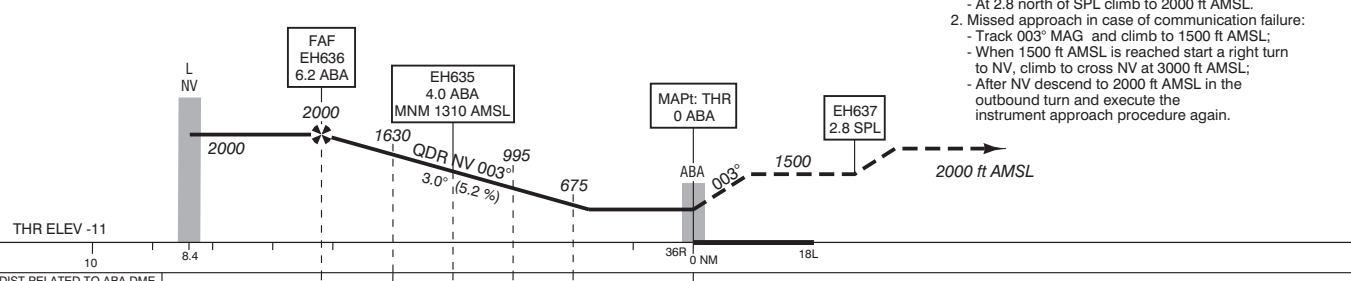


APP (TAR)	119.050	Schiphol Approach / Departure
	121.200	
	118.400	Schiphol Arrival
	131.150	
TWR	119.225	Schiphol Tower Primary
	118.100	
	121.800	Schiphol Ground Ground Control
	121.500	General Emergency
	243.000	
ATIS	132.975	Arrival Information
	108.400	SPL VOR

DO NOT DESCEND BELOW THE DESCENT PROFILE

TRANSITION LEVEL BY ATC
TRANSITION ALTITUDE 3000 ft AMSL

- Missed approach:
 - Inform ATC immediately.
 - Track 003° MAG and climb to 1500 ft AMSL.
 - At 2.8 north of SPL climb to 2000 ft AMSL.
- Missed approach in case of communication failure:
 - Track 003° MAG and climb to 1500 ft AMSL;
 - When 1500 ft AMSL is reached start a right turn to NV, climb to cross NV at 3000 ft AMSL;
 - After NV descend to 2000 ft AMSL in the outbound turn and execute the instrument approach procedure again.



GS IN KT	100	120	140	160	180	200	220
TIME AND VERTICAL SPEED	530 ft/min	635 ft/min	745 ft/min	850 ft/min	955 ft/min	1060 ft/min	1165 ft/min

OCA (OCH) ELEV THR 36R: -11.1 ft				MSA BASED ON SPL VOR / DME	
ACFT CAT	NDB / DME MAPt: THR	CIRCLING *	* Circling procedures to and landing on RWY 18L and 36L is not permitted, except in case of an emergency.	THR 36R	52°17'27"N 004°46'38"E
A	570 (580)	620 (630)		EH635	52°13'28"N 004°46'16"E
B		780 (790)		EH636	52°11'18"N 004°46'04"E
C		880 (890)		EH637	52°22'24"N 004°47'06"E
D		890 (900)			
CEILING AND VISIBILITY MINIMA			BEARINGS ARE MAGNETIC DISTANCES IN NM ALTITUDES AND ELEVATIONS IN FEET		
TAKE-OFF	DAY: NA	NIGHT: NA			
LANDING	DAY: NA	NIGHT: NA			