

NOTES:

- Navigation in the initial and intermediate approach segment is primarily based on radar vectors provided by ATC.
- Execution of the complete procedure overhead depicted by _____ at ATC discretion or in case of COM-failure.
- Given EH waypoints beyond the FAF must be considered to be supplementary information.

WARNING!
After passing 8.0 PAM expect moderate turbulence on final approach when average wind velocity exceeds 30 KT.

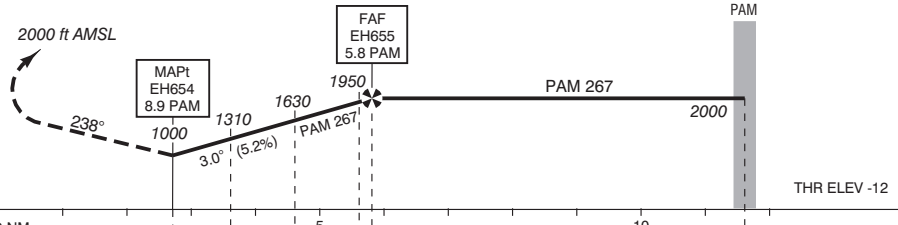
IN CASE OF MISSED APPROACH INFORM ATC IMMEDIATELY

APP (TAR)	119.050	Schiphol Approach / Departure
	121.200	
	118.400	Schiphol Arrival
	131.150	
TWR	119.225	Schiphol Tower Primary
	118.100	
	121.700	Schiphol Ground Ground Control
	121.500	General Emergency
	243.000	
ATIS	132.975	Arrival Information
	108.400	SPL VOR

- Missed approach
 - Inform ATC immediately
 - At MAPt turn left to track 238° MAG and climb to 2000 ft AMSL.
- Missed approach in case of communication failure:
 - At MAPt turn left to track 238° MAG and climb to 3000 ft AMSL;
 - After passing 2000 ft AMSL start a right turn to SPL so as to cross SPL at 3000 ft AMSL and execute the instrument approach procedure again.

**TRANSITION LEVEL BY ATC
TRANSITION ALTITUDE 3000 ft AMSL**

DO NOT DESCEND BELOW THE DESCENT PROFILE



DIST RELATED TO PAM DME	06	24	0	NM	8.9	8	7	6	5.8	5	10	0	NM
GS IN KT	100	120	140	160	180	200	220						
VERTICAL SPEED	530 ft/min	635 ft/min	745 ft/min	850 ft/min	955 ft/min	1060 ft/min	1165 ft/min						

OCA (OCH) ELEV THR 24: -11.6 ft			THR 24 52°18'16"N 004°46'39"E		MSA BASED ON SPL VOR / DME
ACFT CAT	VOR / DME - CIRCLING 24* MAPt: 8.9 PAM	* For circling to other RWYs mentioned OCA/H must be respected. * Circling procedures to and landing on RWY 18L and 36L is not permitted, except in case of an emergency.	EH654 52°19'42"N 004°51'02"E		
A	1000 (1010)		EH655 52°19'50"N 004°56'01"E		
B					
C					
CEILING AND VISIBILITY MINIMA			BEARINGS ARE MAGNETIC DISTANCES IN NM ALTITUDES AND ELEVATIONS IN FEET		
TAKE-OFF	DAY: NA	NIGHT: NA			
LANDING	DAY: 1100 ft / 6000 m	NIGHT: 1100 ft / 6000 m			