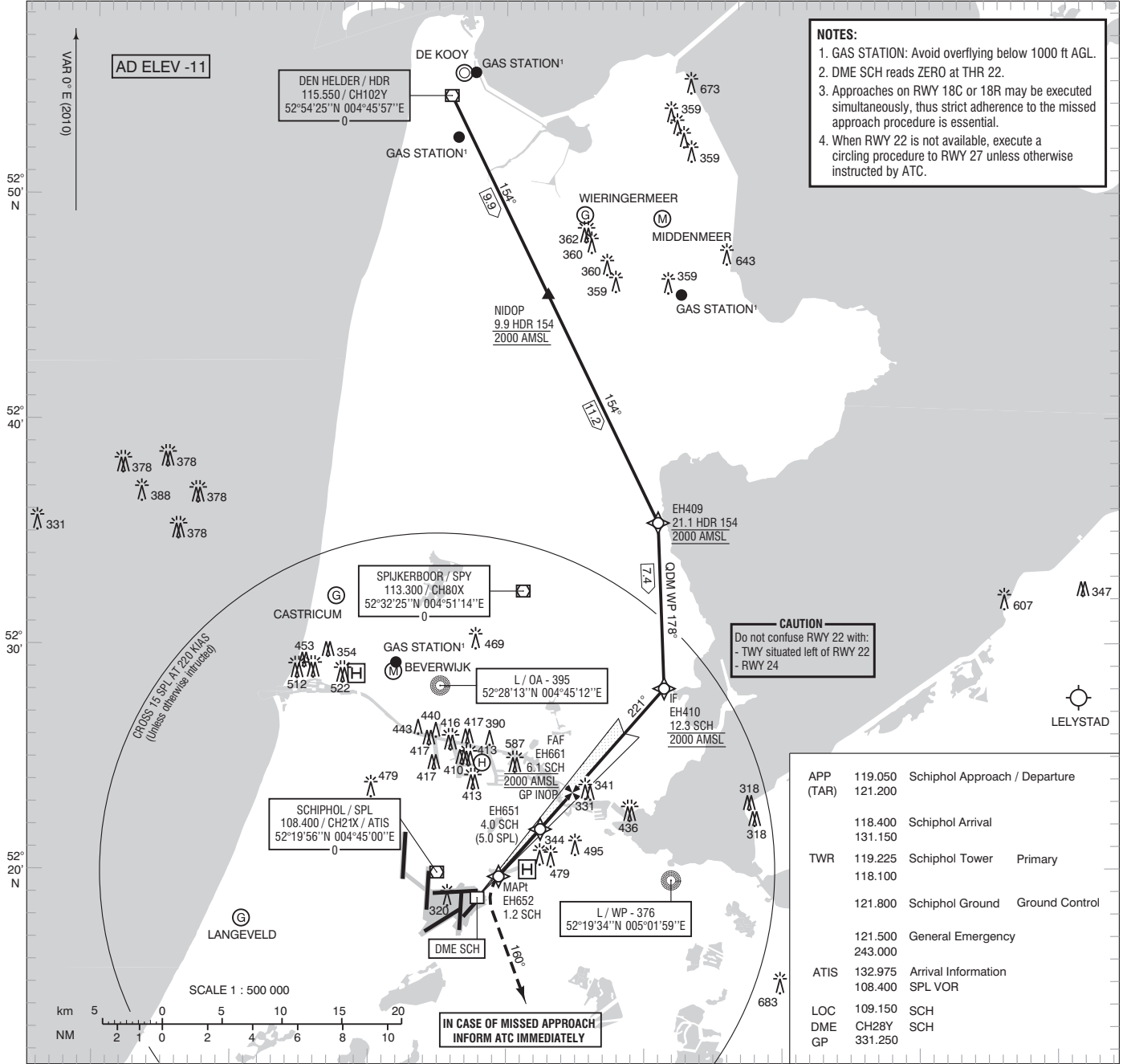


NOTES:

1. GAS STATION: Avoid overflying below 1000 ft AGL.
2. DME SCH reads ZERO at THR 22.
3. Approaches on RWY 18C or 18R may be executed simultaneously, thus strict adherence to the missed approach procedure is essential.
4. When RWY 22 is not available, execute a circling procedure to RWY 27 unless otherwise instructed by ATC.



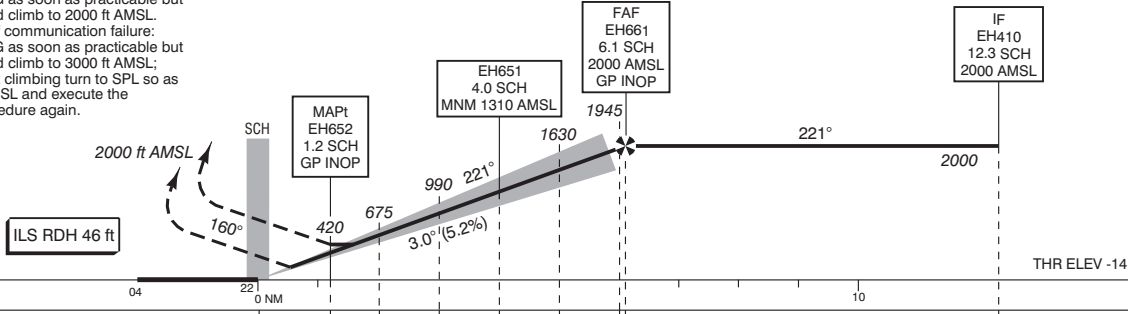
CAUTION
Do not confuse RWY 22 with:
- TWY situated left of RWY 22
- RWY 24

APP (TAR)	119.050	Schiphol Approach / Departure
	121.200	
	118.400	Schiphol Arrival
	131.150	
TWR	119.225	Schiphol Tower Primary
	118.100	
	121.800	Schiphol Ground Ground Control
	121.500	General Emergency
	243.000	
ATIS	132.975	Arrival Information
	108.400	SPL VOR
LOC	109.150	SCH
DME	CH28Y	SCH
GP	331.250	

1. Missed approach:
 - Inform ATC immediately.
 - Turn left to track 160° MAG as soon as practicable but not below 400 ft AMSL and climb to 2000 ft AMSL.
2. Missed approach in case of communication failure:
 - Turn left to track 160° MAG as soon as practicable but not below 400 ft AMSL and climb to 3000 ft AMSL;
 - At 2000 ft AMSL start a left climbing turn to SPL so as to cross SPL at 3000 ft AMSL and execute the instrument approach procedure again.

DO NOT DESCEND BELOW THE DESCENT PROFILE

TRANSITION LEVEL BY ATC
TRANSITION ALTITUDE 3000 ft AMSL



DIST RELATED TO SCH DME	04	221	0	1.2	2	3	4.0	5	6.1	10	12.3
GS IN KT	60	80	100	120	140	160	180				
VERTICAL SPEED	320 ft/min	425 ft/min	530 ft/min	635 ft/min	745 ft/min	850 ft/min	955 ft/min				

OCA (OCH) ELEV THR 22: -13.8 ft

ACFT CAT	CAT I	GP INOP MAPt: 1.2 SCH	CIRCLING *
H	129 (142)	540 (550)	620 (630)
CEILING AND VISIBILITY MINIMA			
TAKE-OFF	DAY:	NA	NIGHT:
LANDING	DAY:	NA	NIGHT:

* Circling procedures to and landing on RWY 18L and 36L is not permitted, except in case of an emergency.

BEARINGS ARE MAGNETIC
DISTANCES IN NM
ALTITUDES AND ELEVATIONS IN FEET

THR 22	52°18'50"N	004°48'11"E
EH409	52°35'27"N	005°01'03"E
EH410	52°28'05"N	005°01'29"E
EH661	52°23'28"N	004°54'49"E
EH651	52°21'51"N	004°52'29"E
EH652	52°19'45"N	004°49'28"E

