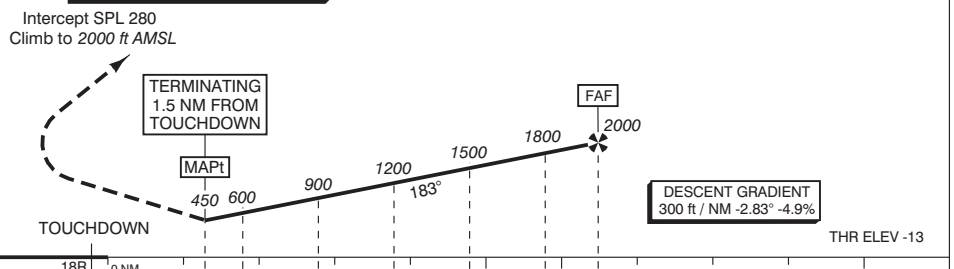


APP (TAR)	119.050	Schiphol Approach / Departure
	121.200	
	118.400	Schiphol Arrival
	131.150	
TWR	119.225	Schiphol Tower Primary
	118.100	
	118.275	
	121.900	Schiphol Ground Ground Control
	121.500	General Emergency
	243.000	
ATIS	132.975	Arrival Information
	108.400	SPL VOR

1. Missed approach:  
 - Inform ATC immediately.  
 - At MAPt turn right to intercept SPL 280 and do not overshoot SPL 240.  
 - Climb to 2000 ft AMSL.  
 2. Missed approach in case of communication failure:  
 - At MAPt turn right to intercept SPL 280 and do not overshoot SPL 240.  
 - Climb to 3000 ft AMSL.  
 - At 2000 ft AMSL start a right climbing turn to SPL so as to cross SPL at 3000 ft AMSL and hold or execute the most suitable instrument approach procedure.

TRANSITION LEVEL BY ATC  
 TRANSITION ALTITUDE 3000 ft AMSL

DO NOT DESCEND BELOW THE DESCENT PROFILE



DIST RELATED TO TOUCHDOWN	2	1	0	1.5	2	3	4	5	6	6.7	10
GS IN KT	100	120	140	160	180	200	220				
VERTICAL SPEED	500 ft/min	600 ft/min	700 ft/min	800 ft/min	900 ft/min	1000 ft/min	1100 ft/min				

OCA (OCH) ELEV THR 18R: -13.0 ft		MSA BASED ON SPL VOR / DME		
RWY	18R			
ELEV	-13			
OCA	440			
OCH	450			
MAPt	1.5 NM FROM TOUCHDOWN			
CIRCLING *	A: 620 (630)	B: 780 (790)	C: 880 (890)	D: 890 (900)
CEILING AND VISIBILITY MINIMA		* Circling procedures to and landing on RWY 18L and 36L is not permitted, except in case of an emergency.		
TAKE-OFF	DAY: NA	NIGHT: NA	BEARINGS ARE MAGNETIC DISTANCES IN NM ALTITUDES AND ELEVATIONS IN FEET	
LANDING	DAY: NA	NIGHT: NA		