

**NOTES:**

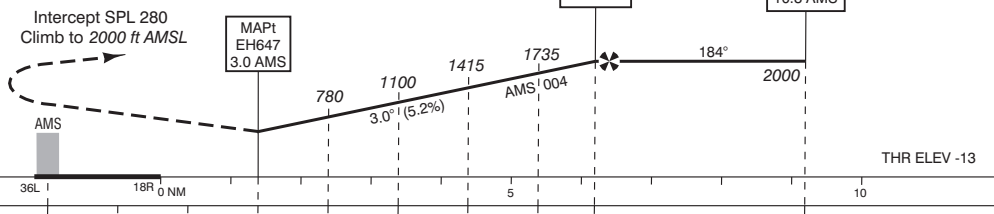
- Final approach diverges slightly from extended RWY centreline.
- Navigation in the initial and intermediate approach segment is primarily based on radar vectors provided by ATC.
- Execution of the complete procedure overhead depicted by \_\_\_\_\_ at ATC discretion or in case of COM-failure.
- Given EH waypoints beyond the FAF must be considered to be supplementary information.

APP (TAR)	119.050	Schiphol Approach / Departure
	121.200	
	118.400	Schiphol Arrival
	131.150	
TWR	119.225	Schiphol Tower Primary
	118.100	
	118.275	
	121.900	Schiphol Ground Ground Control
	121.500	General Emergency
	243.000	
ATIS	132.975	Arrival Information
	108.400	SPL VOR

- Missed approach
  - Inform ATC immediately.
  - At MAPt turn right to intercept SPL 280 and do not overshoot SPL 240.
  - Climb to 2000 ft AMSL. Cross 7.5 SPL at 2000 ft AMSL.
- Missed approach in case of communication failure
  - Turn right as soon as practicable to intercept SPL 280 and do not overshoot SPL 240.
  - Climb to 3000 ft AMSL.
  - At 7.5 SPL 280/EH624 turn right to SPL.
  - Cross SPL at 3000 ft and execute the instrument approach procedure again.

TRANSITION LEVEL BY ATC  
TRANSITION ALTITUDE 3000 ft AMSL

DO NOT DESCEND BELOW THE DESCENT PROFILE



DIST RELATED TO AMS DME	0 NM	3.0	4	5	6	7	7.8	10.8
GS IN KT	100	120	140	160	180	200	220	
VERTICAL SPEED	530 ft/min	635 ft/min	745 ft/min	850 ft/min	955 ft/min	1060 ft/min	1165 ft/min	

OCA (OCH) ELEV THR 18R: -13.0 ft				MSA BASED ON SPL VOR / DME	
ACFT CAT	VOR / DME MAPt: 3.0 AMS	CIRCLING*	* Circling procedures to and landing on RWY 18L and 36L is not permitted, except in case of an emergency.	THR 18R	52°21'37"N 004°42'42"E
A	690 (710)	690 (710)		EH624	52°21'10"N 004°32'55"E
B		780 (790)		EH644	52°31'11"N 004°37'41"E
C		880 (890)		EH645	52°30'45"N 004°43'41"E
D		890 (900)	EH646	52°27'46"N 004°43'19"E	
				EH647	52°22'57"N 004°42'43"E
CEILING AND VISIBILITY MINIMA			BEARINGS ARE MAGNETIC DISTANCES IN NM ALTITUDES AND ELEVATIONS IN FEET		
TAKE-OFF	DAY:	NA	NIGHT:	NA	
LANDING	DAY:	NA	NIGHT:	NA	

