

NOTES:

1. ATC may deviate from the transitions by radar vectors.
2. Rejoining the transition may take place at NIRS.
3. ILS must be available.
4. DME VPB reads ZERO at THR 18R.
5. Given EH waypoints beyond the FAP must be considered to be supplementary information.

Altitudes / Speeds:
ENTRY LEVELS SCHIPHOL TMA: Cross IAF at FL 100. During the transition, descend to or maintain a level as instructed by ATC.

When cleared for NIRS / NARIX approach RWY 18R:

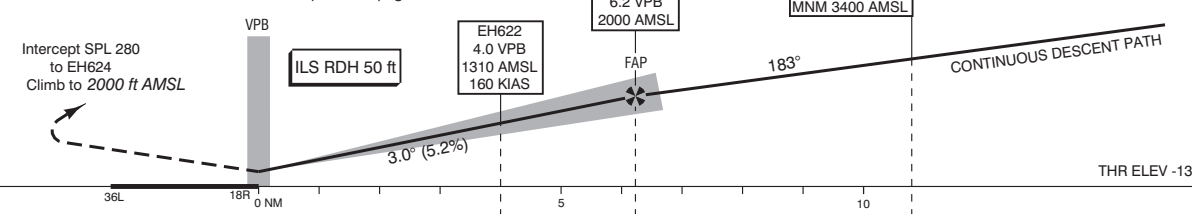
- Continue via the transition.
- Switch to QNH at NIRS/NARIX.
- Establish a continuous descent path.
- The minimum altitudes shall be respected.
- The published speeds are mandatory.
- Execute the ILS approach RWY 18R.

APP (TAR)	119.050	Schiphol Approach / Departure
	121.200	
	118.400	Schiphol Arrival
	131.150	
TWR	119.225	Schiphol Tower Primary
	118.100	
	118.275	
	121.900	Schiphol Ground Ground Control
	121.500	General Emergency
	243.000	
ATIS	132.975	Arrival Information
	108.400	SPL VOR
LOC	110.100	VPB
DME	CH38X	VPB
GP	334.400	

1. Missed approach:
- Inform ATC immediately.
- Turn right as soon as practicable to intercept SPL 280 and do not overshoot SPL 240;
- Climb to 2000 ft AMSL. Cross EH624 at 2000 ft AMSL.

2. Missed approach in case of communication failure:
- Turn right as soon as practicable to intercept SPL 280 and do not overshoot SPL 240;
- Climb to 3000 ft AMSL;
- At 7.5 SPL 280/EH624 turn right to SPL;
- Cross SPL at 3000 ft AMSL and execute the non com instrument approach procedure as depicted on page AD 2.EHAM-IAC-18R.1.

**TRANSITION LEVEL BY ATC
TRANSITION ALTITUDE 3000 ft AMSL**



DIST RELATED TO VPB DME	0 NM	4.0	6.2	10.8			
GS IN KT	100	120	140	160	180	200	220
VERTICAL SPEED	530 ft/min	635 ft/min	745 ft/min	850 ft/min	955 ft/min	1060 ft/min	1165 ft/min

OCA (OCH) ELEV THR 18R: -13.0 ft			
ACFT CAT	CAT I	CAT II	CIRCLING*
A	128 (141)	(50)	620 (630)
B	138 (151)	(59)	780 (790)
C	151 (164)	(73)	880 (890)
D	165 (178)	(89)	890 (900)
DL	168 (181)	(96)	
CEILING AND VISIBILITY MINIMA			
TAKE-OFF	DAY:	NA	NIGHT: NA
LANDING	DAY:	NA	NIGHT: NA
* Circling procedures to and landing on RWY 18L and 36L is not permitted, except in case of an emergency.			
BEARINGS ARE MAGNETIC DISTANCES IN NM ALTITUDES AND ELEVATIONS IN FEET			
THR 18R 52°21'37"N 004°42'42"E		MSA BASED ON SPL VOR/DME	
EH600 52°35'44"N 005°10'49"E			
EH601 52°41'17"N 004°50'57"E			
EH602 52°41'18"N 004°40'48"E			
EH603 52°41'17"N 004°30'48"E			
EH604 52°35'22"N 004°50'14"E			
EH605 52°03'59"N 004°06'58"E			
EH606 52°25'21"N 004°23'16"E			
EH607 52°35'02"N 004°38'49"E			
EH608 52°32'22"N 004°43'41"E			
EH621 52°27'46"N 004°43'16"E			
EH622 52°25'36"N 004°43'04"E			
EH624 52°21'10"N 004°32'55"E			