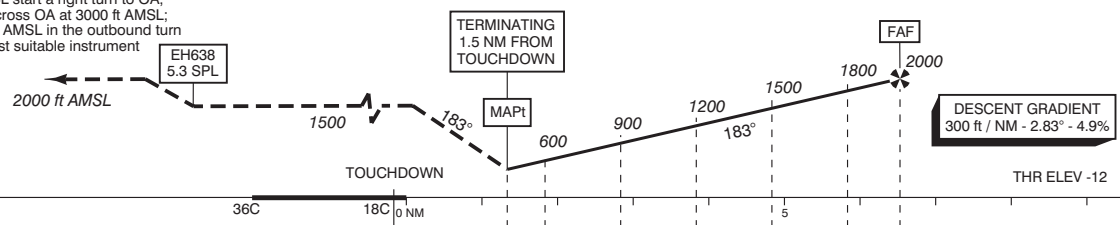


APP (TAR)	119.050	Schiphol Approach / Departure
	121.200	
	118.400	Schiphol Arrival
	131.150	
TWR	119.225	Schiphol Tower Primary
	118.100	
	121.800	Schiphol Ground Ground Control
	121.500	General Emergency
	243.000	
ATIS	132.975	Arrival Information
	108.400	SPL VOR

1. Missed approach - Inform ATC immediately.
 - Track 183° MAG and climb to 1500 ft AMSL.
 - At 5.3 south of SPL, climb to 2000 ft AMSL.
 2. Missed approach in case of communication failure
 - Track 183° MAG and climb to 1500 ft AMSL;
 - When reaching 1500 ft AMSL start a right turn to OA, climb to 3000 ft AMSL and cross OA at 3000 ft AMSL;
 - After OA descend to 2000 ft AMSL in the outbound turn and hold or execute the most suitable instrument approach procedure.

**TRANSITION LEVEL BY ATC
TRANSITION ALTITUDE 3000 ft AMSL**

DO NOT DESCEND BELOW THE DESCENT PROFILE



DIST RELATED TO TOUCHDOWN	0 NM	1.5	2	3	4	5	6	6.7
GS IN KT	100	120	140	160	180	200	220	
VERTICAL SPEED	500 ft/min	600 ft/min	700 ft/min	800 ft/min	900 ft/min	1000 ft/min	1100 ft/min	

OCA (OCH) ELEV THR 18C: -12.0 ft			
RWY	18C	* Circling procedures to and landing on RWY 18L and 36L is not permitted, except in case of an emergency.	EH638 52°14'40"N 004°43'55"E
ELEV	-12		
OCA	380		
OCH	390		
MAPt	1.5 NM FROM TOUCHDOWN		
CIRCLING *	A: 620 (630)	B: 780 (790)	C: 880 (890) D: 890 (900)
CEILING AND VISIBILITY MINIMA			
TAKE-OFF	DAY:	NA	NIGHT: NA
LANDING	DAY:	NA	NIGHT: NA
		BEARINGS ARE MAGNETIC DISTANCES IN NM ALTITUDES AND ELEVATIONS IN FEET	

