

- NOTES:**
1. Navigation in the initial and intermediate approach segment is primarily based on radar vectors provided by ATC.
 2. Execution of the complete procedure overhead depicted by _____ at ATC discretion or in case of COM-failure.
 3. DME ZWA reads ZERO at THR 18C.
 4. Approaches on RWY 06, 18R, 22, 27 or 36R may be executed simultaneously.
 5. In case of missed approach: Do not overshoot the initial missed approach altitude of 1500 ft AMSL.
 6. Given EH waypoints beyond the FAF must be considered to be supplementary information.

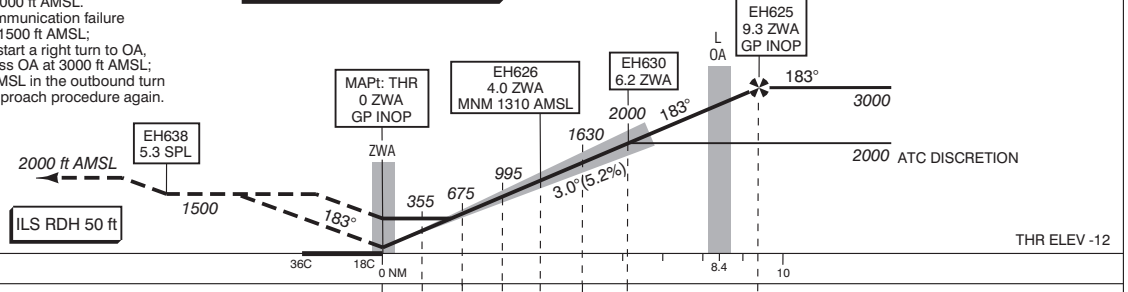
APP (TAR)	119.050	Schiphol Approach / Departure
	121.200	
	118.400	Schiphol Arrival
	131.150	
TWR	119.225	Schiphol Tower Primary
	118.100	
	121.800	Schiphol Ground Ground Control
	121.500	General Emergency
	243.000	
ATIS	132.975	Arrival Information
	108.400	SPL VOR
LOC	109.500	ZWA
DME	CH32X	ZWA
GP	332.600	

4°20' E 4°30' 4°40' 4°50' 5°00' 5°10' E

1. Missed approach
 - Inform ATC immediately.
 - Track 183° MAG and climb to 1500 ft AMSL.
 - At 5.3 south of SPL, climb to 2000 ft AMSL.
2. Missed approach in case of communication failure
 - Track 183° MAG and climb to 1500 ft AMSL;
 - When reaching 1500 ft AMSL start a right turn to OA, climb to 3000 ft AMSL and cross OA at 3000 ft AMSL;
 - After OA descend to 2000 ft AMSL in the outbound turn and execute the instrument approach procedure again.

TRANSITION LEVEL BY ATC
TRANSITION ALTITUDE 3000 ft AMSL

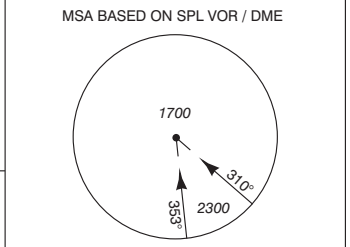
DO NOT DESCEND BELOW THE DESCENT PROFILE



DIST RELATED TO ZWA DME	0 NM	1	2	3	4.0	5	6.2	8.4	9.3
GS IN KT	100	120	140	160	180	200	220		
VERTICAL SPEED	530 ft/min	635 ft/min	745 ft/min	850 ft/min	955 ft/min	1060 ft/min	1165 ft/min		

OCA(OCH)/ELEV THR 18C: -12.0 ft

ACFT CAT	CAT I	CAT II	GP INOP MAPt: THR	CIRCLING*	THR 18C 52°19'53"N 004°44'24"E EH625 52°29'10"N 004°45'15"E EH626 52°23'53"N 004°44'45"E EH630 52°26'02"N 004°44'58"E EH638 52°14'40"N 004°43'55"E
A	133 (145)	(53)	690 (700)	620 (630)	
B	139 (151)	(63)		780 (790)	
C	149 (161)	(76)		880 (890)	
D	162 (174)	(89)		890 (900)	
DL	162 (174)	(92)			



CEILING AND VISIBILITY MINIMA				* Circling procedures to and landing on RWY 18L and 36L is not permitted, except in case of an emergency.	BEARINGS ARE MAGNETIC DISTANCES IN NM ALTITUDES AND ELEVATIONS IN FEET
TAKE-OFF	DAY:	NA	NIGHT:	NA	
LANDING	DAY:	NA	NIGHT:	NA	