

NOTES:

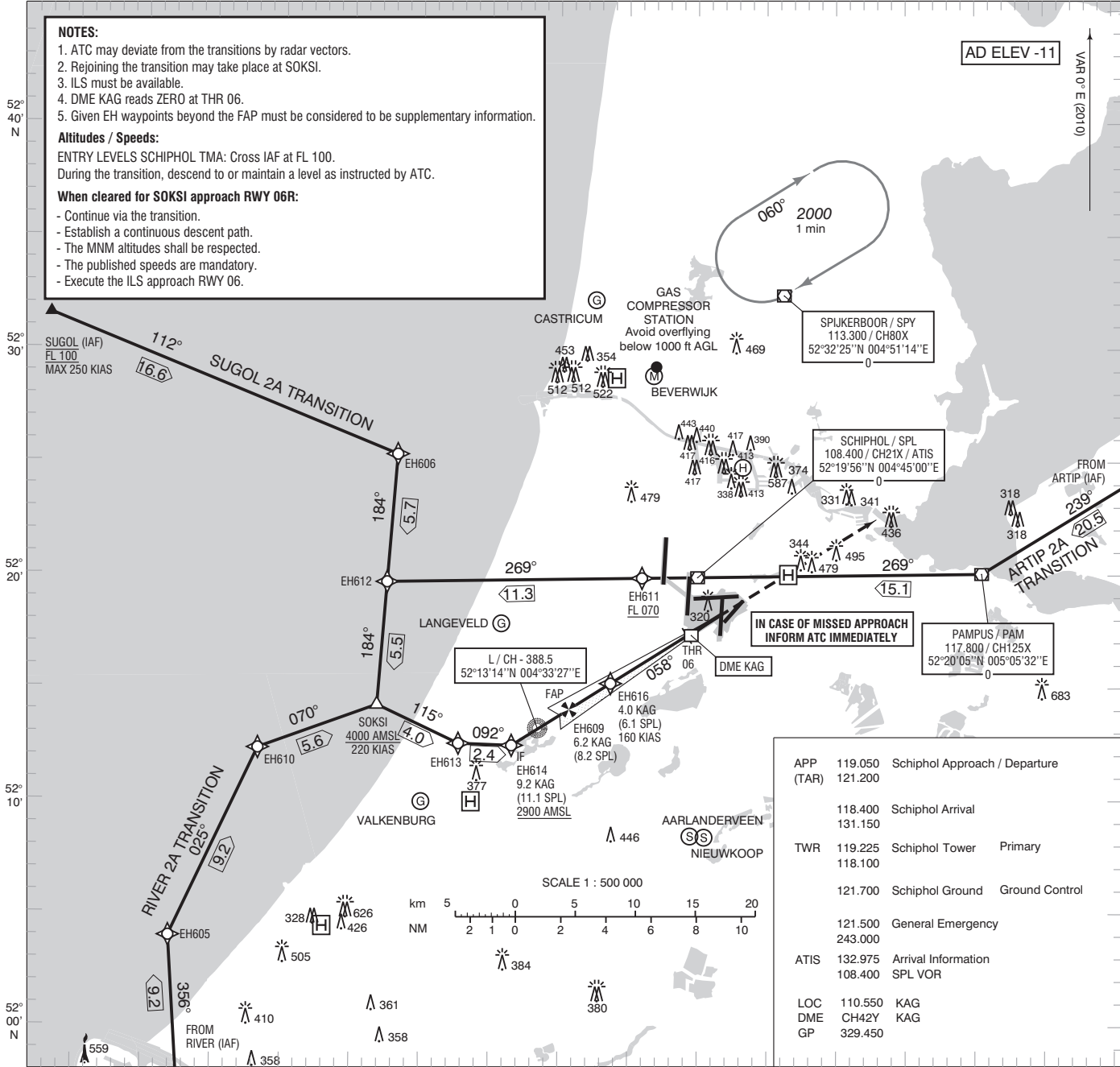
1. ATC may deviate from the transitions by radar vectors.
2. Rejoining the transition may take place at SOKSI.
3. ILS must be available.
4. DME KAG reads ZERO at THR 06.
5. Given EH waypoints beyond the FAP must be considered to be supplementary information.

Altitudes / Speeds:

ENTRY LEVELS SCHIPHOL TMA: Cross IAF at FL 100.
During the transition, descend to or maintain a level as instructed by ATC.

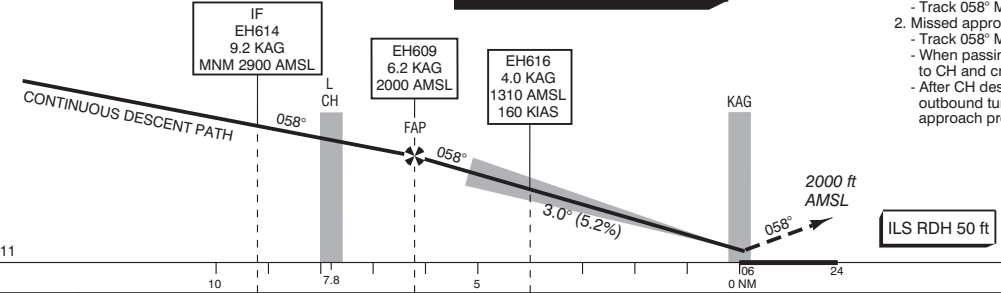
When cleared for SOKSI approach RWY 06R:

- Continue via the transition.
- Establish a continuous descent path.
- The MNM altitudes shall be respected.
- The published speeds are mandatory.
- Execute the ILS approach RWY 06.



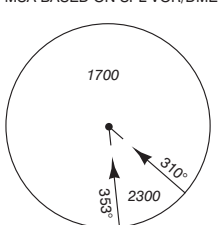
APP	119.050	Schiphol Approach / Departure
(TAR)	121.200	
	118.400	Schiphol Arrival
	131.150	
TWR	119.225	Schiphol Tower Primary
	118.100	
	121.700	Schiphol Ground Ground Control
	121.500	General Emergency
	243.000	
ATIS	132.975	Arrival Information
	108.400	SPL VOR
LOC	110.550	KAG
DME	CH42Y	KAG
GP	329.450	

**TRANSITION LEVEL BY ATC
TRANSITION ALTITUDE 3000 ft AMSL**



1. Missed approach:
 - Inform ATC immediately.
 - Track 058° MAG and climb to 2000 ft AMSL.
2. Missed approach in case of communication failure:
 - Track 058° MAG and climb to 3000 ft AMSL;
 - When passing 2000 ft AMSL start a right turn to CH and cross CH at 3000 ft AMSL;
 - After CH descend to 2000 ft AMSL in the outbound turn and execute the instrument approach procedure again.

DIST RELATED TO KAG DME		9.2	7.8	6.2	4.0	0 NM	24	
GS IN KT		100	120	140	160	180	200	220
VERTICAL SPEED		530 ft/min	635 ft/min	745 ft/min	850 ft/min	955 ft/min	1060 ft/min	1165 ft/min
OCA (OCH) ELEV THR 06: -10.9 ft								
ACFT CAT	CAT I	CAT II	CIRCLING*		* Circling procedures to and landing on RWY 18L and 36L is not permitted, except in case of an emergency.	THR 06 52°17'21"N 004°44'14"E EH605 52°03'59"N 004°06'58"E EH606 52°25'21"N 004°23'16"E EH609 52°14'04"N 004°35'45"E EH610 52°12'19"N 004°13'18"E EH611 52°19'53"N 004°40'58"E EH612 52°19'41"N 004°22'33"E EH613 52°12'33"N 004°27'45"E EH614 52°12'28"N 004°31'35"E EH616 52°15'13"N 004°38'43"E		
A	128 (138)	(50)	620 (630)					
B	138 (148)	(59)	780 (790)					
C	148 (158)	(73)	880 (890)					
D	161 (171)	(86)	890 (900)					
DL	164 (174)	(86)						
CEILING AND VISIBILITY MINIMA								
TAKE-OFF	DAY:	NA	NIGHT:	NA	BEARINGS ARE MAGNETIC DISTANCES IN NM ALTITUDES AND ELEVATIONS IN FEET			
LANDING	DAY:		NIGHT:					



CHANGE: representation OCA(OCH), editorial.