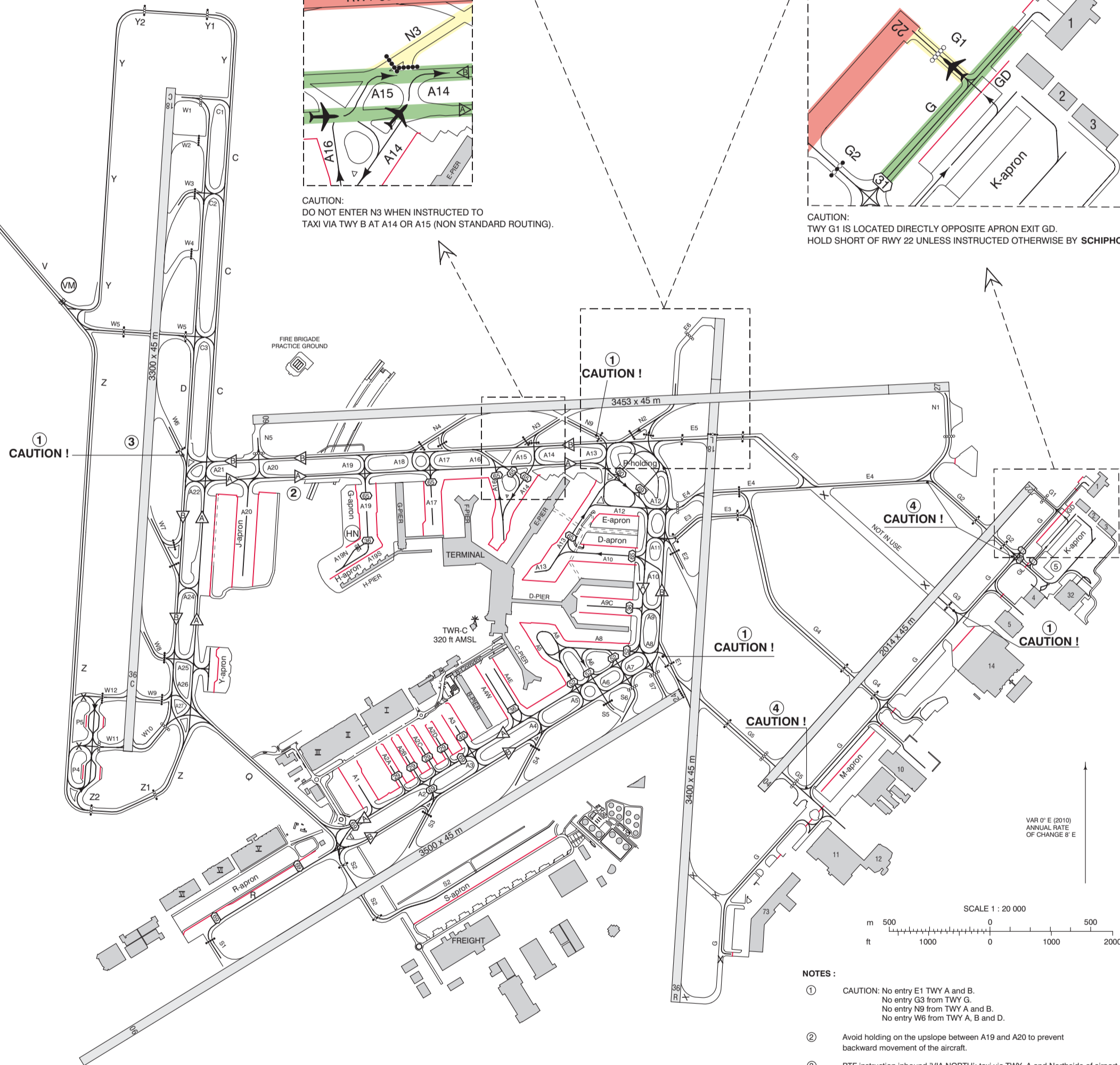
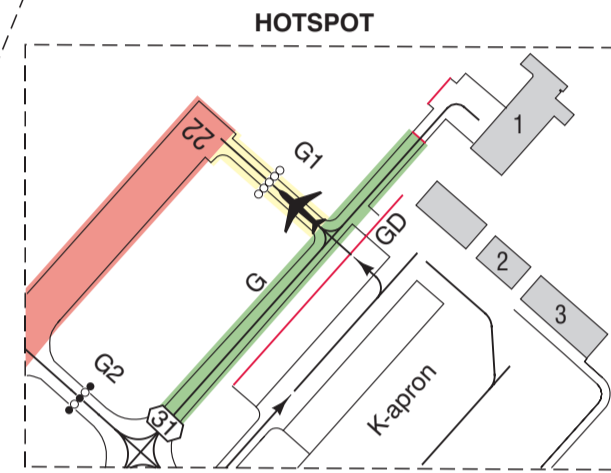
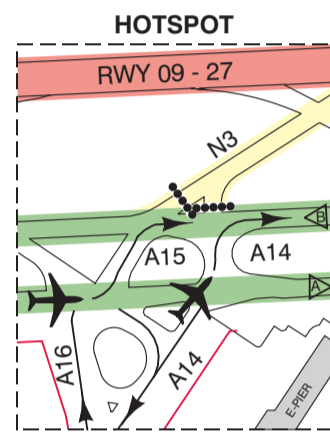
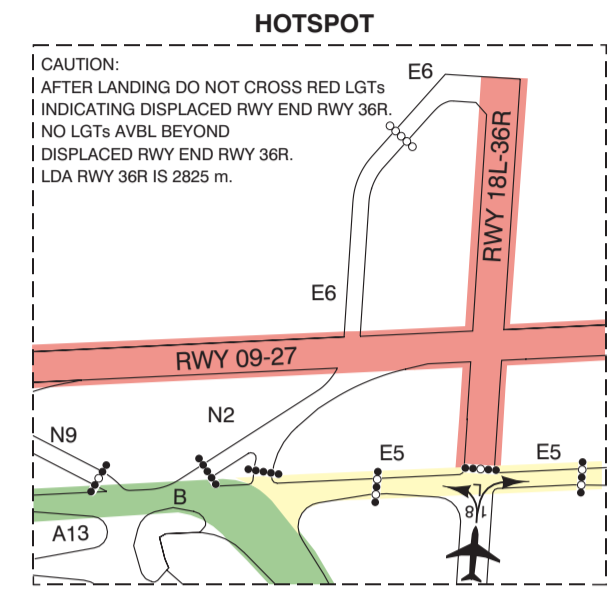
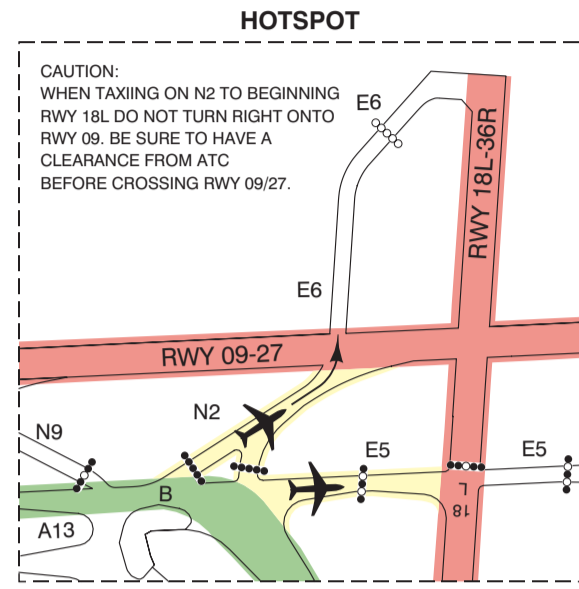
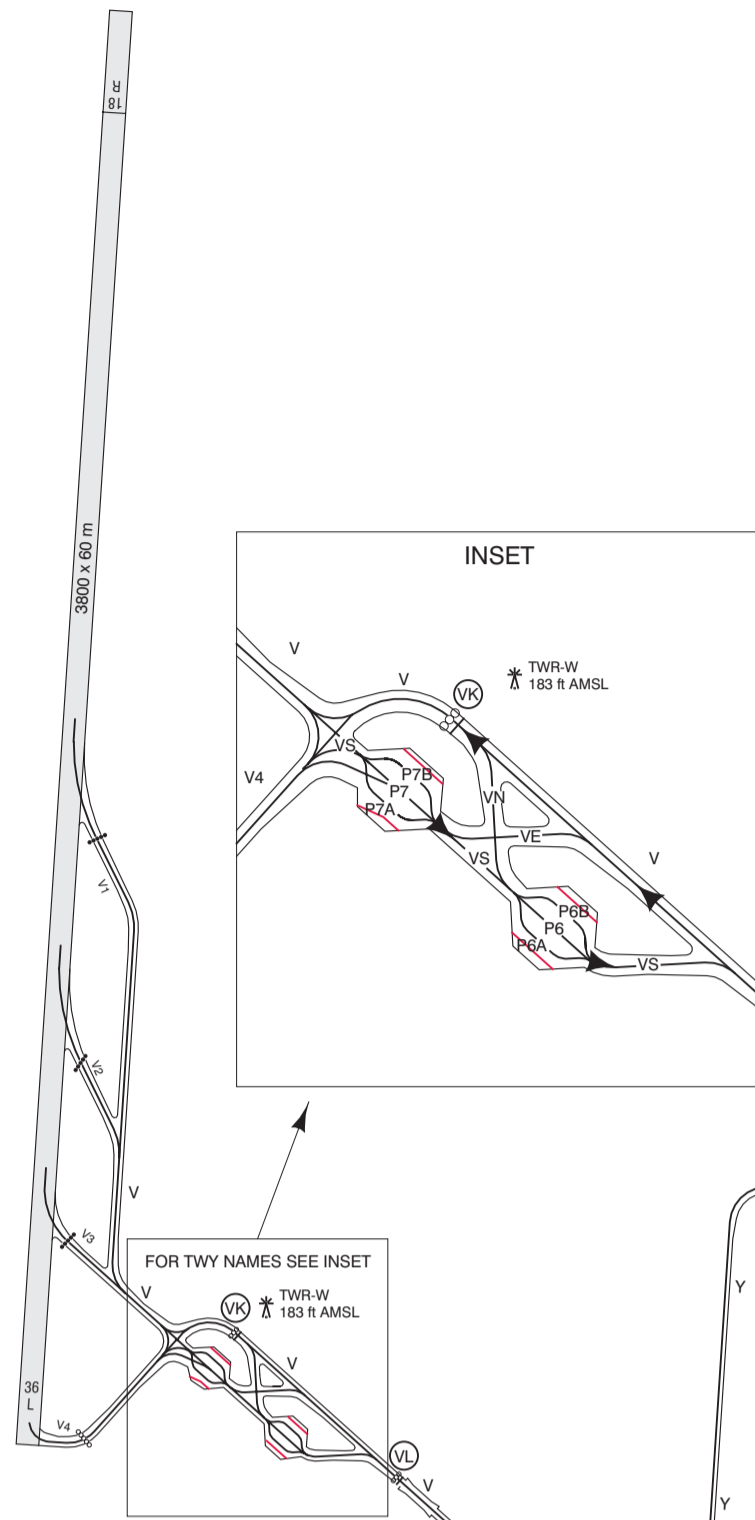


Aerodrome elevation
-11 ft AMSL

After landing contact Schiphol Ground:

RWY	CHANNEL
06/24	121.700
04/22	121.800
09/27	121.800
18C/36C	121.800
18R	121.900
36R	121.800



- NOTES:
- ① CAUTION: No entry E1 TWY A and B. No entry G3 from TWY G. No entry N8 from TWY A and B. No entry W6 from TWY A, B and D.
 - ② Avoid holding on the upslope between A19 and A20 to prevent backward movement of the aircraft.
 - ③ RTF instruction inbound 'VIA NORTH': taxi via TWY A and Northside of airport. RTF instruction outbound 'VIA NORTH': taxi via TWY B and Northside of airport. RTF instruction inbound 'VIA SOUTH': taxi via TWY Q. RTF instruction outbound 'VIA SOUTH': taxi via TWY A and Q.
 - ④ Oversteering required for aircraft with wingspan >= 36 m.
 - ⑤ K-apron is not controlled by ATC.

- LEGEND
- H24 FIXED STOP BAR
 - H24 SWITCHABLE STOP BAR
 - LOW VISIBILITY PROCEDURES SWITCHABLE STOP BAR
 - LOW VISIBILITY PROCEDURES FIXED STOP BAR
 - SWITCHABLE STOP BAR ONLY IN USE IN CASE OF LANDING OR DEPARTING RWY 18C/36C
 - ⊙ INTERMEDIATE HOLDING POSITION LIGHTED
 - ⊙ MAX WINGSPAN 29 m LIMITED ENTRY
 - ⊙ COMPULSORY TAXI ROUTING, UNLESS OTHERWISE INSTRUCTED BY ATC. ALL OTHER ROUTES MAY BE USED TWO-WAY ON ATC DISCRETION ONLY.
 - ATC SERVICE BDRY
 - 12 HANGAR NO. 12
 - III FREIGHT STATION NO. III
 - CROSSING VEHICLES
 - X NOT IN USE
- HOTSPOT
- RUNWAY
 - ENTRY / EXIT
 - TAXIWAY

Airbus A380 operational restrictions.
For details see AD 2.23 paragraph 7.
A380 taxi only with thrust on inner engines.

