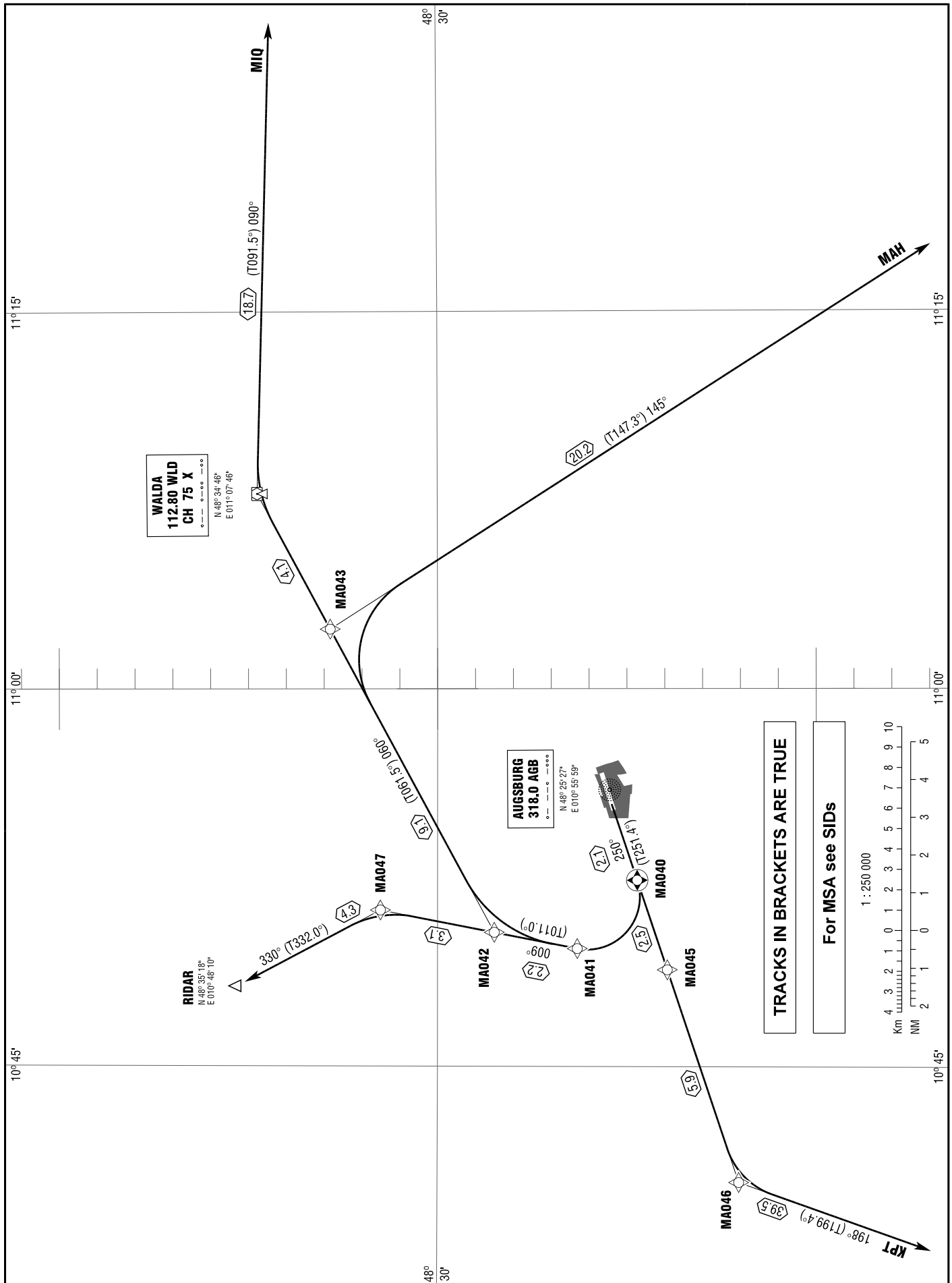


AUGSBURG
RWY 25

ATIS	124.575
TOWER	124.975
MÜNCHEN RADAR	128.250

TRANSITION
ALTITUDE 5000
VAR 2° E

GPS / FMS RNAV DEPARTURE
CHART - INSTRUMENT
(OVERLAY)



Correction: WP TEGBA withdrawn, procedure.