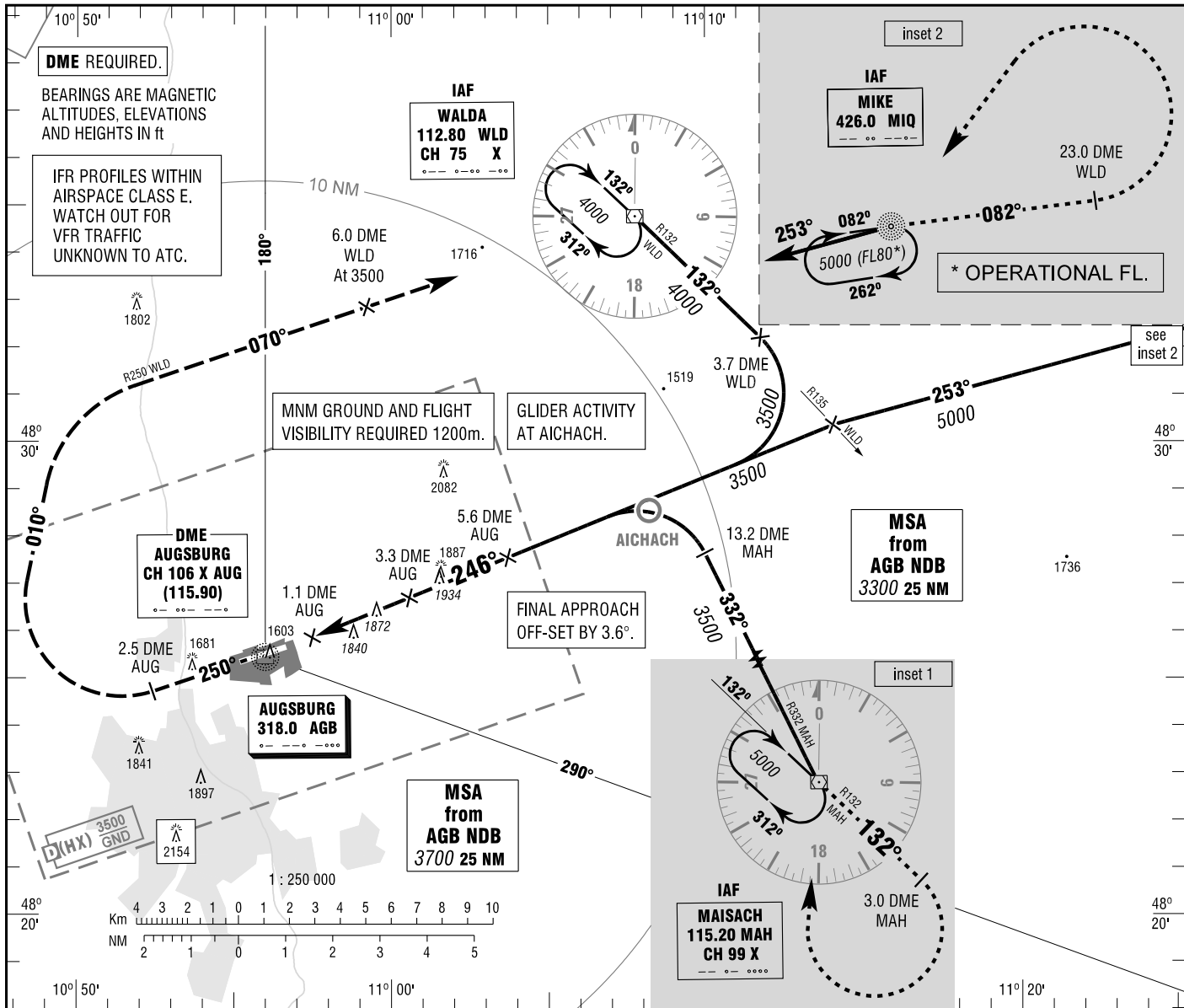


**AUGSBURG**  
NDB  
RWY 25

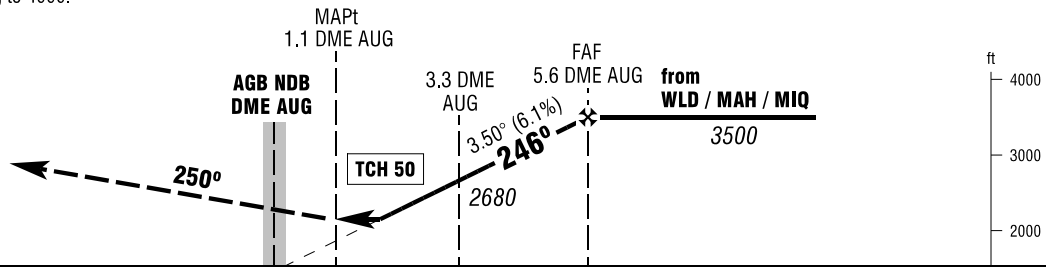
ATIS 124.575  
MÜNCHEN RADAR 128.250  
TOWER 124.975  
ELEV 1515  
OCH RELATED TO THR 25 ELEV 1515  
VAR 2° E

**INSTRUMENT**  
**APPROACH**  
**CHART - ICAO**



**MISSED APPROACH PROCEDURE**

On track 250° to 2.5 DME AUG, RT, on track 010° to intercept R250 inbound WLD climbing to 3500.  
At 6.0 DME WLD continue to WLD climbing to 4000.



1510 1515 PROFILE SCALE 1 : 250 000

OCA (OCH)	A	B	C
NDB-DME	2120 (610)	2120 (610)	2120 (610)
CIRCLING * OCH RELATED TO AD ELEV	2140 (620)	2170 (650)	2330 (820)

	2	3	4	5
DME AUG				
DIST THR	1.7	2.7	3.7	4.7
ALTITUDE	2200	2570	2940	3310

Timing not authorized for defining the MAPt.

GS	kt	80	100	120	140	160
3.3 DME AUG - MAPt (2.2 NM)	MIN:SEC	1:39	1:19	1:06	0:57	0:50
Rate of descent (6.1%)	ft / MIN	490	620	740	860	990

\* NORTH OF AERODROME ONLY. MNM GROUND AND FLIGHT VISIBILITY REQUIRED 3000M.

Correction: Obstacles revised, OCA(H) obstacles & values, note added.