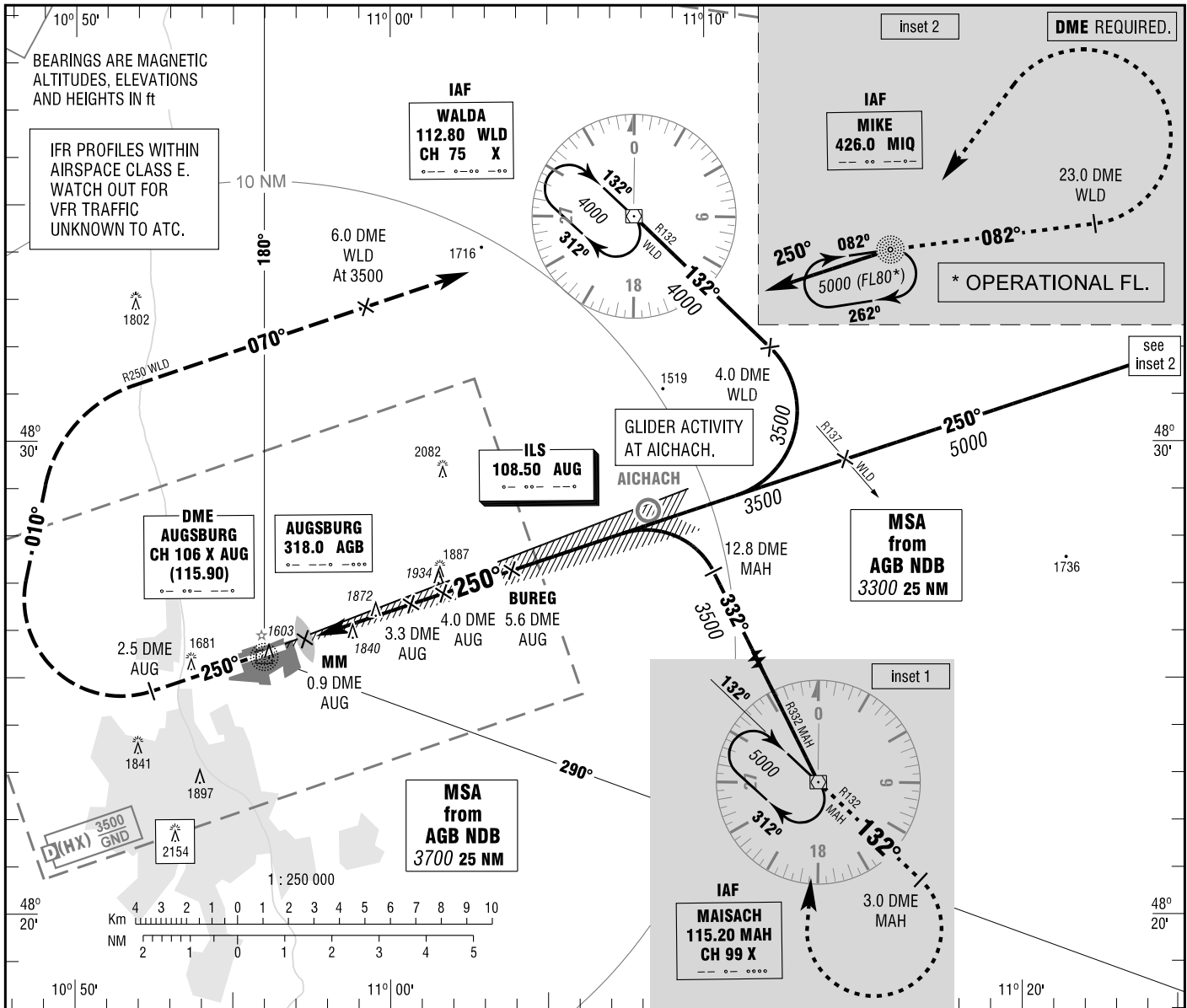


**INSTRUMENT  
APPROACH  
CHART - ICAO**

VAR 2° E  
ELEV 1515  
OCH RELATED TO  
THR 25 ELEV 1515

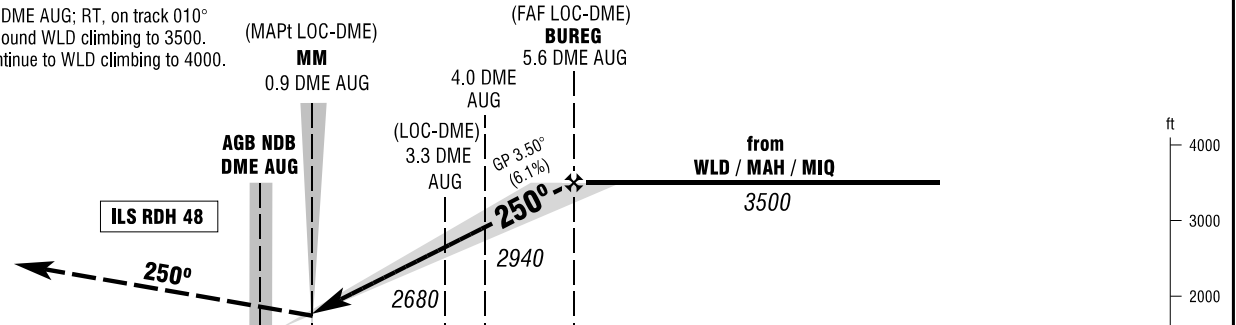
ATIS MÜNCHEN RADAR TOWER  
124.575  
128.250  
124.975

**AUGSBURG  
ILS or LOC  
RWY 25**



**MISSED APPROACH PROCEDURE**

On track 250° to 2.5 DME AUG; RT, on track 010°  
to intercept R250 inbound WLD climbing to 3500.  
At 6.0 DME WLD continue to WLD climbing to 4000.



1510 1515 PROFILE SCALE 1: 250 000

NM 6 5 4 3 2 1 0 1 2 3 4 5 6 7 8 9 10 11 12 13 14 NM

| OCA (OCH)                            | A             | B             | C             |
|--------------------------------------|---------------|---------------|---------------|
| ILS-DME CAT I                        | 1741<br>(226) | 1753<br>(238) | 1765<br>(250) |
| LOC-DME                              | 2120<br>(610) | 2120<br>(610) | 2120<br>(610) |
| CIRCLING *<br>OCH RELATED TO AD ELEV | 2140<br>(620) | 2170<br>(650) | 2330<br>(820) |

| DME AUG  | 2    | 3    | 4    | 5    |
|----------|------|------|------|------|
| DIST THR | 1.7  | 2.7  | 3.7  | 4.7  |
| ALTITUDE | 2200 | 2570 | 2940 | 3310 |

**LOC-DME:** Timing not authorized for defining the MAPt.

| GS                         | kt       | 80   | 100  | 120  | 140  | 160  |
|----------------------------|----------|------|------|------|------|------|
| 4.0 DME AUG - THR (3.7 NM) | MIN:SEC  | 2:47 | 2:13 | 1:51 | 1:35 | 1:23 |
| Rate of descent (6.1%)     | ft / MIN | 490  | 620  | 740  | 860  | 990  |

\*NORTH OF AERODROME ONLY. MNM GROUND AND FLIGHT VISIBILITY REQUIRED 3000m.

Correction: Obstacles revised, OCA(H) obstacles & values, note added.