

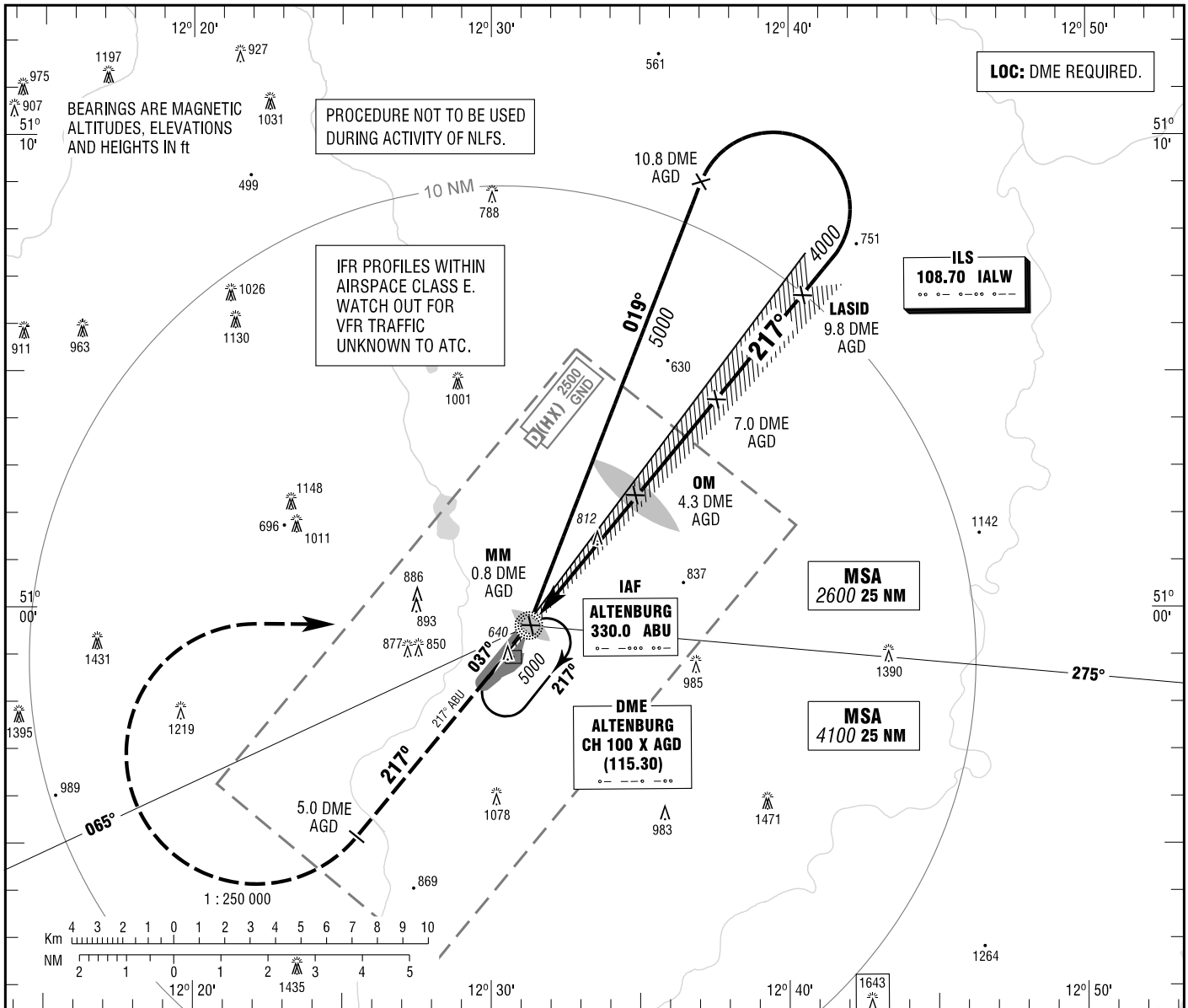
**INSTRUMENT
APPROACH
CHART - ICAO**

VAR 2° E

ELEV 640
OCH RELATED TO
THR 22 ELEV 605

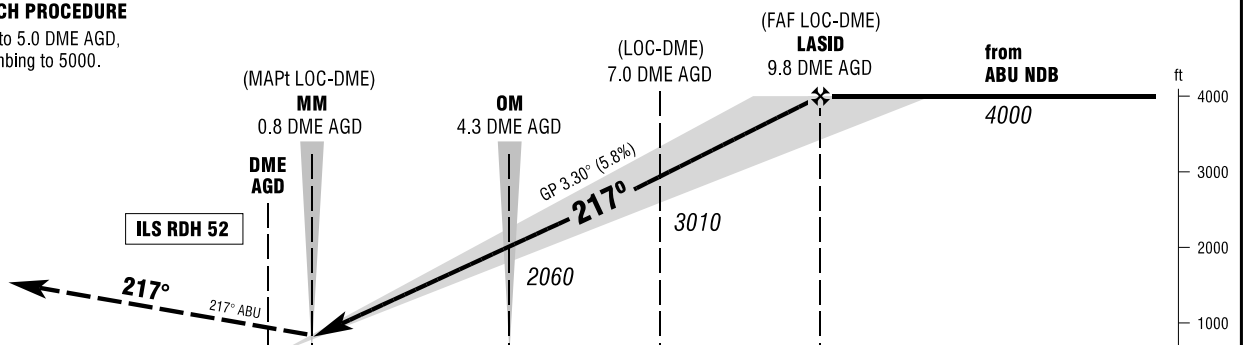
MÜNCHEN RADAR 126.175
ALTENBURG TOWER 123.575

**LEIPZIG-ALTENBURG AIRPORT
ILS or LOC
RWY 22**



MISSED APPROACH PROCEDURE

On track 217° ABU to 5.0 DME AGD,
RT to ABU NDB climbing to 5000.



NM 6 5 4 3 2 1 0 1 2 3 4 5 6 7 8 9 10 11 12 13 14 NM

PROFILE SCALE 1 : 250 000

OCA (OCH)	A	B	C	D
ILS CAT I	773 (168)	784 (179)	794 (189)	805 (200)
LOC-DME	1060 (460)	1060 (460)	1060 (460)	1060 (460)

DME AGD	2	3	4	5	6	7	8	9
DIST THR	1.7	2.7	3.7	4.7	5.7	6.7	7.7	8.7
ALTITUDE	1260	1610	1960	2310	2660	3010	3360	3710

LOC-DME: Timing not authorized for defining the MAPt.

GS	kt	80	100	120	140	160	180
THR - OM (4.0 NM)	MIN:SEC	3:00	2:24	2:00	1:43	1:30	1:20
Rate of descent (5.8%)	ft / MIN	470	580	700	820	930	1050

Correction: Obstacles revised, OCA(H) obstacles & values, note added.